

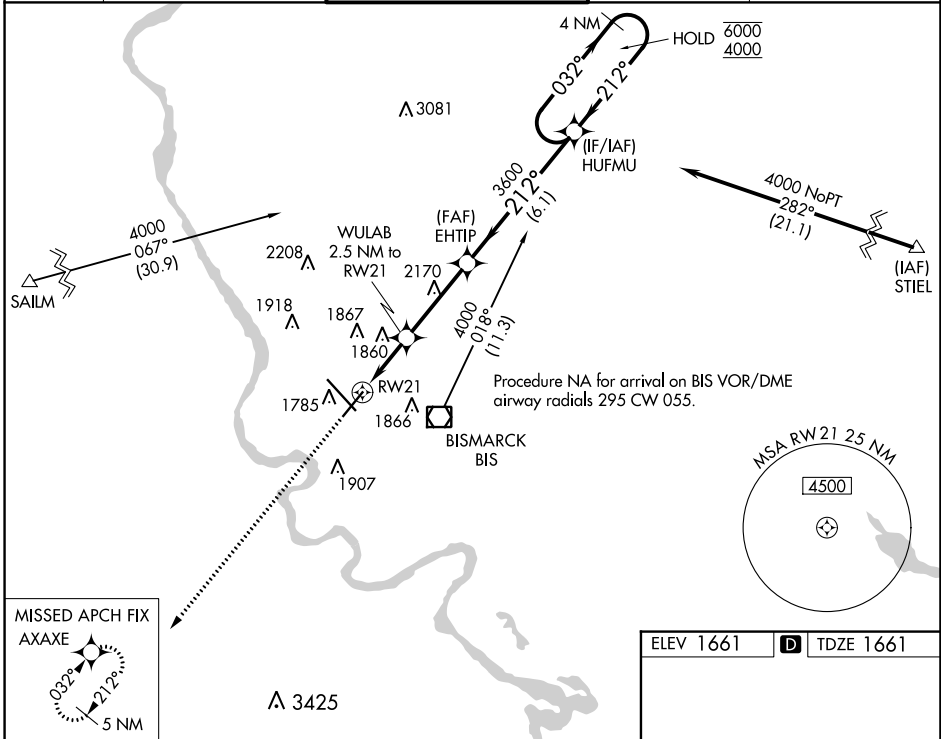
WAAS CH 53520 W21A	APP CRS 212°	Rwy ldg TDZE Apt Elev	6600 1661 1661
---------------------------------	------------------------	-----------------------------	---

RNAV (GPS) RWY 21

BISMARCK MUNI (BIS)

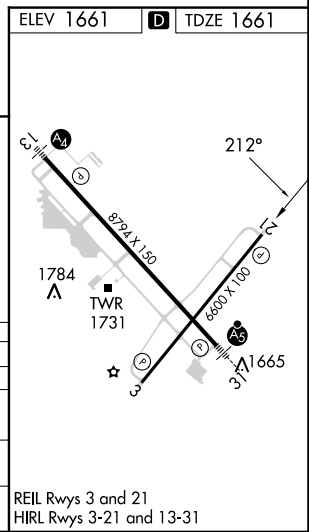
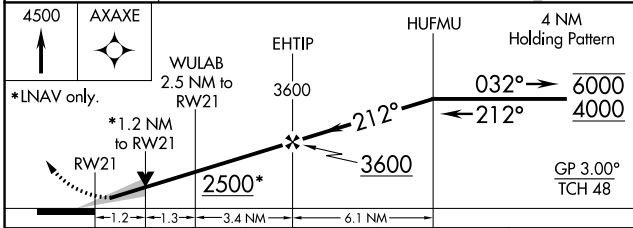
RNP APCH.		MISSED APPROACH: Climb to 4500 direct AXAXE and hold.	
For uncompensated Baro-VNAV systems, LNAV/VNAV NA below -22°C or above 54°C.			

ATIS 119.35	BISMARCK APP CON * 126.3 298.9	BISMARCK TOWER * 118.3 (CTAF) 0 257.8	GND CON 121.9	UNICOM 122.95
-----------------------	--	---	-------------------------	-------------------------



NC-1, 28 NOV 2024 to 26 DEC 2024

NC-1, 28 NOV 2024 to 26 DEC 2024



CATEGORY	A	B	C	D
LPV DA		1861-3/4	200 (200-3/4)	
LNAV/VNAV DA		1970-7/8	309 (400-7/8)	
LNAV MDA	2100-1	439 (500-1)	2100-1 1/4	439 (500-1 1/4)
CIRCLING	2200-1	539 (600-1)	2460-2 1/4 799 (800-2 1/4)	2460-2 1/2 799 (800-2 1/2)