

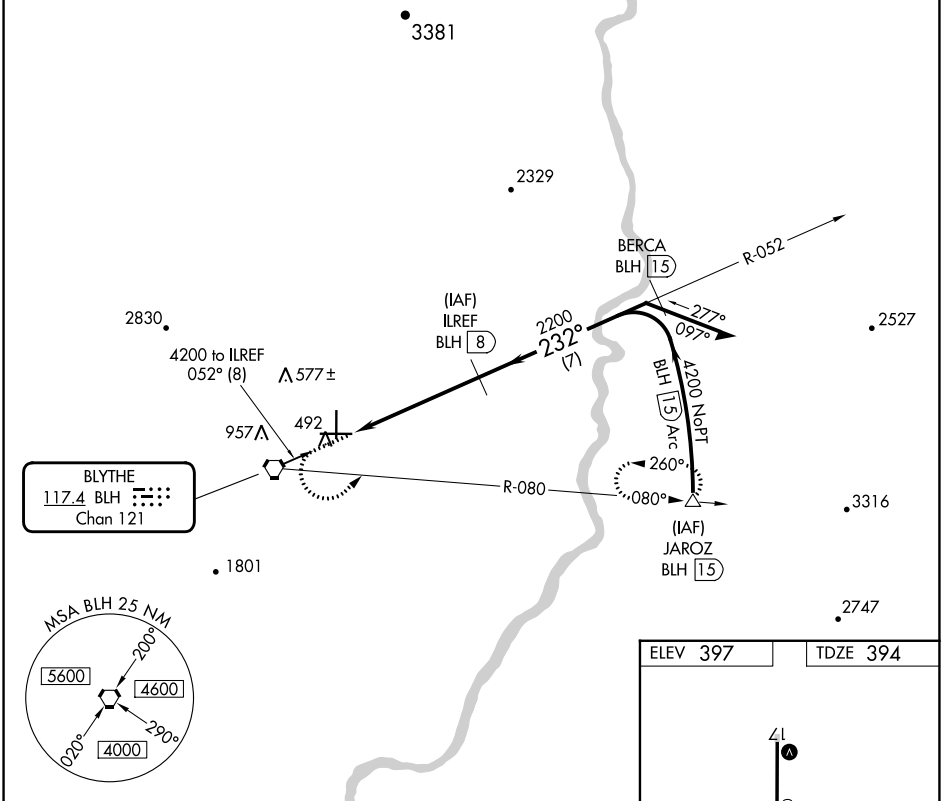
VORTAC BLH <b>117.4</b> Chan <b>121</b>	APP CRS <b>232°</b>	Rwy Idg TDZE <b>394</b> Apt Elev <b>397</b>
---	------------------------	---

# VOR/DME RWY 26

BLYTHE (BLH)

MISSED APPROACH: Climb to 1200 then climbing left turn to 4600 via BLH VORTAC R-080 to JAROZ/1.5 DME and hold.

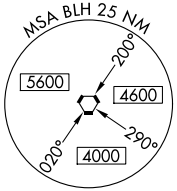
ASOS <b>120.175</b>	LOS ANGELES CENTER <b>128.15 285.6</b>	UNICOM <b>122.8 (CTAF)</b>
------------------------	---	-------------------------------



SW-3, 28 NOV 2024 to 26 DEC 2024

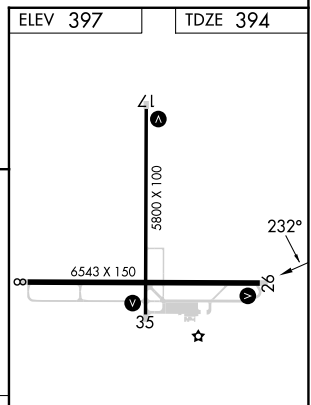
SW-3, 28 NOV 2024 to 26 DEC 2024

**BLYTHE**  
117.4 BLH  
Chan 121



1200	4600	JAROZ	ILREF BLH (8)	Remain within 10 NM
↑	BLH R-080	△		

VGSI and descent angle not coincident (VGSI Angle 3.00/TCH 42).



CATEGORY	A	B	C	D
S-26	760-1 366 (400-1)			760-1¼ 366 (400-1¼)
CIRCLING	840-1 443 (500-1)	860-1 463 (500-1)	960-1½ 563 (600-1½)	1260-2¾ 863 (900-2¾)

MIRL Rwy 8-26 and 17-35