

WAAS CH <b>78318</b> <b>W36A</b>	APP CRS <b>001°</b>	Rwy ldg <b>11602</b> TDZE <b>254</b> Apt Elev <b>254</b>
--	------------------------	--

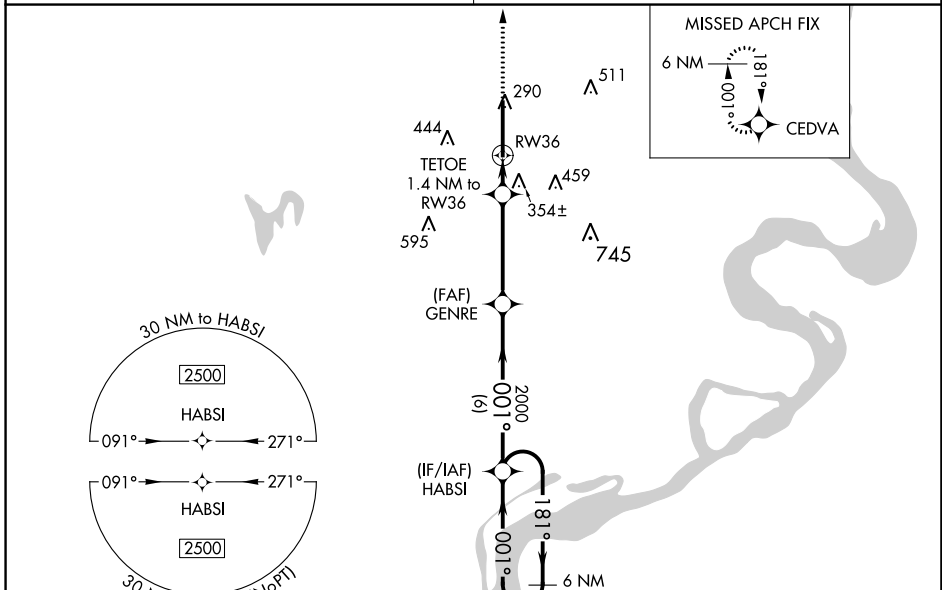
# RNAV (GPS) RWY 36

ARKANSAS INTL (BYH)

**⚠ NA** Inop table does not apply. Baro-VNAV NA when using Blytheville Muni altimeter setting. For uncompensated Baro-VNAV systems, LNAV/VNAV NA below -1.5°C (5°F) or above 54°C (130°F). Circling NA east of Rwy 18-36. DME/DME RNP-0.3 NA. Obtain local altimeter setting on CTAF; when not received, use Blytheville Muni altimeter setting and increase all DA 14 feet and all MDA 20 feet. Increase LNAV/VNAV all Cats and LNAV Cat C/D visibility 1/8 mile.

MISSED APPROACH: Climb to 2500 direct CEDVA and hold.

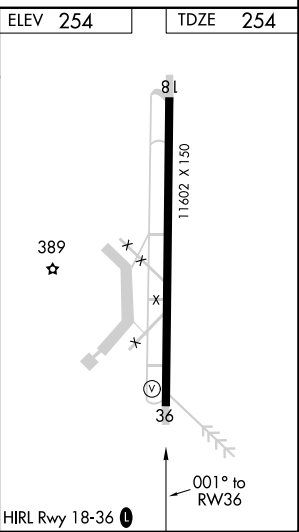
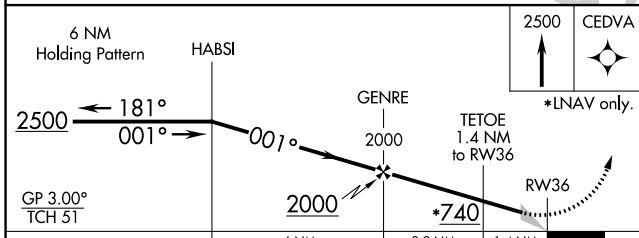
MEMPHIS CENTER <b>134.65 316.15</b>	UNICOM <b>122.7 (CTAF) 0</b>
--	---------------------------------



SC-1, 28 NOV 2024 to 26 DEC 2024

SC-1, 28 NOV 2024 to 26 DEC 2024

ELEV <b>254</b>	TDZE <b>254</b>
-----------------	-----------------



CATEGORY	A	B	C	D
LPV DA		454-3/4	200 (200-3/4)	
LNAV/VNAV DA		537-1	283 (300-1)	
LNAV MDA		620-1	366 (400-1)	
<b>CIRCLING</b>	700-1 446 (500-1)	720-1 466 (500-1)	800-1 1/2 546 (600-1 1/2)	820-2 566 (600-2)