

BOISE, IDAHO

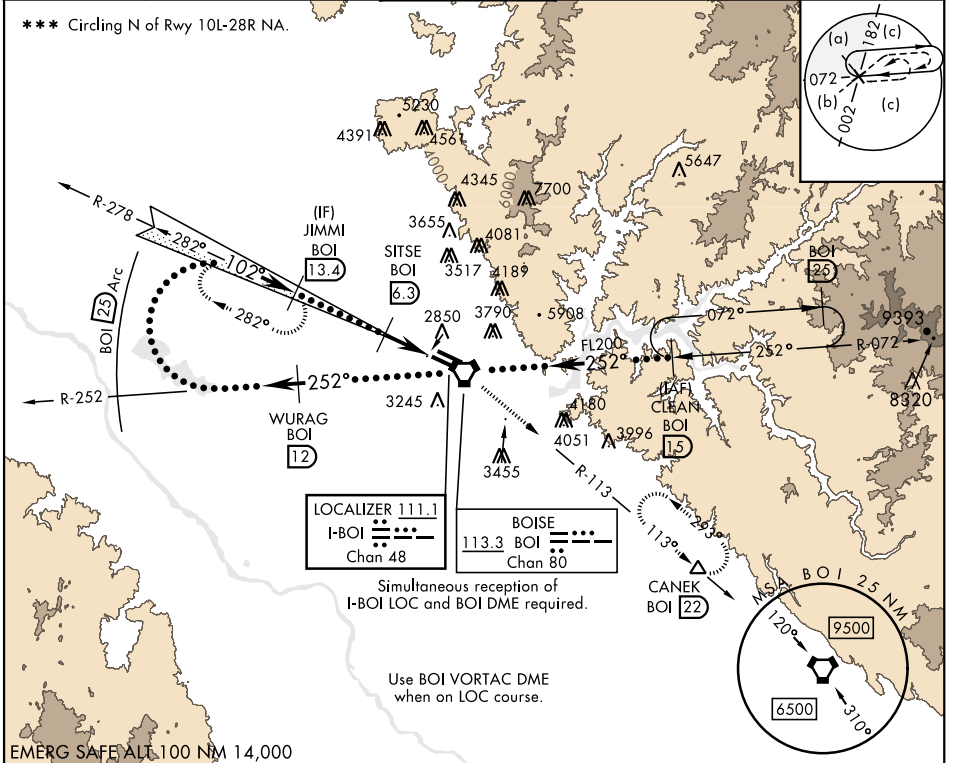
# HI-ILS Z or LOC Z RWY 10R

LOC I-BOI <b>111.1</b>	APCH CRS <b>102°</b>	Rwy Ldg TDZE Arprt Elev <b>9763</b> <b>2836</b> <b>2872</b>	AL-57 [USAF]	BOISE AIR TERMINAL (GOWEN FLD)	(KBOI)
---------------------------	-------------------------	--	--------------	--------------------------------	--------

DME required. ALSIF-2

▼ \* When ALS inop, increase RVR to 40 and vis to 3/4 mile.
\*\* When ALS inop, increase RVR to 55 and vis to 1 mile.
MISSED APPROACH: Climb to 7300 on BOI VORTAC R-113 to CANEK/BOI 22 DME and hold.

ATIS <b>123.9 290.4</b>	BIG SKY APP CON <b>119.6 269.4</b>	BOISE TOWER <b>118.1 257.8</b>	GND CON <b>121.7 348.6</b>	CLNC DEL <b>125.9 323.2</b>	ASOS
----------------------------	---------------------------------------	-----------------------------------	-------------------------------	--------------------------------	------



NW-1, 28 NOV 2024 to 26 DEC 2024

EMERG SAFE ALL 100 NM 14,000

7300	BOI R-113	CANEK	VGSI and ILS glidepath not coincident (VGSI Angle 3.00/TCH 64).			ELEV 2872	TDZE 2836
Right at 12,000 remain within 25 NM of BOI VORTAC	WURAG BOI 12	JIMMI BOI 13.4	SITSE BOI 6.3	BOI 3.4	AVVVU BOI 2.7	CLEAN BOI 15	
GS 3.00° TCH 54	FL200	FL200	FL200	FL200	FL200		
CATEGORY	C	D	E				
S-ILS 10R **	3036/18	200	(200-1/2)				
S-LOC 10R **	3200/35	364	(400-3/8)				
***	3640-2 1/4 768 (800-2 1/4)	3820-3 948 (1000-3)	3880-3 1008 (1100-3)				
CIRCLING					TDZL/CL Rwy 10R-28L HIRL Rwy 10L-28R, 10R-28L REIL Rwy 10L		

BOISE, IDAHO 43°34'N-116°13'W BOISE AIR TERMINAL (GOWEN FLD) (KBOI)

# HI-ILS Z or LOC Z RWY 10R