

LOC/DME I-BOI 111.1 Chan 48	APP CRS 102°	Rwy Idg 9763 TDZE 2836 Apt Elev 2872
--	------------------------	--

ILS Y RWY 10R (CAT II & III)

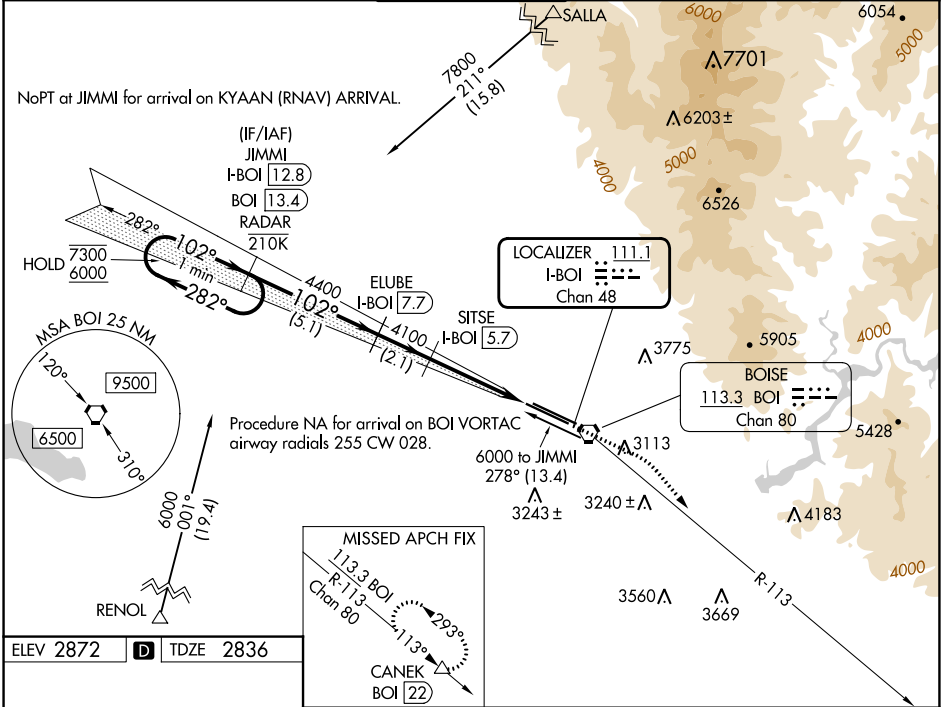
BOISE AIR TRML/GOWEN FLD (BOI)

DME required. RNAV 1 - GPS. From SALLA and RENOL.

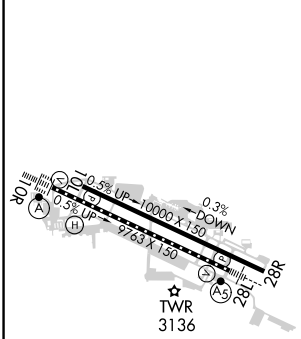
ALSIF-2

MISSED APPROACH: Climb to 3300 then climbing right turn to 7300 on BOI VORTAC R-113 to CANEK/BOI VORTAC 22 DME and hold.

D-ATIS 123.9 290.4	BIG SKY APP CON 119.6 269.4	BOISE TOWER 118.1 257.8	GND CON 121.7 348.6	CLNC DEL 125.9 323.2
------------------------------	---------------------------------------	-----------------------------------	-------------------------------	--------------------------------



ELEV 2872	D	TDZE 2836
-----------	---	-----------



VGSi and ILS glidepath not coincident (VGSi Angle 3.00/TCH 64).			
3300	7300	CANEK	△
↑	↷	BOI R-113	
Use I-BOI DME when on the localizer course.			

CATEGORY	A	B	C	D
S-ILS 10R	CAT II RA 124/12 100 DA 2936			
S-ILS 10R	CAT III RVR 03			

CATEGORY II & III ILS - SPECIAL AIRCREW & AIRCRAFT CERTIFICATION REQUIRED

NW-1, 28 NOV 2024 to 26 DEC 2024

NW-1, 28 NOV 2024 to 26 DEC 2024