

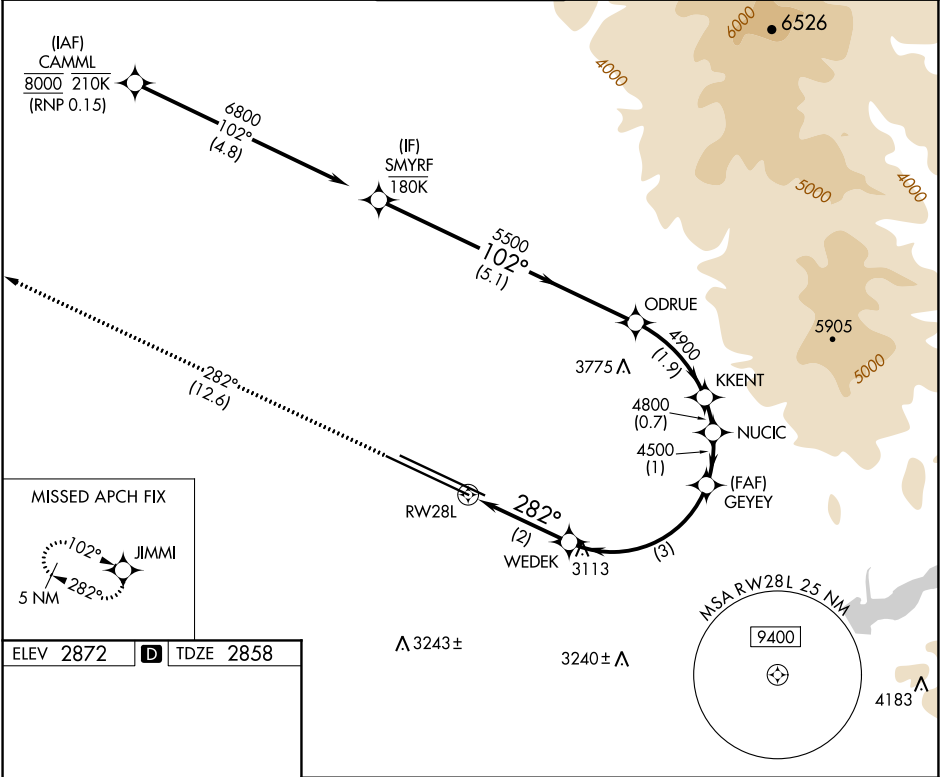
APP CRS	Rwy Idg	9763
282°	TDZE	2858
	Apt Elev	2872

RNAV (RNP) X RWY 28L

BOISE AIR TRML/GOWEN FLD (BOI)

RNP AR APCH - GPS.	MALSR	MISSED APPROACH: Climb to 6000 on track 282° to JIMMI and hold, continue climb-in-hold to 6000.
▼ For uncompensated Baro-VNAV systems, procedure NA below -14°C or above 54°C.		

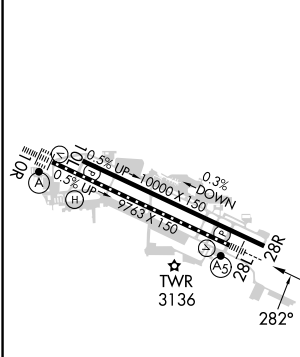
D-ATIS 123.9 290.4	BIG SKY APP CON 119.6 269.4	BOISE TOWER 118.1 257.8	GND CON 121.7 348.6	CLNC DEL 125.9 323.2
------------------------------	---------------------------------------	-----------------------------------	-------------------------------	--------------------------------



NW-1, 28 NOV 2024 to 26 DEC 2024

NW-1, 28 NOV 2024 to 26 DEC 2024

ELEV 2872	D	TDZE 2858
-----------	----------	-----------



6000	JIMMI	VGSi and RNAV glidepath not coincident (VGSi Angle 3.00/TCH 50).				SMYRF	
tr 282°		WEDEK	GEYEW	NUCIC	ODRUE	SMYRF	
		3545	4500	4800	4900	5500	
			4500			6800	
		2 NM	3 NM	1 NM	0.7 NM	1.9 NM	5.1 NM
CATEGORY	A	B	C	D			
RNP 0.15 DA	3229/35 371 (400- $\frac{1}{2}$)						

REL Rwy 10L
TDZ/CL Rws 10R and 28L
HIRL Rws 10L-28R and 10R-28L

AUTHORIZATION REQUIRED