

APP CRS	Rwy Idg	10000
102°	TDZE	2844
	Apt Elev	2872

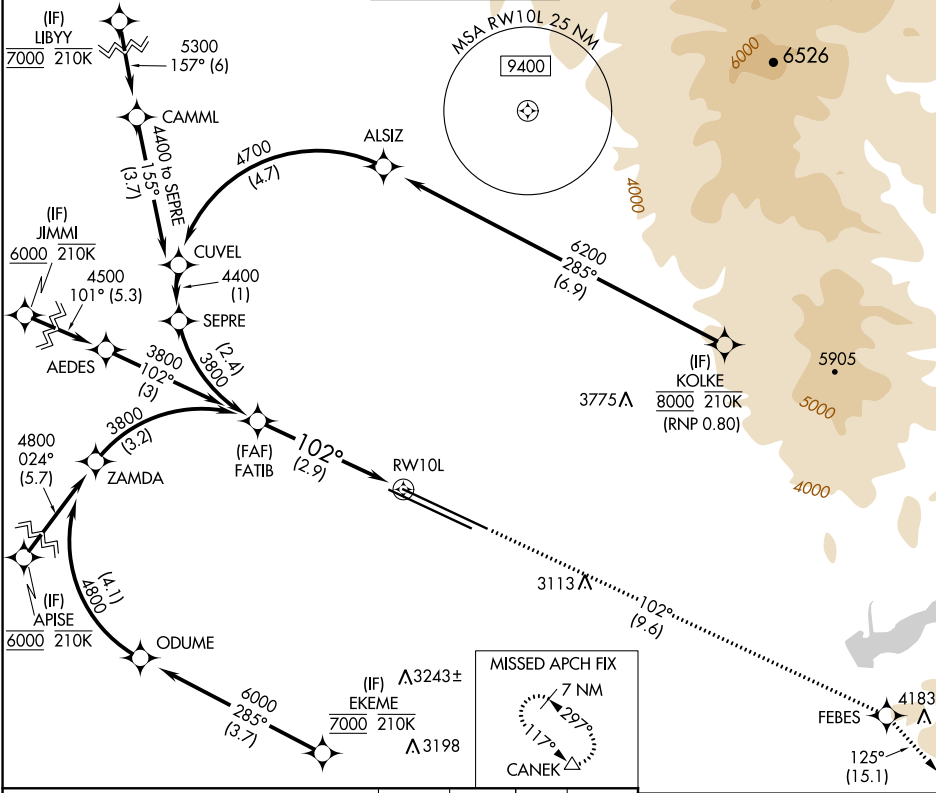
RNAV (RNP) Z RWY 10L

BOISE AIR TRML/GOWEN FLD (BOI)

RNP AR APCH - GPS.
 ▼ For uncompensated Baro-VNAV systems, procedure NA below -1.4°C or above 54°C.

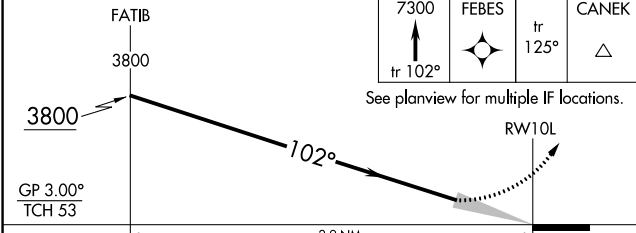
MISSED APPROACH: Climb to 7300 on track 102° to FEBES and on track 125° to CANEK and hold.

D-ATIS	BIG SKY APP CON	BOISE TOWER	GND CON	CLNC DEL
123.9 290.4	119.6 269.4	118.1 257.8	121.7 348.6	125.9 323.2



NW-1, 28 NOV 2024 to 26 DEC 2024

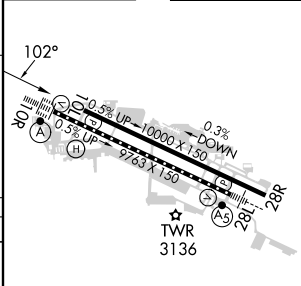
NW-1, 28 NOV 2024 to 26 DEC 2024



CATEGORY	A	B	C	D
RNP 0.30 DA	3237-1 3/8 393 (400-1 1/8)			

AUTHORIZATION REQUIRED

ELEV 2872	D	TDZE 2844
-----------	----------	-----------



REIL Rwy 10L
 TDZ/CL Rwy 10R and 28L
 HIRL Rwy 10L-28R and 10R-28L