

# RNAV (RNP) Z RWY 10R

BOISE AIR TRML/GOWEN FLD (BOI)

APP CRS	Rwy Idg	<b>9763</b>
<b>102°</b>	TDZE	<b>2836</b>
	Apt Elev	<b>2872</b>

RNP AR APCH - GPS.

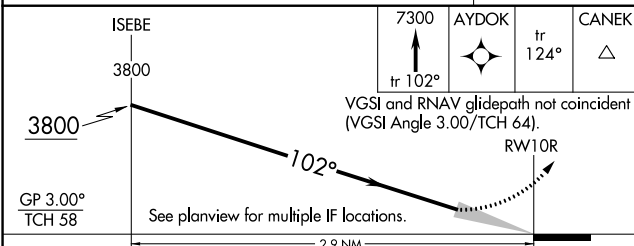
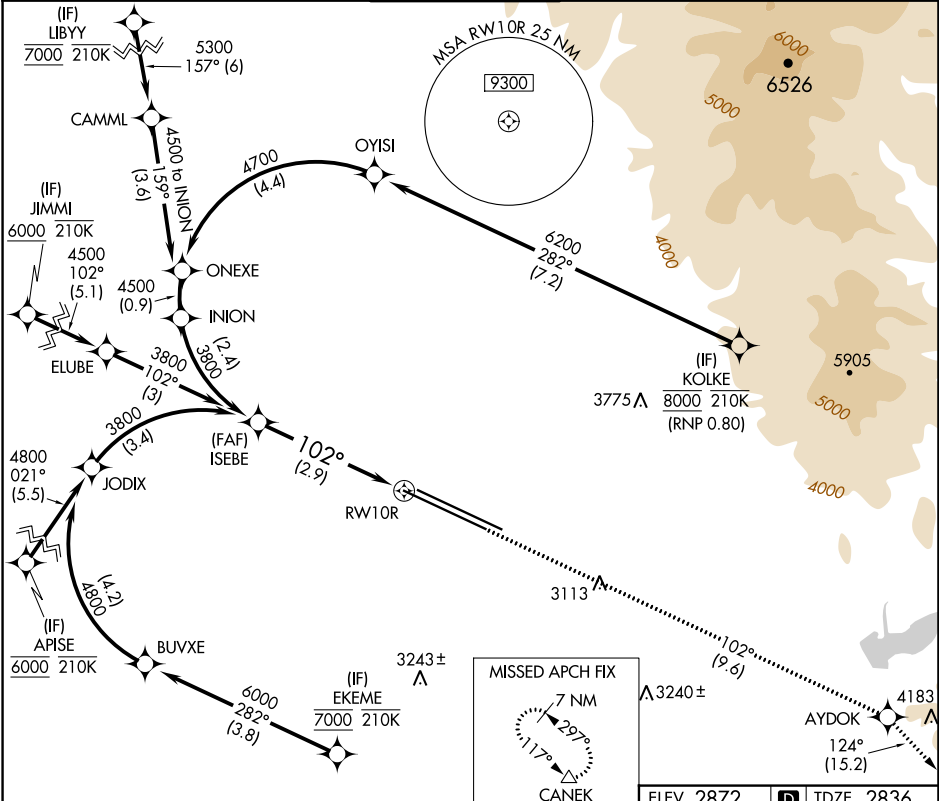
ALSF-2

For uncompensated Baro-VNAV systems, procedure NA below -14°C or above 54°C.



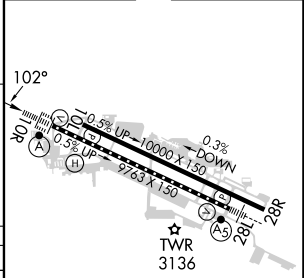
MISSED APPROACH: Climb to 7300 on track 102° to AYDOK and on track 124° to CANEK and hold.

D-ATIS	BIG SKY APP CON	BOISE TOWER	GND CON	CLNC DEL
<b>123.9 290.4</b>	<b>119.6 269.4</b>	<b>118.1 257.8</b>	<b>121.7 348.6</b>	<b>125.9 323.2</b>



ELEV 2872	<b>D</b> TDZE 2836
-----------	--------------------

CATEGORY	A	B	C	D
RNP 0.30 DA	3219/35		383 (400-5%)	



REIL Rwy 10L  
 TDZ/CL Rwy 10R and 28L  
 HIRL Rwy 10L-28R and 10R-28L

## AUTHORIZATION REQUIRED

NW-1, 28 NOV 2024 to 26 DEC 2024

NW-1, 28 NOV 2024 to 26 DEC 2024