

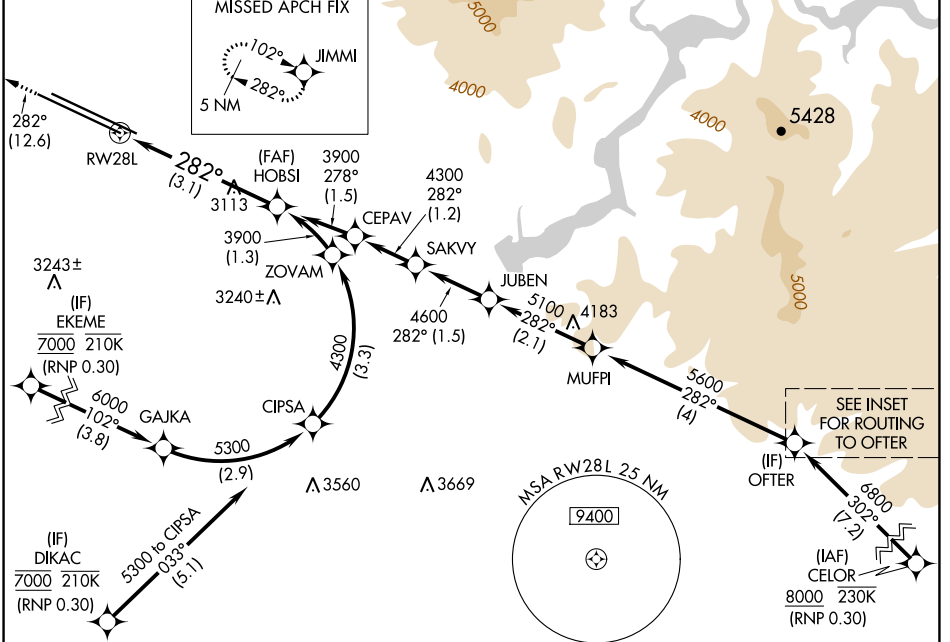
APP CRS	Rwy Idg	9763
282°	TDZE	2858
	Apt Elev	2872

RNAV (RNP) Z RWY 28L

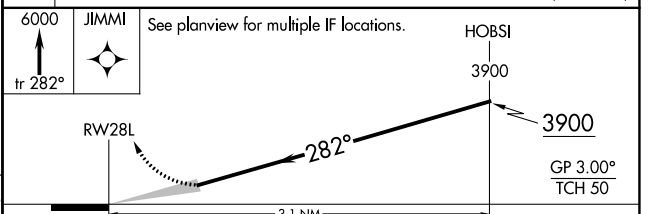
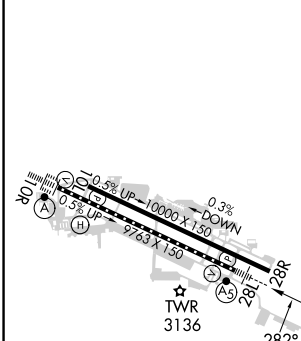
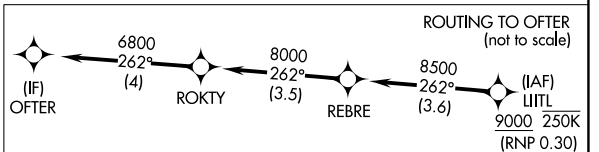
BOISE AIR TRML/GOWEN FLD (BOI)

RNP AR APCH - GPS.	MALSR	MISSED APPROACH: Climb to 6000 on track 282° to JIMMI and hold, continue climb-in-hold to 6000.
▼ For uncompensated Baro-VNAV systems, procedure NA below -14°C or above 54°C. For inop ALS, increase RNP 0.11 all Cats visibility to RVR 5500.		

D-ATIS 123.9 290.4	BIG SKY APP CON 119.6 269.4	BOISE TOWER 118.1 257.8	GND CON 121.7 348.6	CLNC DEL 125.9 323.2
------------------------------	---------------------------------------	-----------------------------------	-------------------------------	--------------------------------



ELEV 2872	D	TDZE 2858
-----------	----------	-----------



CATEGORY	A	B	C	D
RNP 0.11 DA		3220/35	362 (400- $\frac{5}{8}$)	
RNP 0.30 DA		3315/45	457 (500- $\frac{7}{8}$)	

AUTHORIZATION REQUIRED

NW-1, 28 NOV 2024 to 26 DEC 2024

NW-1, 28 NOV 2024 to 26 DEC 2024