

VORTAC BOI 113.3 Chan 80	APP CRS 101°	Rwy Idg TDZE Apt Elev	10000 2844 2872
--	------------------------	-----------------------------	--

VOR or TACAN RWY 10L

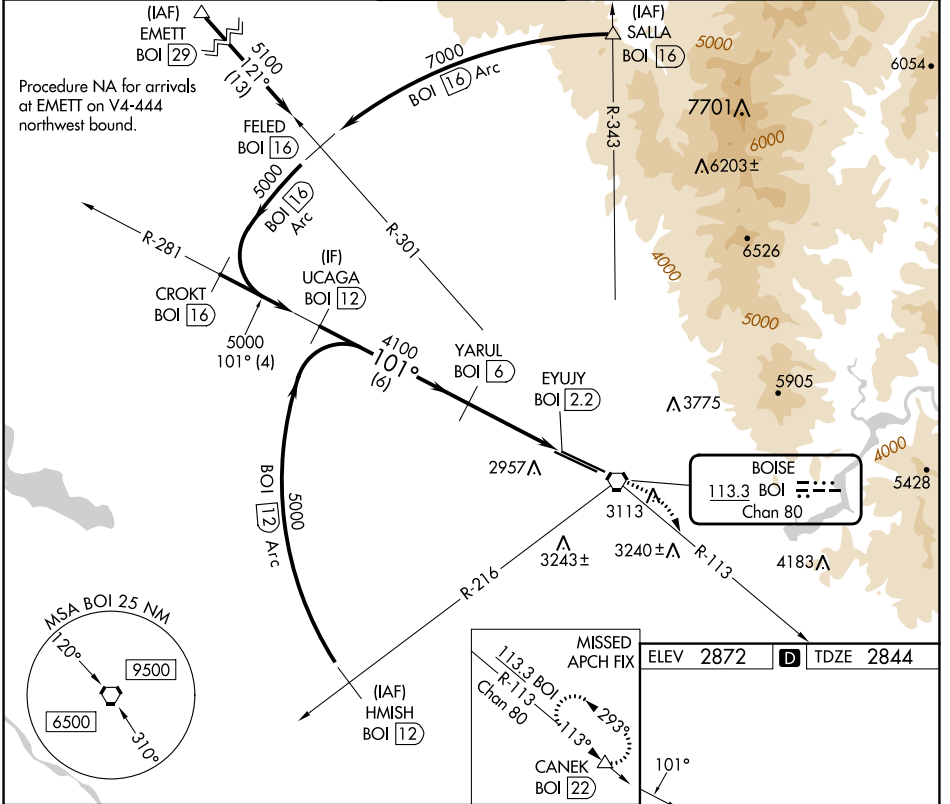
BOISE AIR TRML/GOWEN FLD (BOI)

DME required.

Procedure NA for arrivals at EMETT on V4-444 northwest bound.

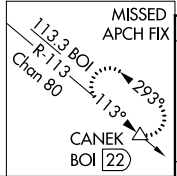
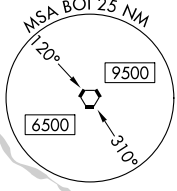
MISSED APPROACH: Climb to 3400 then climbing right turn to 7300 on BOI VORTAC R-113 to CANEK/BOI VORTAC 22 DME and hold.

D-ATIS 123.9 290.4	BIG SKY APP CON 119.6 269.4	BOISE TOWER 118.1 257.8	GND CON 121.7 348.6	CLNC DEL 125.9 323.2
------------------------------	---------------------------------------	-----------------------------------	-------------------------------	--------------------------------

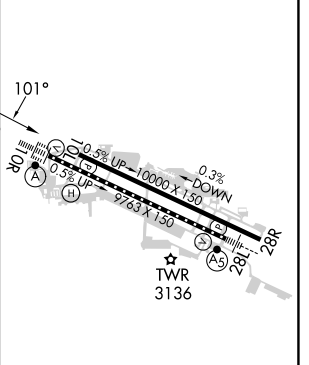
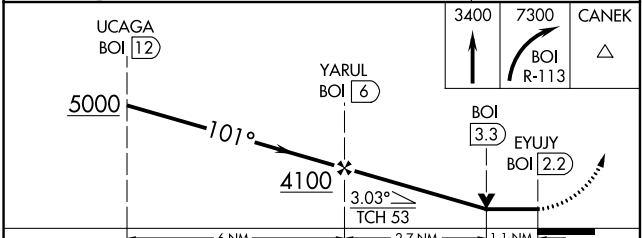


NW-1, 28 NOV 2024 to 26 DEC 2024

NW-1, 28 NOV 2024 to 26 DEC 2024



ELEV 2872	TDZE 2844
-----------	-----------



CATEGORY	A	B	C	D	E
S-10L	3240-1	396 (400-1)	3240-1 1/8	396 (400-1 1/8)	
C CIRCLING	3440-1	568 (600-1)	3640-2 1/4	3820-3	3880-3
			768 (800-2 1/4)	948 (1000-3)	1008 (1100-3)

REIL Rwy 10L
TDZ/CL Rws 10R and 28L
HIRL Rws 10L-28R and 10R-28L