

BOISE, IDAHO

AL-57 (FAA)

24305

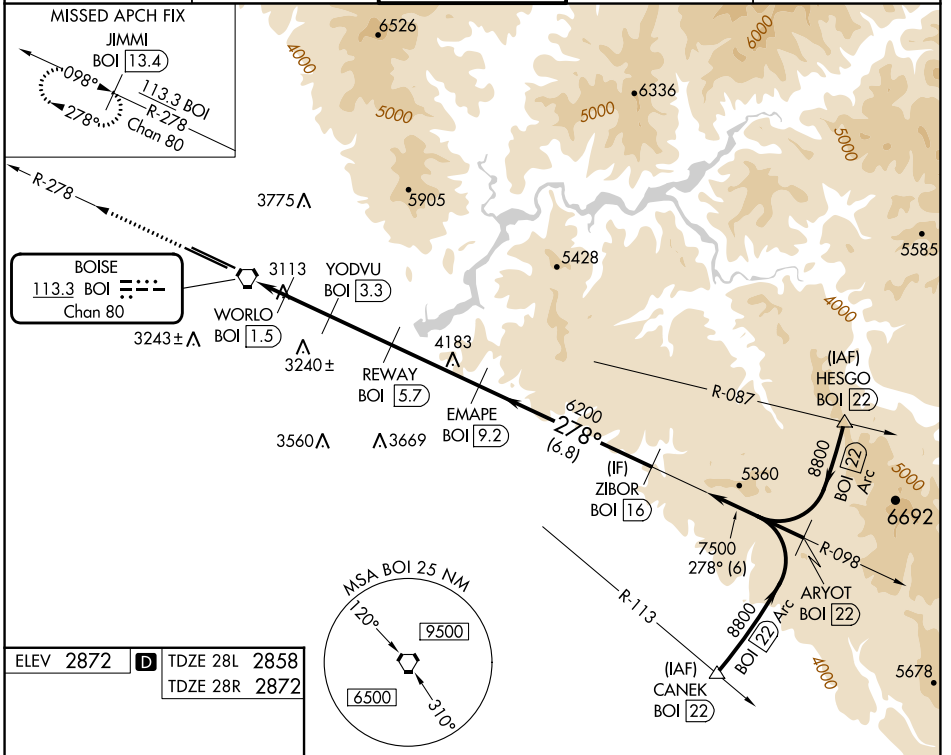
VORTAC BOI <b>113.3</b> Chan 80	APP CRS <b>278°</b>	Rwy Idg	28L	28R
		TDZE	<b>9763</b>	<b>10000</b>
			<b>2858</b>	<b>2872</b>
		Apt Elev	<b>2872</b>	<b>2872</b>

# VOR Y or TACAN Y RWY 28L

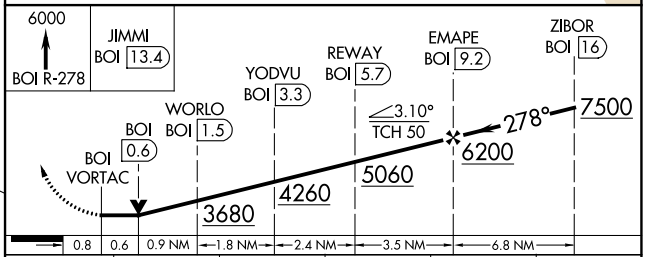
BOISE AIR TRML/GOWEN FLD (BOI)

DME required.	MALSR Rwy 28L	MISSED APPROACH: Climb to 6000 on BOI VORTAC R-278 to JIMMI/13.4 DME and hold.
<p>Circling NA north of Rwy 10L-28R. For inop ALS, increase S-28L Cat E visibility to 1/2 SM.</p>		

D-ATIS <b>123.9 290.4</b>	BIG SKY APP CON <b>119.6 269.4</b>	BOISE TOWER <b>118.1 257.8</b>	GND CON <b>121.7 348.6</b>	CLNC DEL <b>125.9 323.2</b>
------------------------------	---------------------------------------	-----------------------------------	-------------------------------	--------------------------------



ELEV 2872	TDZE 28L 2858
	TDZE 28R 2872



CATEGORY	A	B	C	D	E
S-28L	3380/24	522 (600-1/2)	3380/55	522 (600-1)	
SIDESTEP 28R	3380-1 3/8	508 (600-1 3/8)	3380-1 7/8	508 (600-1 7/8)	3380-2 1/2
CIRCLING	3440-1	568 (600-1)	3640-2 1/4	3820-3	3880-3

REIL Rwy 10L  
TDZ/CL Rwy 10R and 28L  
HIRL Rwy 10L-28R and 10R-28L

43°34'N-116°13'W

# VOR Y or TACAN Y RWY 28L

NW-1, 28 NOV 2024 to 26 DEC 2024

NW-1, 28 NOV 2024 to 26 DEC 2024