

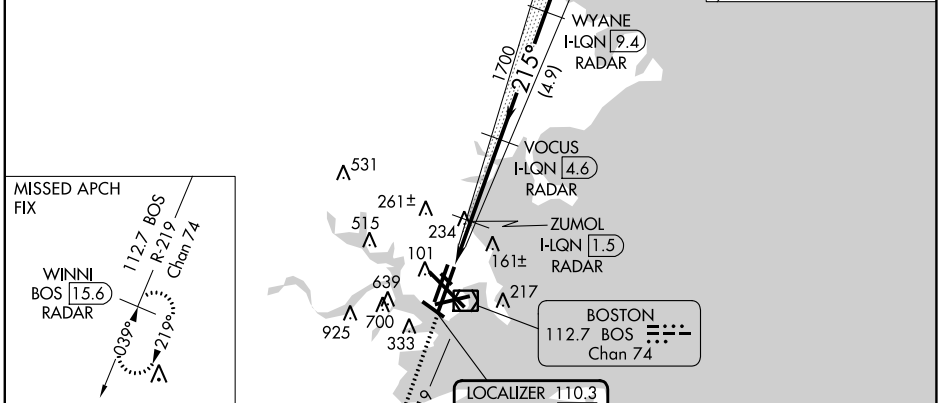
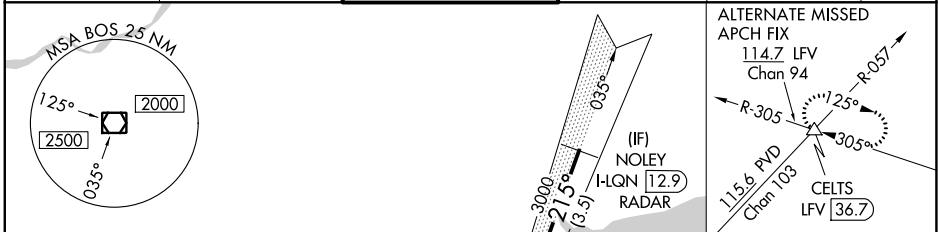
LOC/DME I-LQN 110.3 Chan 40	APP CRS 215°	Rwy ldg 8806 TDZE 16 Apt Elev 19
---	------------------------	---

ILS or LOC RWY 22L

GENERAL EDWARD LAWRENCE LOGAN INTL (BOS)

RADAR required for procedure entry. DME or RADAR required.		MALSF	MISSED APPROACH: Climb to 3000 on BOS VOR/DME R-219 to WINNI/ BOS 15.6 DME/RADAR and hold.	
Inop table does not apply to S-ILS 22L.				

D-ATIS 135.0	BOSTON APP CON 120.6 263.1	BOSTON TOWER 128.8 257.8 (WEST) 132.225 257.8 (EAST)	GND CON 121.75 121.9	CLNC DEL 121.65 257.8	CPDLC
------------------------	--------------------------------------	--	--------------------------------	---------------------------------	-------

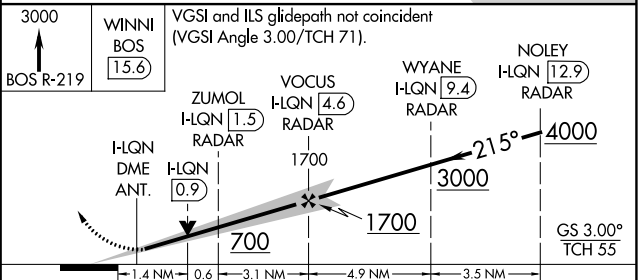


ELEV 19	D TDZE 16
215°	

TDZ/CL Rwy 4R, 15R and 33L
 REIL Rwy 4L, 27 and 32
 MRL Rwy 15L-33R
 HIRL Rwy 4L-22R, 4R-22L, 9-27, 14-32 and 15R-33L

FAF to MAP 5.1 NM

Knots	60	90	120	150	180
Min:Sec	5:06	3:24	2:33	2:02	1:42



CATEGORY	A	B	C	D
S-ILS 22L	216/40 200 (200-¾)			
S-LOC 22L	540/40	524 (600-¾)	540-1¼	524 (600-1¼)

NE-1, 28 NOV 2024 to 26 DEC 2024

NE-1, 28 NOV 2024 to 26 DEC 2024