

LOC/DME I-BOS 110.3 Chan 40	APP CRS 035°	Rwy Idg 8851 TDZE 18 Apt Elev 19
---	------------------------	---

ILS or LOC RWY 4R

GENERAL EDWARD LAWRENCE LOGAN INTL (BOS)

RNP APCH - GPS. From GOSHI.

DME required.

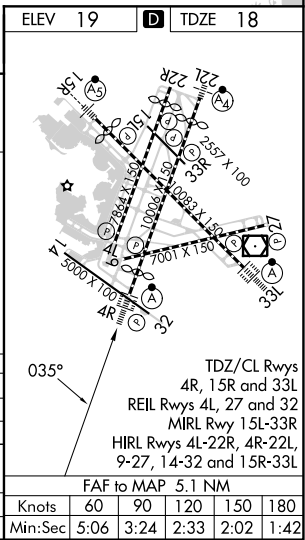
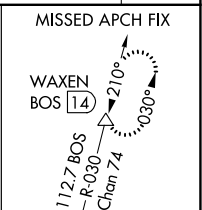
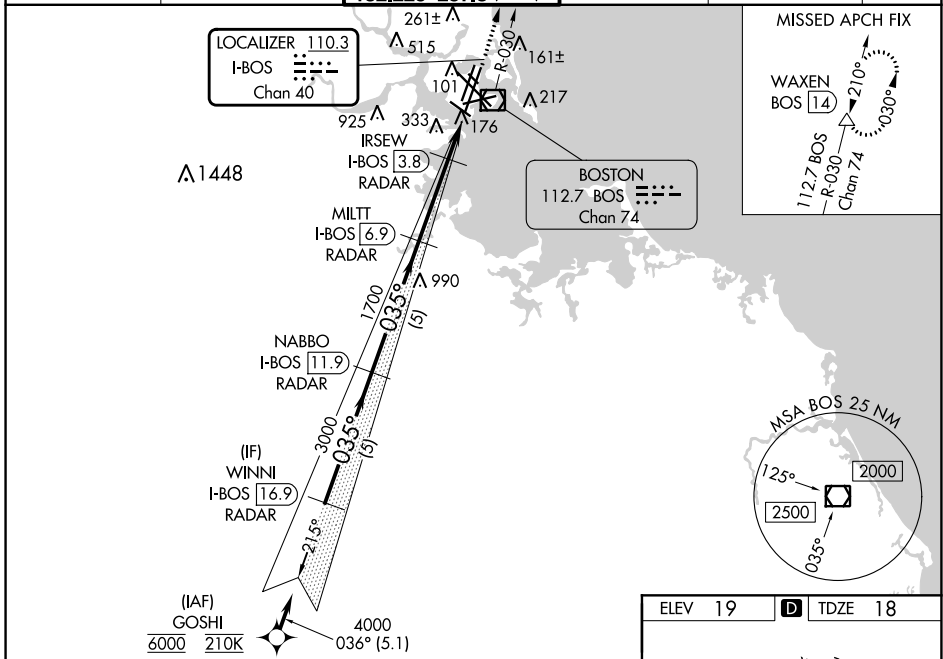
⚠ Simultaneous approach authorized. Simultaneous operations require use of vertical guidance; maintain last assigned altitude until established on glideslope.
 * For inop ALS increase S-LOC 4R Cat A/B visibility to RVR 5500.
 # When vessels taller than 144 feet present, S-ILS 4R NA.

ALSIF-2



MISSED APPROACH:
 Climb to 3000 on BOS VOR/DME R-030 to WAXEN/BOS 14 DME and hold.

D-ATIS 135.0	BOSTON APP CON 120.6 263.1	BOSTON TOWER 128.8 257.8 (WEST) 132.225 257.8 (EAST)	GND CON 121.75 121.9	CLNC DEL 121.65 257.8	CPDLC
------------------------	--------------------------------------	--	--------------------------------	---------------------------------	-------



VGSI and ILS glidepath not coincident (VGSI Angle 3.00/TCH 67).

6000	4000	3000	1700	700	3000	WAXEN
GOSHI	WINNI I-BOS [16.9] RADAR	NABBO I-BOS [11.9] RADAR	MILTT I-BOS [6.9] RADAR	IRSEW I-BOS [3.8] RADAR	I-BOS [2.9]	I-BOS [1.8]
GS 3.00° TCH 51	5.1 NM	5 NM	5 NM	3.1 NM	0.9 NM	1.1 NM
CATEGORY	A	B	C	D		
S-ILS 4R		218/18	200 (200-½)			
S-LOC 4R	440/24	422 (500-½)	440/40	422 (500-¾)		
# APPROACH MINIMA WHEN CONTROL TOWER REPORTS TALL VESSELS IN APPROACH AREA						
S-ILS 4R		374/40	356 (400-¾)			
S-LOC 4R*		440/40	422 (500-¾)			

NE-1, 28 NOV 2024 to 26 DEC 2024

NE-1, 28 NOV 2024 to 26 DEC 2024