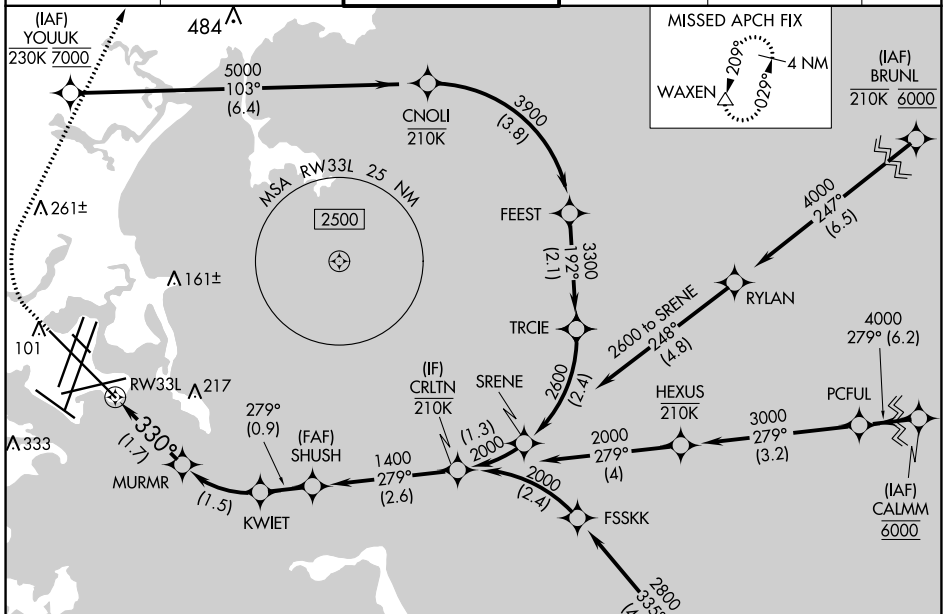


APP CRS	Rwy ldg	10083
330°	TDZE	16
	Apt Elev	19

RNAV (RNP) X RWY 33L

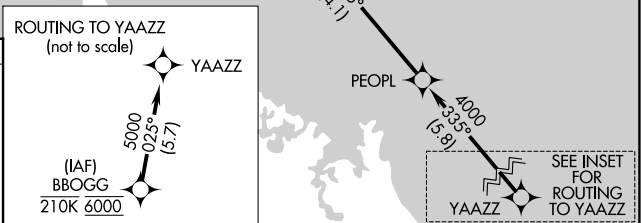
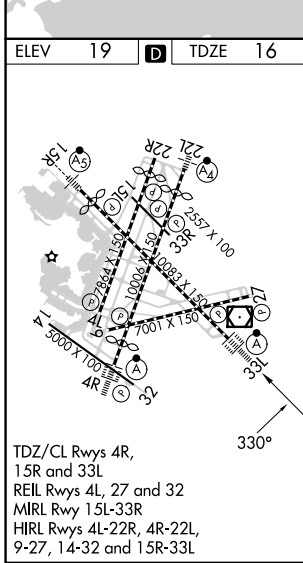
GENERAL EDWARD LAWRENCE LOGAN INTL (BOS)

RNP AR APCH. RF required.		ALSF-2		MISSED APPROACH: Climb to 600 then climbing right turn to 3000 direct WAXEN and hold.	
<p>▼ For uncompensated Baro-VNAV systems, procedure NA below -14°C or above 54°C. For inop ALS, increase RNP 0.30 all Cnts visibility to RVR 4000.</p> <p>▲ NA</p>		<p>BOSTON TOWER</p> <p>128.8 257.8 (WEST)</p> <p>132.225 257.8 (EAST)</p>		<p>GND CON</p> <p>121.75 121.9</p>	
<p>D-ATIS</p> <p>135.0</p>		<p>BOSTON APP CON</p> <p>120.6 263.1</p>		<p>CLNC DEL</p> <p>121.65 257.8</p>	
				<p>CPDLC</p>	



NE-1, 28 NOV 2024 to 26 DEC 2024

NE-1, 28 NOV 2024 to 26 DEC 2024



ELEV 19	D	TDZE 16		
<p>TDZ/CL Rws 4R, 15R and 33L</p> <p>REIL Rws 4L, 27 and 32</p> <p>MIRL Rwy 15L-33R</p> <p>HIRL Rws 4L-22R, 4R-22L, 9-27, 14-32 and 15R-33L</p>				
<p>GP 3.00° TCH 52</p>				
<p>VGSI and RNAV glidepath not coincident (VGSI Angle 3.00/TCH 68).</p>				
CRLTN	SHUSH	KWJET	MURMR	WAXEN
2000	1400	1099	612	600 3000
<p>2.6 NM</p>			<p>0.9 NM</p>	
<p>1.5 NM</p>			<p>1.7 NM</p>	
CATEGORY	A	B	C	D
RNP 0.30 DA	273/24		257 (300-½)	
AUTHORIZATION REQUIRED				