

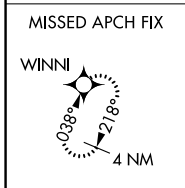
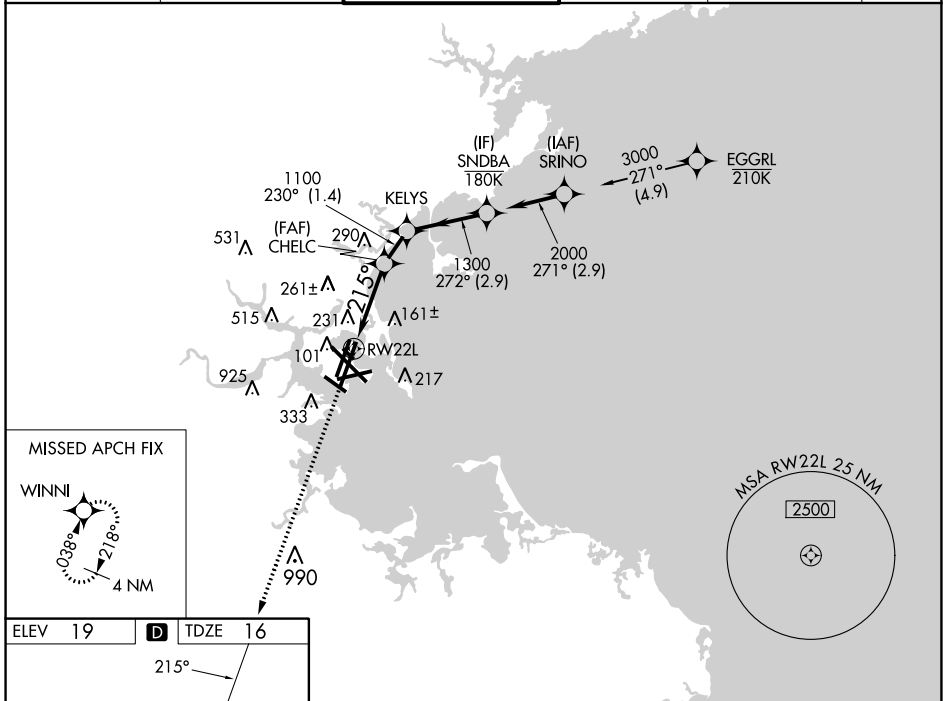
WAAS CH 77645 W22B	APP CRS 215°	Rwy Idg TDZE Apt Elev	8806 16 19
--	------------------------	-----------------------------	---------------------------------------

RNAV (GPS) Y RWY 22L

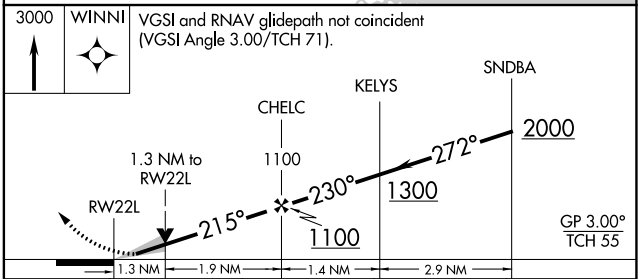
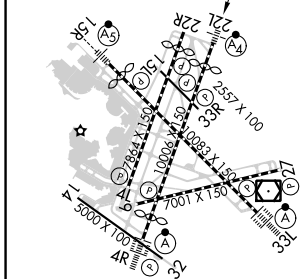
GENERAL EDWARD LAWRENCE LOGAN INTL (BOS)

RNP APCH - GPS.		MALSF	MISSED APPROACH: Climb to 3000 direct WINNI and hold.	
▼ For uncompensated Baro-VNAV systems, LNAV/VNAV NA below -14°C or above 54°C. Inop table does not apply to LPV all Cats.				

D-ATIS 135.0	BOSTON APP CON 120.6 263.1	BOSTON TOWER 128.8 257.8 (WEST) 132.225 257.8 (EAST)	GND CON 121.75 121.9	CLNC DEL 121.65 257.8	CPDLC
------------------------	--------------------------------------	--	--------------------------------	---------------------------------	-------



ELEV 19	D	TDZE 16
---------	----------	---------



CATEGORY	A	B	C	D
LPV DA		216/40	200 (200-¾)	
LNAV/VNAV DA		408/45	392 (400-⅞)	
LNAV MDA	500/40	484 (500-¾)	500/60	484 (500-1¼)

TDZ/CL Rwy 4R, 15R and 33L
REIL Rwy 4L, 27 and 32
MIRL Rwy 15L-33R
HIRL Rwy 4L-22R, 4R-22L,
9-27, 14-32 and 15R-33L