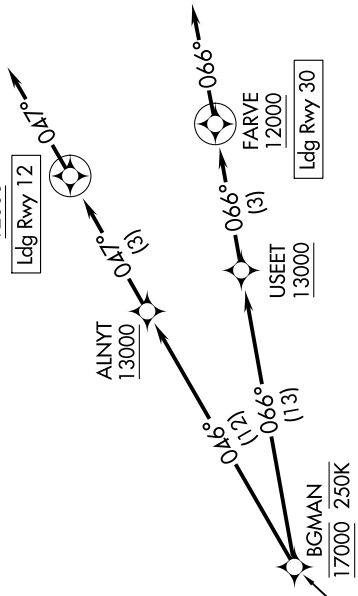


NW-1, 28 NOV 2024 to 26 DEC 2024

BIG SKY APP CON\*  
 118.975 226.675  
 SALT LAKE CENTER  
 118.975 226.675  
 ATIS  
 135.425  
 GND CON  
 121.8  
 BOZEMAN TOWER\*  
 118.2

RNAV 1 - GPS.
RADAR required.



NOTE: GPS required.  
 NOTE: Chart not to scale.

ARRIVAL ROUTE DESCRIPTION

KARTS TRANSITION (KARTS.BGMAN1)

**LANDING RUNWAY 12:** From BGMAN on track 046° to cross ALNYT at or above 13000, then on track 047° to cross JAZMN at or above 12000, then on track 047°. Expect RNAV (RNP) RWY 12 approach or RADAR vectors to final approach course.

**LANDING RUNWAY 30:** From BGMAN on track 066° to cross USEET at or above 13000, then on track 066° to cross FARVE at or above 12000, then on track 066°. Expect RNAV (RNP) RWY 30 approach or RADAR vectors to final approach course.

NW-1, 28 NOV 2024 to 26 DEC 2024