

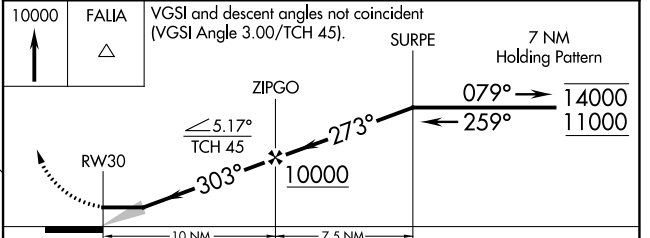
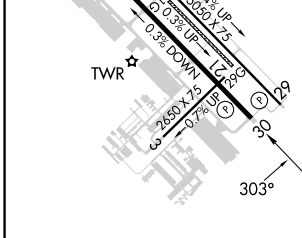
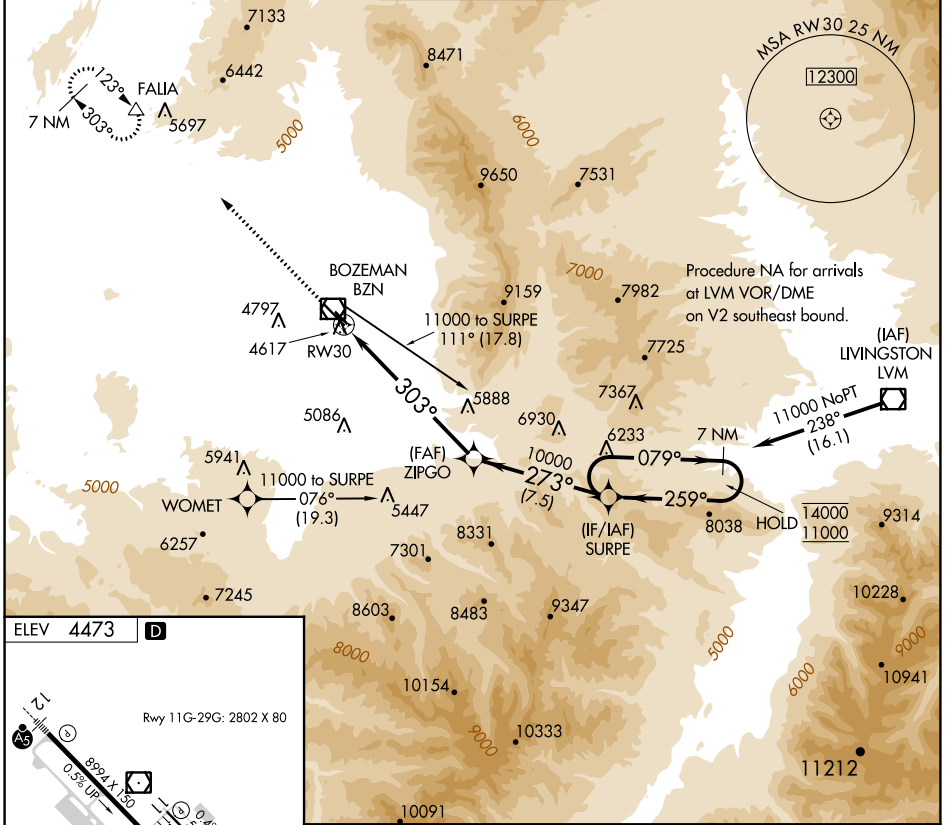
APP CRS 303°	Rwy Idg TDZE Apt Elev	N/A N/A 4473
------------------------	-----------------------------	---

RNAV (GPS)-A

BOZEMAN YELLOWSTONE INTL (BZN)

RNP APCH.	MISSED APPROACH: Climb to 10000 direct FALIA and hold, continue climb-in-hold to 10000.
<p>Circling NA to Rwy's 3-21 and 11-29.</p> <p>-22°C</p>	

ATIS 135.425	BIG SKY APP CON * 118.975 226.675	BOZEMAN TOWER * 118.2 (CTAF)	GND CON 121.8	UNICOM 122.95
------------------------	---	--	-------------------------	-------------------------



REIL Rwy 30	HIRL Rwy 12-30	MIRL Rwy 11-29		
CATEGORY	A	B	C	D
CIRCLING	6020-1¼ 1547 (1600-1¼)	6020-1½ 1547 (1600-1½)	6020-3 1547 (1600-3)	6300-3 1827 (1900-3)

NW-1, 28 NOV 2024 to 26 DEC 2024

NW-1, 28 NOV 2024 to 26 DEC 2024