

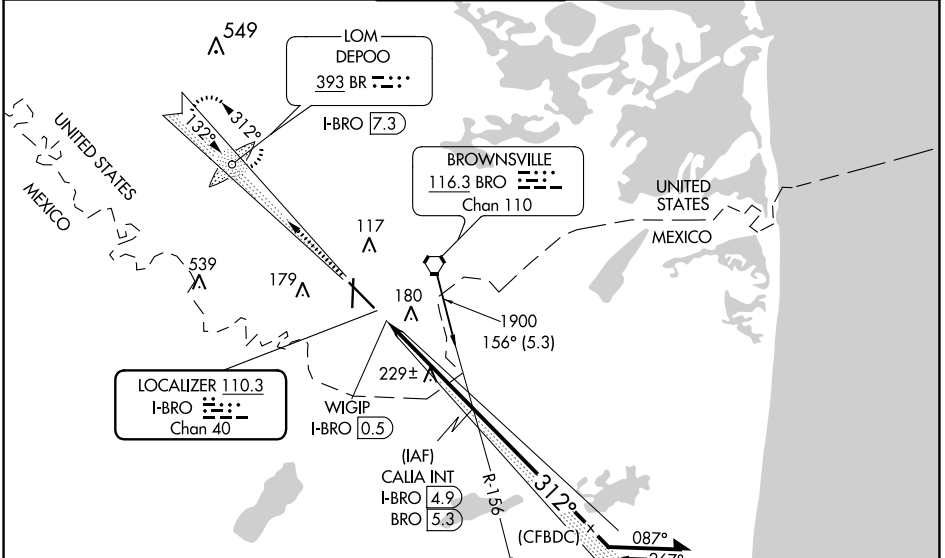
LOC/DME I-BRO 110.3 Chan 40	APP CRS 312°	Rwy Idg 7399 TDZE 20 Apt Elev 22
---	------------------------	---

LOC BC RWY 31
BROWNSVILLE/SOUTH PADRE ISLAND INTL (BRO)

⚠ Helicopter visibility reduction below ¼ SM NA. When local altimeter setting not received, use Port Isabel altimeter setting and increase all MDA 40 ft; increase Circling Cat D visibility ¼ mile. Circling to Rwy 18 NA at night. ADF or DME required. VDP NA when using Port Isabel altimeter setting.

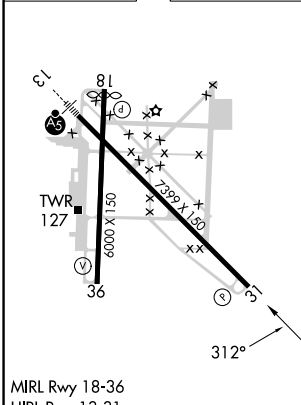
⚠ MISSED APPROACH: Climb to 1900 on I-BRO localizer NW course (312°) to DEPOO LOM/ I-BRO 7.3 DME and hold.

ATIS 128.55	VALLEY APP CON 119.5 257.6	BROWNSVILLE TOWER* 118.9 (CTAF) 0 239.3	GND CON 121.9	UNICOM 122.95
-----------------------	--------------------------------------	---	-------------------------	-------------------------

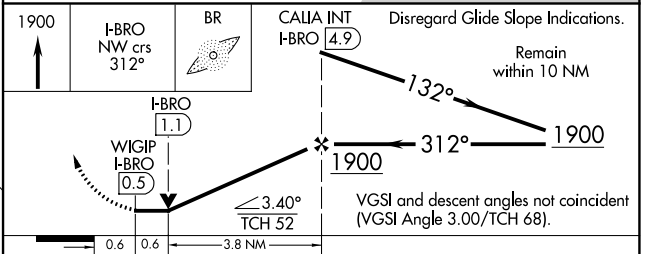


BACK COURSE

ELEV 22	D	TDZE 20
---------	----------	---------



FAF to MAP 4.4 NM					
Knots	60	90	120	150	180
Min:Sec	4:24	2:56	2:12	1:46	1:28



CATEGORY	A	B	C	D
S-31	480-1	460 (500-1)	480-1⅓	460 (500-1⅓)
C CIRCLING	480-1 458 (500-1)	540-1 518 (600-1)	540-1½ 518 (600-1½)	680-2 658 (700-2)

SC-3, 28 NOV 2024 to 26 DEC 2024

SC-3, 28 NOV 2024 to 26 DEC 2024