


APP CRS	Rwy Idg	5801
079°	TDZE	727
	Apt Elev	778

RNAV (RNP) Y RWY 8

BOB HOPE (BUR)

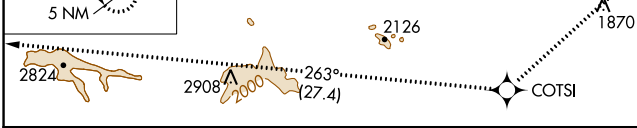
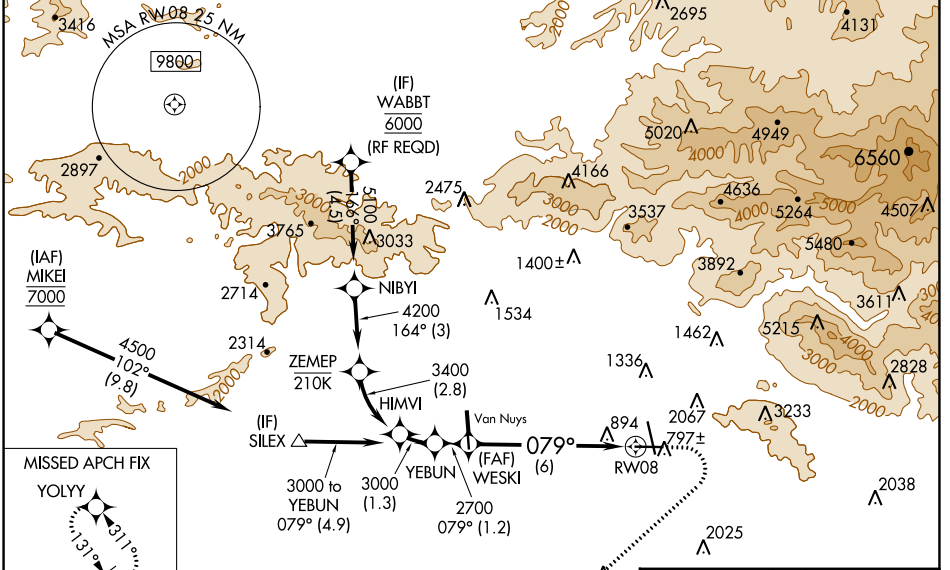
RNP AR APCH.

⚠ For uncompensated Baro-VNAV systems, procedure NA below 1°C or above 54°C. Straight-in Rwy 8 at night, operational VGSI required, remain on or above VGSI glidepath until threshold. Inop table does not apply to RNP 0.20* and RNP 0.30. For inop ALS, increase RNP 0.30# all Cats visibility to 1½ SM.

MALSR 

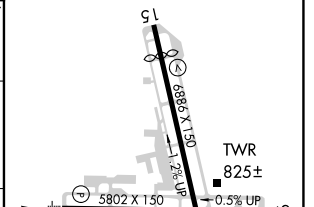
MISSED APPROACH: Climb to 1200 then climbing right turn to 4600 direct COTSI and on track 263° to YOLYY and hold.
 *Missed approach requires minimum climb of 340 feet per NM to 2400.
 # Missed approach requires minimum climb of 317 feet per NM to 2400.

D-ATIS	SOCAL APP CON	BURBANK TOWER	GND CON	CLNC DEL	CPDLC
134.5	120.4 360.6 (NORTH) 134.2 338.2 (WEST)	118.7 254.3	123.9 348.6	118.0 348.6	



ELEV	778	TDZE	727
------	-----	------	-----

YEBUN	WESKI	RWY08
3000	2700	
079°		
GP 3.00°	TCH 60	
1.2 NM	6 NM	



CATEGORY	A	B	C	D
RNP 0.20 DA*		1068/50	341 (300-1)	
RNP 0.30 DA#		1151/50	424 (400-1)	
RNP 0.30 DA		1485-2½	758 (800-2½)	

AUTHORIZATION REQUIRED

MIRL Rwy 15-33
 HIRL Rwy 8-26
 REIL Rwy 15, 26 and 33

SW-3, 28 NOV 2024 to 26 DEC 2024

SW-3, 28 NOV 2024 to 26 DEC 2024