

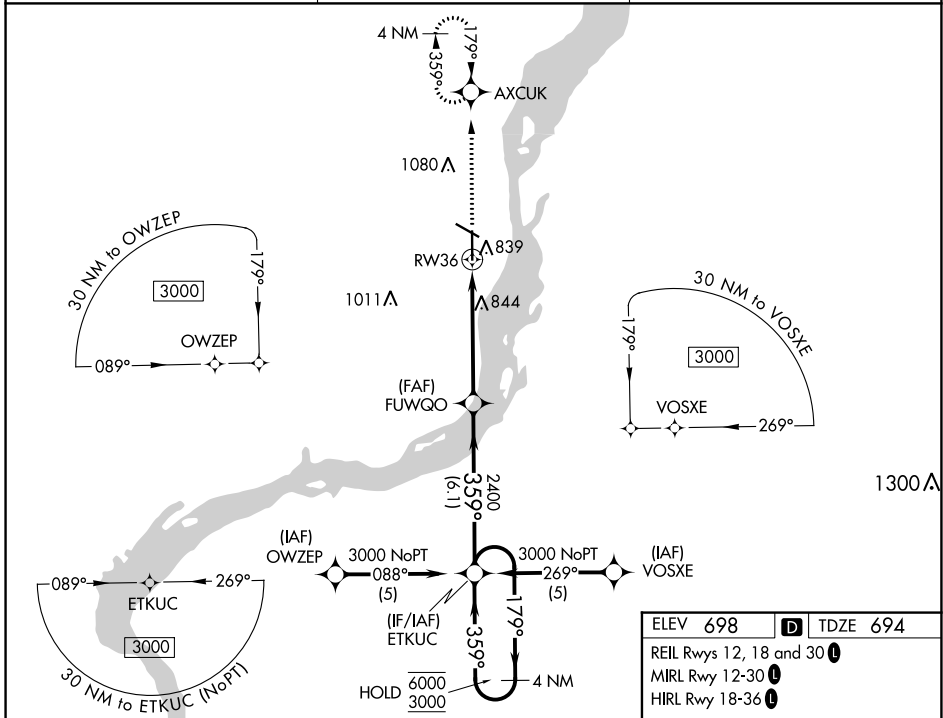
WAAS CH <b>42711</b> <b>W36A</b>	APP CRS <b>359°</b>	Rwy Idg TDZE Apt Elev	<b>6102</b> <b>694</b> <b>698</b>
--	------------------------	-----------------------------	---

# RNAV (GPS) RWY 36

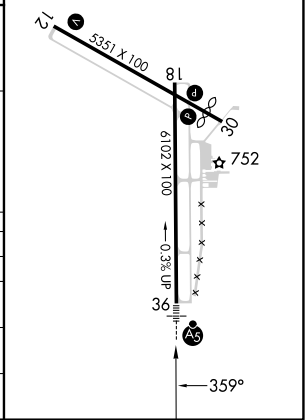
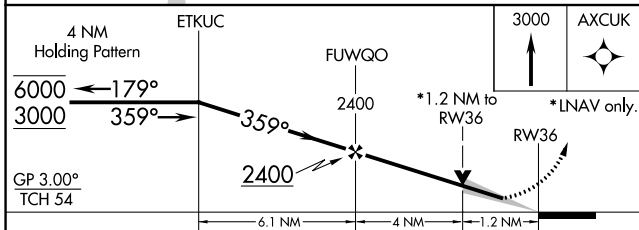
SOUTHEAST IOWA RGNL (B.R.L.)

RNP APCH.	MALSR	MISSED APPROACH: Climb to 3000 direct AXCUK and hold, continue climb-in-hold to 3000.
For uncompensated Baro-VNAV systems, LNAV/VNAV NA below -16°C or above 54°C.		

ASOS <b>118.025</b>	CHICAGO CENTER <b>135.6 370.95</b>	UNICOM <b>123.0 (CTAF)</b>
------------------------	---------------------------------------	-------------------------------



ELEV 698	TDZE 694
REIL Rwy 12, 18 and 30	
MIRL Rwy 12-30	
HIRL Rwy 18-36	



CATEGORY	A	B	C	D
LPV DA	894-1/2	200 (200-1/2)		NA
LNAV/VNAV DA	1026-3/4	332 (400-3/4)		NA
LNAV MDA	1100-1/2	406 (500-1/2)	1100-3/4 406 (500-3/4)	NA
CIRCLING	1180-1	482 (500-1)	1380-2 682 (700-2)	NA

NC-3, 28 NOV 2024 to 26 DEC 2024

NC-3, 28 NOV 2024 to 26 DEC 2024