

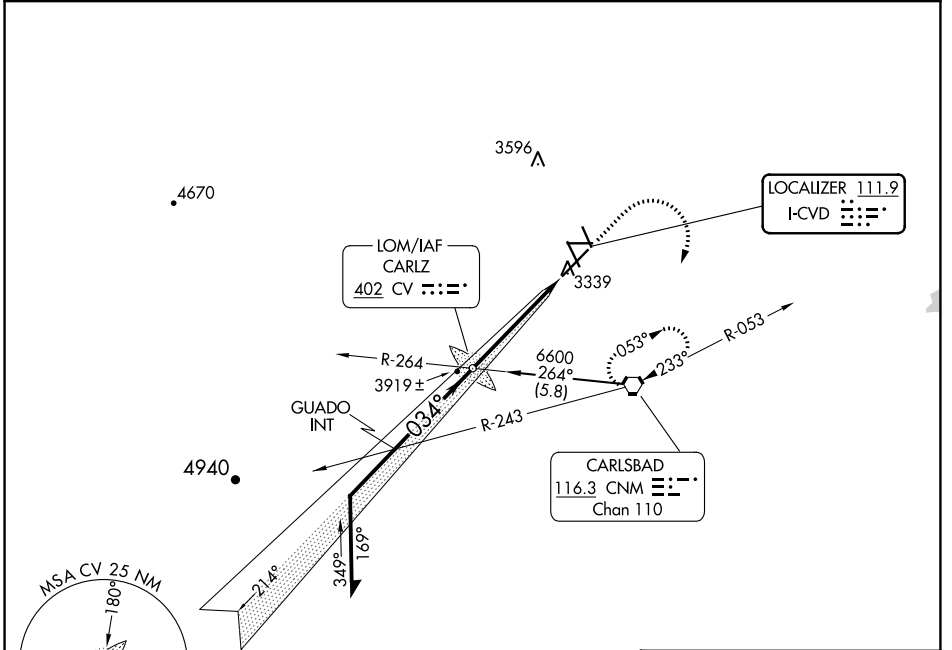
LOC I-CVD 111.9	APP CRS 034°	Rwy Idg TDZE Apt Elev	7504 3295 3295
---------------------------	------------------------	-----------------------------	---

ILS RWY 3

CAVERN CITY AIR TRML (CNM)

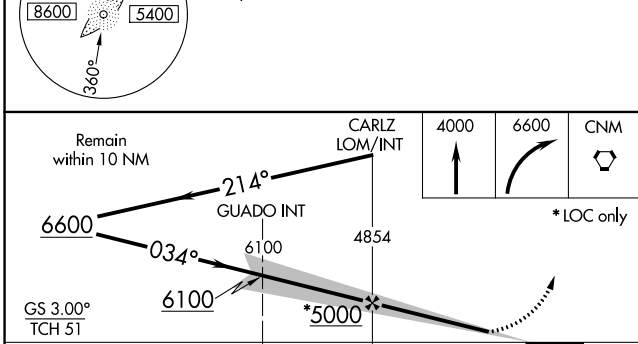
	MALSIR	MISSED APPROACH: Climb to 4000 then climbing right turn to 6600 direct CNM VORTAC and hold.

ASOS 118.375	ALBUQUERQUE CENTER 135.875 292.15	UNICOM 123.0 (CTAF) 0
------------------------	---	---------------------------------



SW-1, 28 NOV 2024 to 26 DEC 2024

SW-1, 28 NOV 2024 to 26 DEC 2024



CATEGORY	A	B	C	D
S-ILS 3	3495-½		200 (200-½)	
S-LOC 3	3940-½	645 (700-½)	3940-1¼ 645 (700-1¼)	3940-1½ 645 (700-1½)
CIRCLING	3940-1	645 (700-1)	3960-1⅜ 665 (700-1⅜)	4260-3 965 (1000-3)

ELEV 3295 **D** TDZE 3295

MIRL Rwys 3-21, 8-26, and 14R-32L

FAF to MAP 4.7 NM

Knots	60	90	120	150	180
Min:Sec	4:42	3:08	2:21	1:53	1:34