

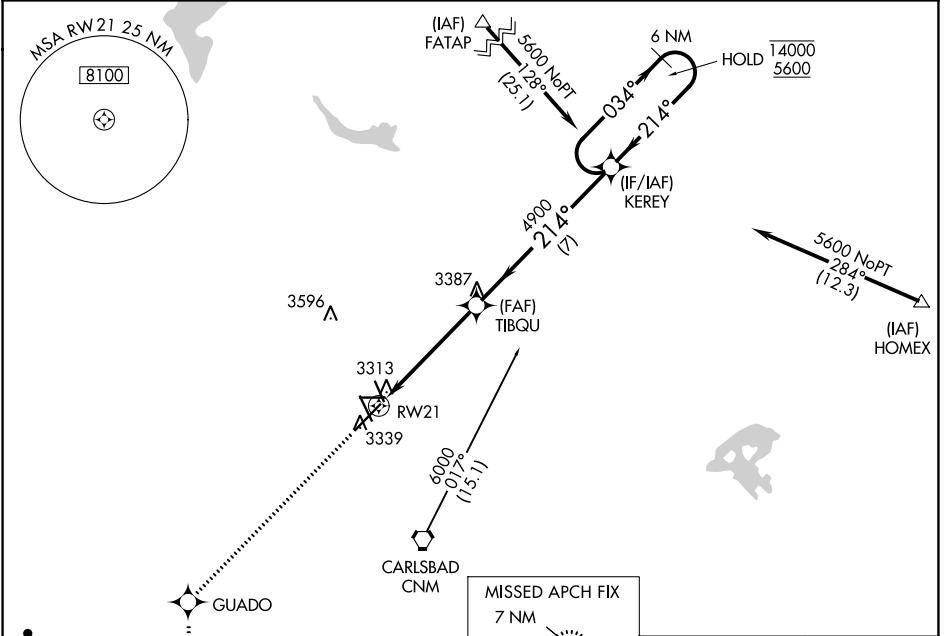
WAAS CH <b>90234</b> <b>W21A</b>	APP CRS <b>214°</b>	Rwy ldg TDZE Apt Elev	<b>7854</b> <b>3264</b> <b>3295</b>
--	------------------------	-----------------------------	---

# RNAV (GPS) RWY 21

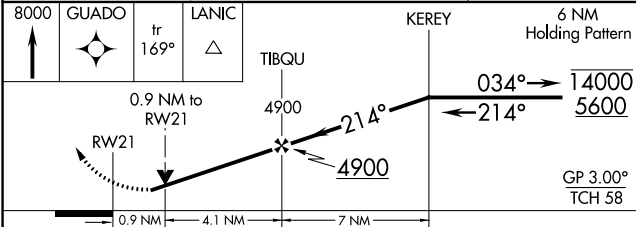
CAVERN CITY AIR TRML (CNM)

RNP APCH - GPS.	MISSED APPROACH: Climb to 8000 direct GUADO and on track 169° to LANIC and hold, continue climb-in-hold to 8000.
-----------------	--

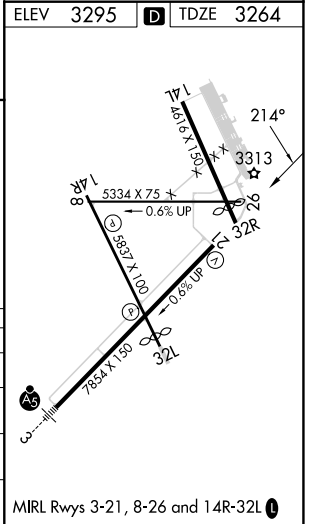
ASOS <b>118.375</b>	ALBUQUERQUE CENTER <b>135.875 292.15</b>	UNICOM <b>123.0 (CTAF) 0</b>
------------------------	---	---------------------------------



ELEV 3295	TDZE 3264
-----------	-----------



CATEGORY	A	B	C	D
LPV DA		3514-3 <sup>3</sup> / <sub>4</sub>	250 (300-3 <sup>3</sup> / <sub>4</sub> )	
LNAV/VNAV DA		3514-3 <sup>3</sup> / <sub>4</sub>	250 (300-3 <sup>3</sup> / <sub>4</sub> )	
LNAV MDA	3580-1	316 (300-1)	3580-7 <sup>7</sup> / <sub>8</sub>	316 (300-7 <sup>7</sup> / <sub>8</sub> )
CIRCLING	3700-1 405 (500-1)	3780-1 485 (500-1)	3960-1 <sup>1</sup> / <sub>4</sub> 665 (700-1 <sup>1</sup> / <sub>4</sub> )	4260-3 965 (1000-3)



SW-1, 28 NOV 2024 to 26 DEC 2024

SW-1, 28 NOV 2024 to 26 DEC 2024