

WAAS CH <b>81835</b> <b>W03A</b>	APP CRS <b>034°</b>	Rwy Idg TDZE Apt Elev	<b>7504</b> <b>3295</b> <b>3295</b>
--	------------------------	-----------------------------	---

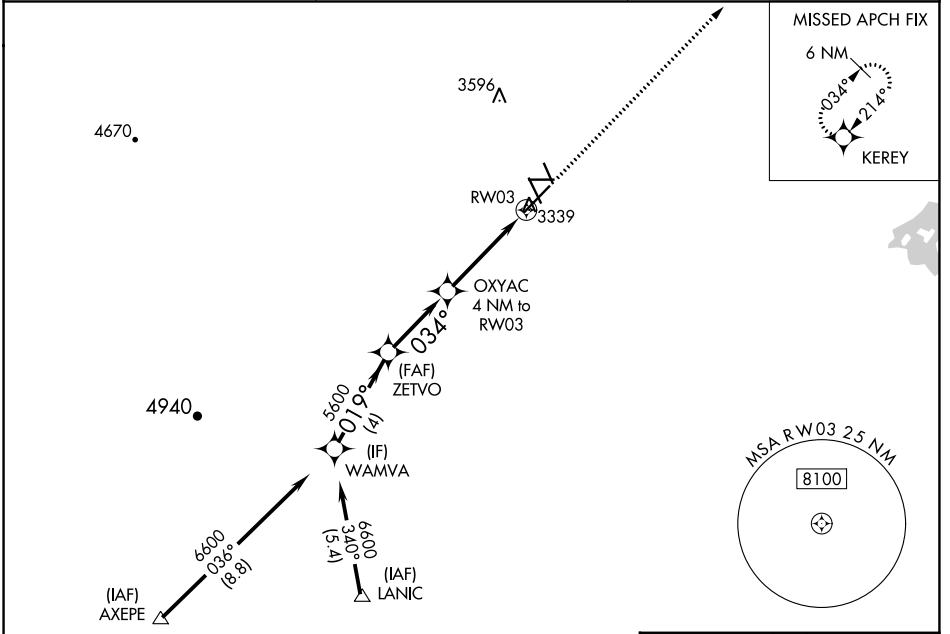
# RNAV (GPS) RWY 3

CAVERN CITY AIR TRML (CNM)

**⚠** For uncompensated Baro-VNAV systems, LNAV/VNAV NA below -10°C (14°F) or above 52°C (126°F). DME/DME RNP-0.3 NA. For inop MALS, increase LNAV Cat C/D visibility to 2½ miles, and increase LNAV/VNAV all Cats visibility to ¾ mile.

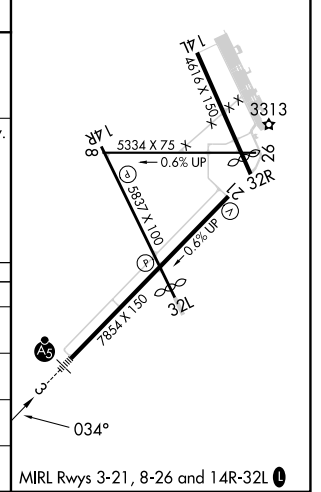
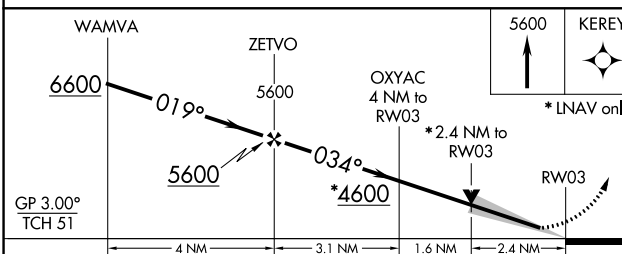
**MALS**  
**⚠** MISSED APPROACH: Climb to 5600 direct KEREY and hold.

ASOS <b>118.375</b>	ALBUQUERQUE CENTER <b>135.875 292.15</b>	UNICOM <b>123.0 (CTAF) 0</b>
------------------------	---	---------------------------------



Procedure NA for arrivals at AXEPE on V102 southwest bound. Procedure NA for arrivals at LANIC on V560 southwest bound.

ELEV 3295	<b>D</b> TDZE 3295
-----------	--------------------



CATEGORY	A	B	C	D
LPV DA		3495-½	200 (200-½)	
LNAV/VNAV DA		3545-½	250 (300-½)	
LNAV MDA	4100-½ 805 (900-½)	4100-¾ 805 (900-¾)	4100-⅞	805 (900-1⅞)
<b>C</b> CIRCLING	4100-1 805 (900-1)	4100-1¼ 805 (900-1¼)	4100-2½ 805 (900-2½)	4260-3 965 (1000-3)

MIRL Rwy 3-21, 8-26 and 14R-32L **0**  
CAVERN CITY AIR TRML (CNM)  
**RNAV (GPS) RWY 3**

SW-1, 28 NOV 2024 to 26 DEC 2024

SW-1, 28 NOV 2024 to 26 DEC 2024