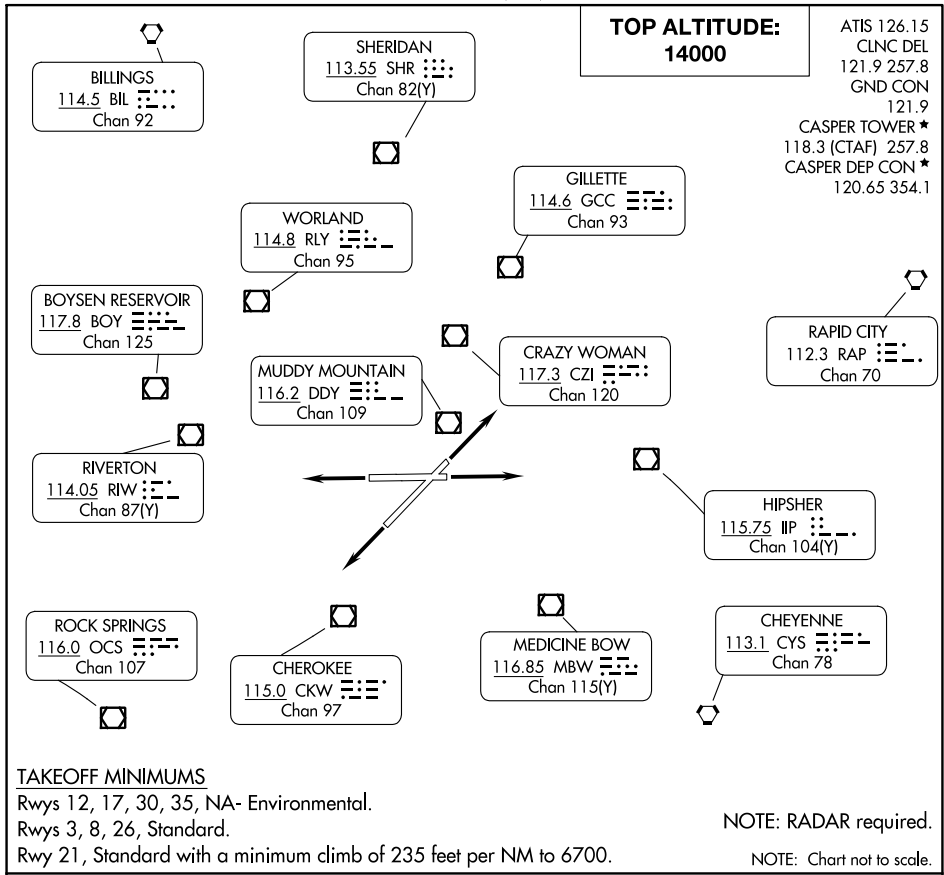


# CASPER THREE DEPARTURE

AL-72 (FAA)

CASPER/NATRONA COUNTY INTL (CPR)

CASPER, WYOMING



NW-1, 28 NOV 2024 to 26 DEC 2024

NW-1, 28 NOV 2024 to 26 DEC 2024

### TAKEOFF MINIMUMS

Rwys 12, 17, 30, 35, NA- Environmental.  
 Rwys 3, 8, 26, Standard.  
 Rwy 21, Standard with a minimum climb of 235 feet per NM to 6700.

NOTE: RADAR required.  
 NOTE: Chart not to scale.

**DEPARTURE ROUTE DESCRIPTION**

**TAKEOFF RUNWAY 3:** Climb on a heading between 212° CW 094° from DER as assigned by ATC thence. . . .

**TAKEOFF RUNWAY 8:** Climb on a heading between 257° CW 094° from DER as assigned by ATC thence. . . .

**TAKEOFF RUNWAY 21:** Climb on a heading between 195° CW 032° from DER as assigned by ATC thence. . . .

**TAKEOFF RUNWAY 26:** Climb on a heading between 190° CW 077° from DER as assigned by ATC thence. . . .

. . . .Maintain 14000' or assigned lower altitude. Expect RADAR vectors to filed/assigned fix/route. Expect further clearance to filed altitude ten minutes after departure.

**LOST COMMUNICATIONS**

If no transmissions are received for one minute after departure, maintain assigned heading until 7,000 feet, then climb to filed altitude via direct DDY VOR/DME, then via assigned route. Runways 3 and 8 turn left to DDY VOR/DME, runways 21 and 26 turn right to DDY VOR/DME.

# CASPER THREE DEPARTURE