

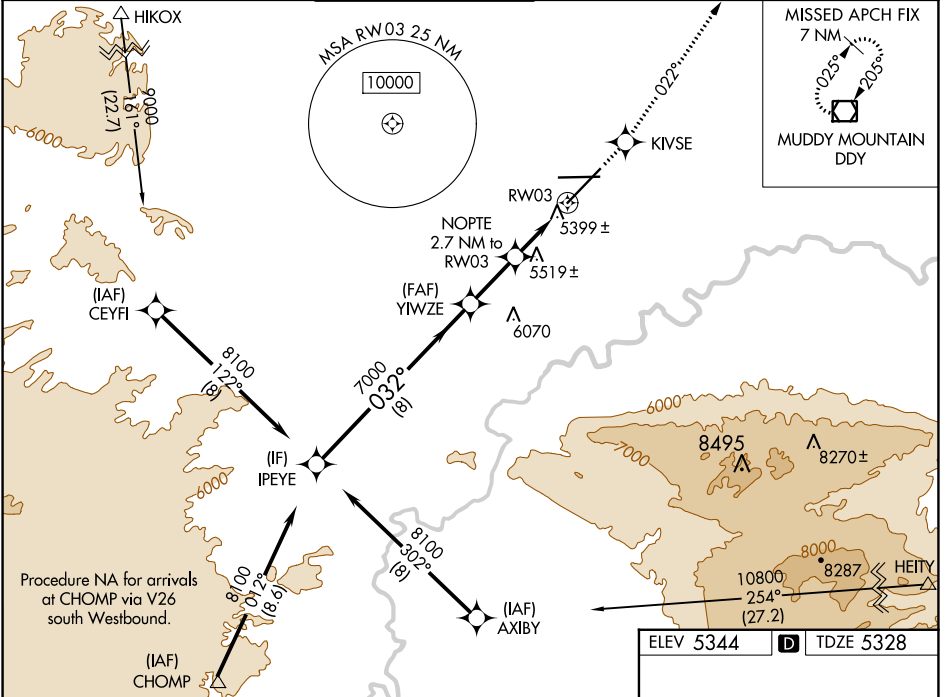
WAAS CH <b>73006</b> <b>W03A</b>	APP CRS <b>032°</b>	Rwy Idg <b>10165</b> TDZE <b>5328</b> Apt Elev <b>5344</b>
--	------------------------	--

# RNAV (GPS) RWY 3

CASPER/NATRONA COUNTY INTL (C'PR)

<b>⚠</b> For inoperative MALSR, increase LPV all Cats visibility to 1 mile. <b>⚠</b> For uncompensated Baro-VNAV systems, LNAV/VNAV NA below -25°C (-13°F) or above 38°C (100°F). DME/DME RNP-0.3 NA.	MALSR 	MISSED APPROACH: Climb to 7500 direct KIVSE and via track 022° to DDY VOR/DME and hold.
---	-----------	---

ATIS <b>126.15</b>	CASPER APP CON * <b>120.65 354.1</b>	CASPER TOWER * <b>118.3 (CTAF) 0 257.8</b>	GND CON <b>121.9</b>	CLNC DEL <b>121.9 257.8</b>	UNICOM <b>122.95</b>
-----------------------	---	---	-------------------------	--------------------------------	-------------------------



NW-1, 28 NOV 2024 to 26 DEC 2024

NW-1, 28 NOV 2024 to 26 DEC 2024

Procedure Turn NA	IPEYE	YIWZE	NOPT 2.7 NM to RW03	KIVSE 7500	tr 022°	DDY
8100	032°	7000	*1.3 NM to RW03	RW03	*LNAV only	
GP 3.00°			*6240			
TCH 52	8 NM	2.3 NM	1.4 NM	1.3 NM		
CATEGORY	A	B	C	D		
LPV DA		5643/24	315 (300-½)			
LNAV/VNAV DA		5691/40	363 (400-¾)			
LNAV MDA	5780/24	452 (500-½)	5780/40 452 (500-¾)	5780/50 452 (500-1)		
CIRCLING	5780-1 436 (500-1)	5800-1 456 (500-1)	5860-1½ 516 (600-1½)	6200-2¾ 856 (900-2¾)		

