

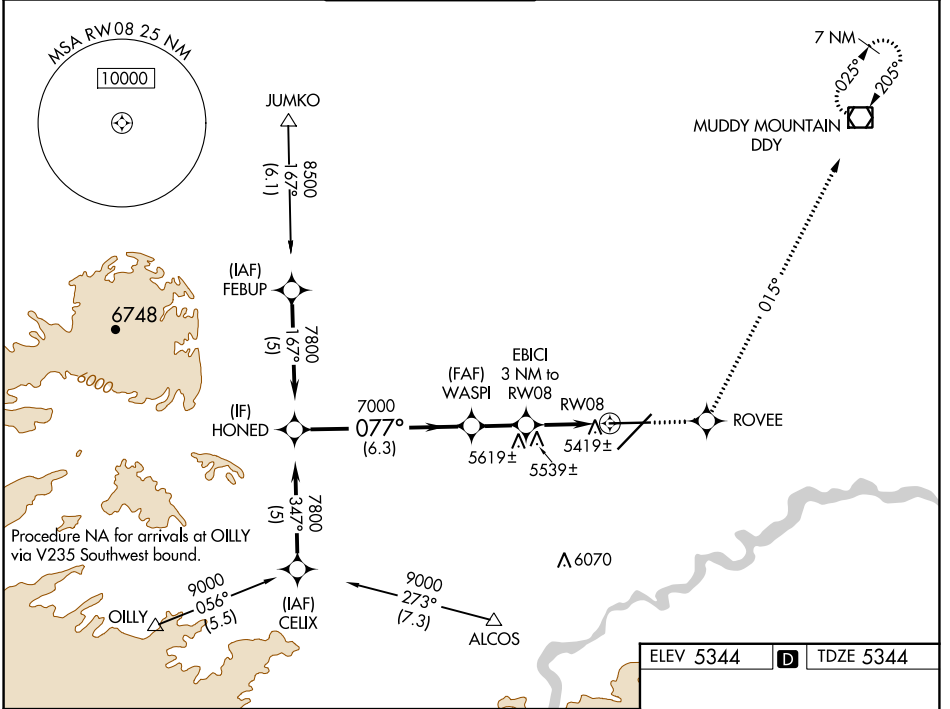
WAAS CH 86306 W08A	APP CRS 077°	Rwy Idg 8679 TDZE 5344 Apt Elev 5344
--	------------------------	---

RNAV (GPS) RWY 8

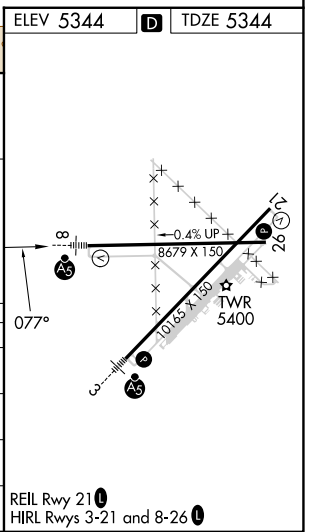
CASPER/NATRONA COUNTY INTL (CPR)

<p>▼ For uncompensated Baro-VNAV systems, LNAV/VNAV NA below -25°C (-13°F) or above 38°C (100°F). ▲ DME/DME RNP-0.3 NA.</p>	<p>MALSR</p>	<p>MISSED APPROACH: Climb to 7700 direct ROVEE and via track 015° to DDY VOR/DME and hold.</p>
---	--------------	--

ATIS 126.15	CASPER APP CON * 120.65 354.1	CASPER TOWER * 118.3 (CTAF) 0 257.8	GND CON 121.9	CLNC DEL 121.9 257.8	UNICOM 122.95
-----------------------	---	---	-------------------------	--------------------------------	-------------------------



<p>Procedure Turn NA</p> <p>GP 3.00° TCH 55</p>	<p>VGSI and RNAV glidepath not coincident (VGSI Angle 3.00 / TCH 52).</p>			
	<p>HONED</p> <p>7800</p>	<p>WASPI</p> <p>7000</p>	<p>EBICI 3 NM to RW08</p> <p>*1.3 NM to RW08</p>	<p>ROVEE</p> <p>7700</p>
<p>*LNAV only</p>		<p>tr 015°</p>		<p>DDY</p>
CATEGORY	A	B	C	D
LPV DA	5594/24		250 (300-½)	
LNAV/VNAV DA	5689/40		345 (400-¾)	
LNAV MDA	5800/24	456 (500-½)	5800/40 456 (500-¾)	5800/50 456 (500-1)
CIRCLING	5800-1	456 (500-1)	5860-1½ 516 (600-1½)	6200-2¾ 856 (900-2¾)



NW-1, 28 NOV 2024 to 26 DEC 2024

NW-1, 28 NOV 2024 to 26 DEC 2024