

WAAS CH <b>62911</b> <b>W30A</b>	APP CRS <b>303°</b>	Rwy Idg <b>10201</b> TDZE <b>1380</b> Apt Elev <b>1384</b>
----------------------------------------	------------------------	------------------------------------------------------------------

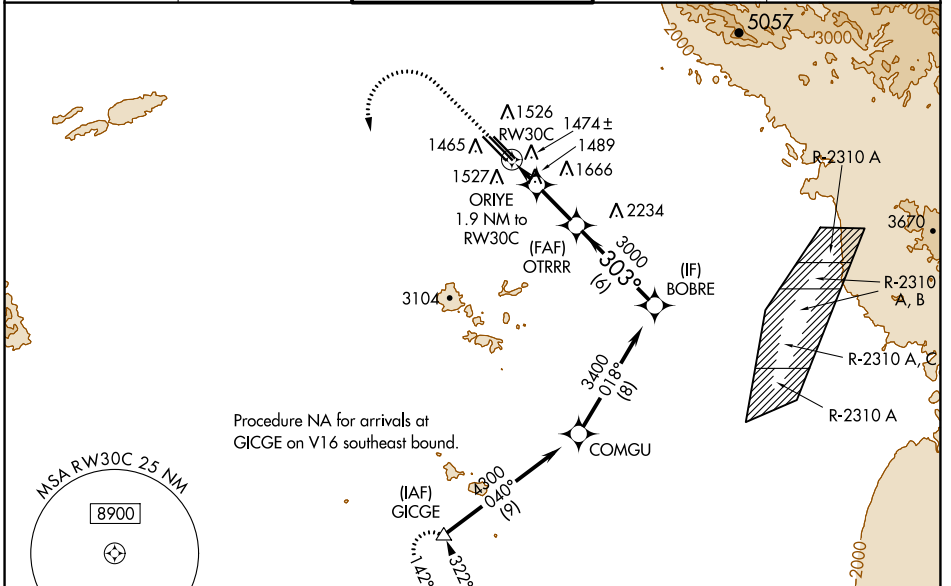
# RNAV (GPS) Y RWY 30C

PHOENIX-MESA GATEWAY (IWA)

**⚠** For uncompensated Baro-VNAV systems, LNAV/VNAV NA below -2°C (29°F) or above 35°C (95°F). DME/DME RNP-0.3 NA. When local altimeter setting not received, use Phoenix Sky Harbor Intl altimeter setting and increase LPV DA to 1660 feet, LNAV/VNAV DA to 1710 feet and all MDA 80 feet; increase LPV all Cats visibility  $\frac{1}{8}$  SM, increase LNAV/VNAV all Cats, LNAV Cats C, D and E, and Circling Cats D, E visibility  $\frac{1}{4}$  SM. VDP and Baro-VNAV NA with Phoenix Sky Harbor Intl altimeter setting.

**MISSED APPROACH:**  
Climb to 2800 then climbing left turn to 5000 direct GICGE and hold.

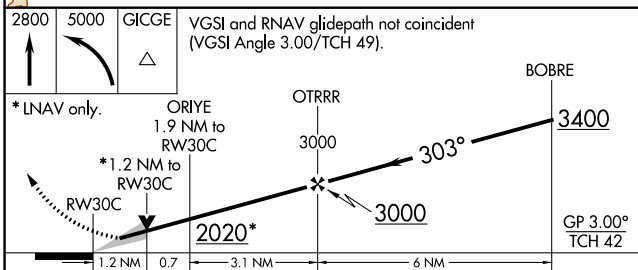
ATIS * <b>133.5 270.275</b>	PHOENIX APP CON <b>124.9 353.8</b>	GATEWAY TOWER * <b>120.6 (CTAF) 289.4</b>	GND CON <b>128.25 275.8</b>	CLNC DEL <b>135.05</b>
--------------------------------	---------------------------------------	----------------------------------------------	--------------------------------	---------------------------



SW-4, 28 NOV 2024 to 26 DEC 2024

SW-4, 28 NOV 2024 to 26 DEC 2024

ELEV 1384	<b>D</b> TDZE 1380
-----------	--------------------



CATEGORY	A	B	C	D	E
LPV DA			1580- $\frac{3}{4}$	200 (200- $\frac{3}{4}$ )	
LNAV/VNAV DA			1630- $\frac{7}{8}$	250 (300- $\frac{7}{8}$ )	
LNAV MDA	1800-1	420 (500-1)	1800-1 $\frac{1}{8}$		420 (500-1 $\frac{1}{8}$ )
CIRCLING	1880-1	496 (500-1)	1880-1 $\frac{1}{2}$ 496 (500-1 $\frac{1}{2}$ )	2000-2 616 (700-2)	2040-2 $\frac{1}{4}$ 656 (700-2 $\frac{1}{4}$ )

