

VORTAC IWA <b>113.3</b> Chan 80	APP CRS <b>302°</b>	Rwy Idg	30C	30R
		TDZE	<b>10201</b>	<b>9301</b>
		Apt Elev	<b>1380</b>	<b>1382</b>
			<b>1384</b>	<b>1384</b>

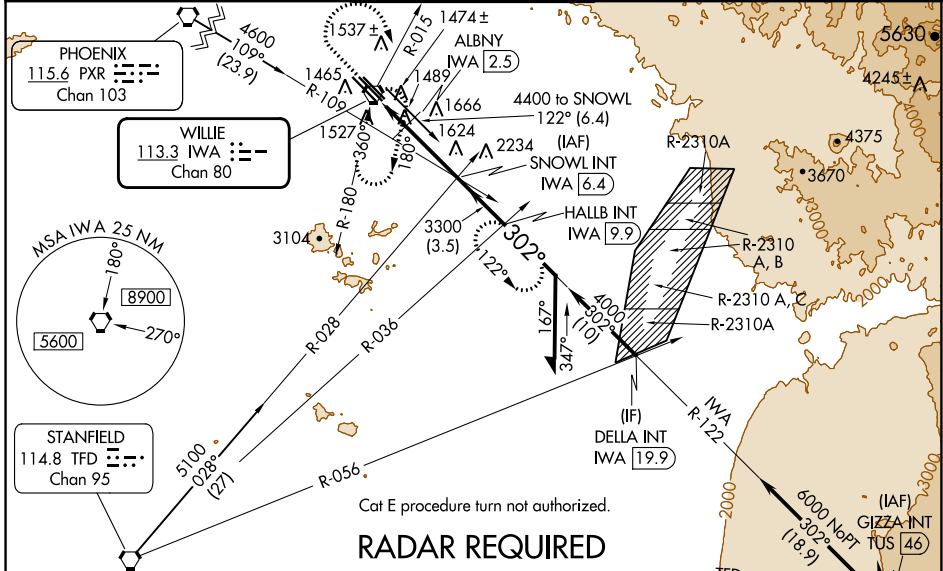
# VOR or TACAN RWY 30C

PHOENIX-MESA GATEWAY (IWA)

**⚠** When local altimeter setting not received, use Phoenix Sky Harbor Intl altimeter setting and increase all MDA 80 feet, increase S-30C, SIDESTEP 30R, and Circling Cats C/D/E visibility ¼ SM.

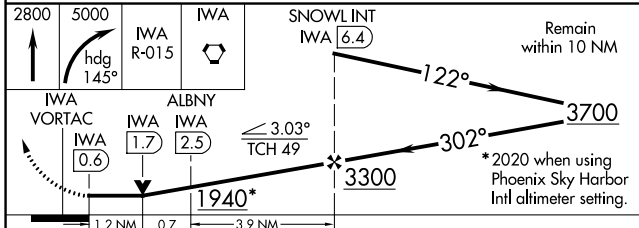
**MISSED APPROACH:** Climb to 2800 then climbing right turn to 5000 via heading 145° and IWA VORTAC R-015 to IWA VORTAC and hold, continue climb-in-hold to 5000 (TACAN aircraft continue via IWA VORTAC R-122 to HALLB INT/IWA 9.9 DME and hold, continue climb-in-hold to 5000, hold SE, LT, 302° inbound).

ATIS ★ <b>133.5 270.275</b>	PHOENIX APP CON <b>124.9 353.8</b>	GATEWAY TOWER ★ <b>120.6 (CTAF) 289.4</b>	GND CON <b>128.25 275.8</b>	CLNC DEL <b>135.05</b>
--------------------------------	---------------------------------------	--	--------------------------------	---------------------------

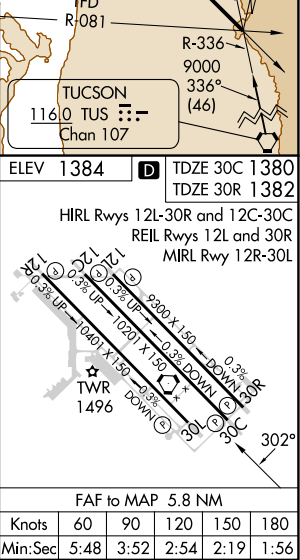


Cat E procedure turn not authorized.

**RADAR REQUIRED**



CATEGORY	A		B		C	D	E
	S-30C	1940-1	560 (600-1)	1940-1½	560 (600-1½)	1940-1¾	560 (600-1¾)
SIDESTEP 30R	1940-1	558 (600-1)	1940-1½	558 (600-1½)	1940-2	558 (600-2)	558 (600-2)
CIRCLING	1940-1	556 (600-1)	1940-1½	556 (600-1½)	2000-2	616 (700-2)	2020-2¼ 636 (700-2¼)
DME MINIMUMS							
S-30C	1800-1	420 (500-1)	1800-1¼	420 (500-1¼)	1800-1½	420 (500-1½)	1800-1½
SIDESTEP 30R	1800-1	418 (500-1)	1800-1½	418 (500-1½)	1800-2	418 (500-2)	418 (500-2)
CIRCLING	1880-1	496 (500-1)	1880-1½	496 (500-1½)	2000-2	616 (700-2)	2020-2¼ 636 (700-2¼)



SW-4, 28 NOV 2024 to 26 DEC 2024

SW-4, 28 NOV 2024 to 26 DEC 2024