

CHARLESTON, SOUTH CAROLINA

# HI-VOR Z or TACAN Z RWY 15

VORTAC CHS <b>113.5</b> Chan <b>82</b>	APCH CRS <b>157°</b>	Rwy Idg TDZE Arpt Elev <b>9001</b> <b>43</b> <b>46</b>
--	-------------------------	---

[USAF]

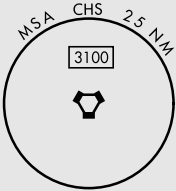
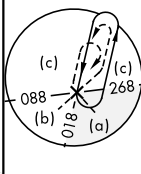
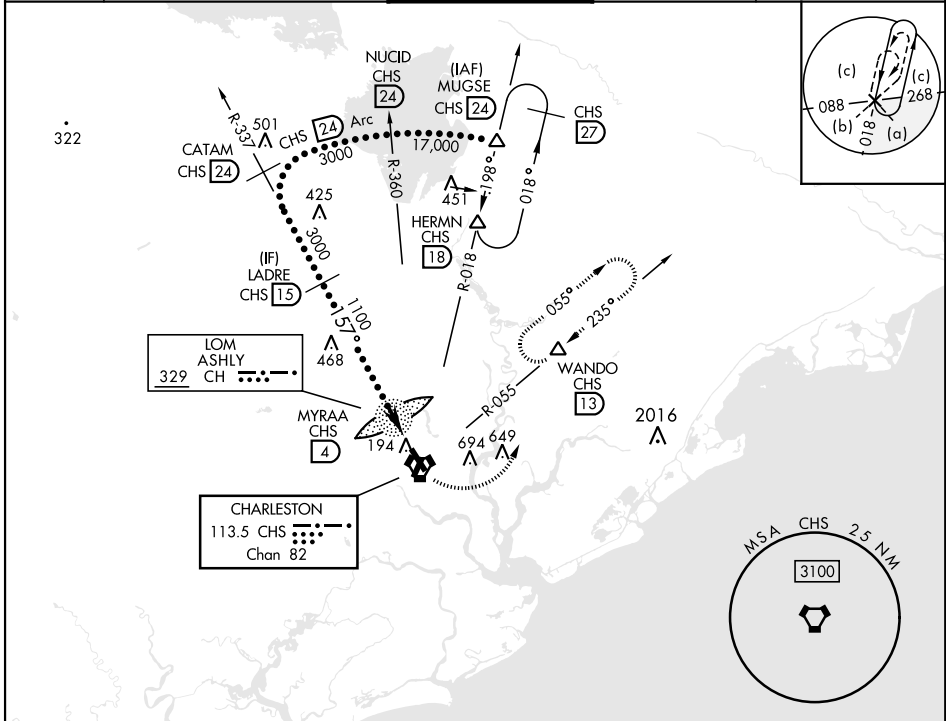
CHARLESTON AFB/INTL (KCHS)

DME required



MISSED APPROACH: Climb to 500 then climbing left turn to 3500 on CHS VORTAC R-055 to WANDO/CHS 13 DME and hold, continue climb-in-hold to 3500.

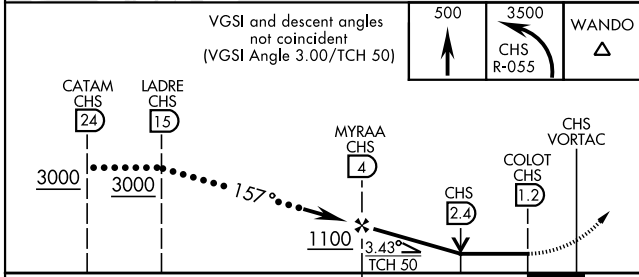
ATIS <b>124.75</b>	APP CON <b>120.7 306.925</b> (151° - 330°) <b>121.275 379.925</b> (331° - 150°)	TOWER <b>126.0 239.0</b>	GND CON <b>121.9 348.6</b>	CLNC DEL <b>127.325 291.65</b>
-----------------------	---	-----------------------------	-------------------------------	-----------------------------------



SE-2, 28 NOV 2024 to 26 DEC 2024

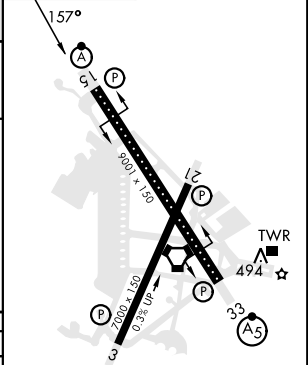
SE-2, 28 NOV 2024 to 26 DEC 2024

EMERG SAFE ALT 100 NM 3200



ELEV	46	TDZE	43
------	----	------	----

CATEGORY	C	D	E
S-15*	460/40	417	(500-3)
CIRCLING	540-1½ 494 (500-1½)	740-2¼ 694 (700-2¼)	740-2½ 694 (700-2½)



HIRL all rwys  
REIL Rwys 3 and 21  
TDZL/CL Rwy 15

CHARLESTON, SOUTH CAROLINA

32°54'N-80°02'W

CHARLESTON AFB/INTL (KCHS)

Amdt 4B 31OCT24

# HI-VOR Z or TACAN Z RWY 15