


LOC I-CCI 108.9	APP CRS 334°	Rwy Idg TDZE Apt Elev	9001 45 46
---------------------------	------------------------	-----------------------------	---------------------------------------

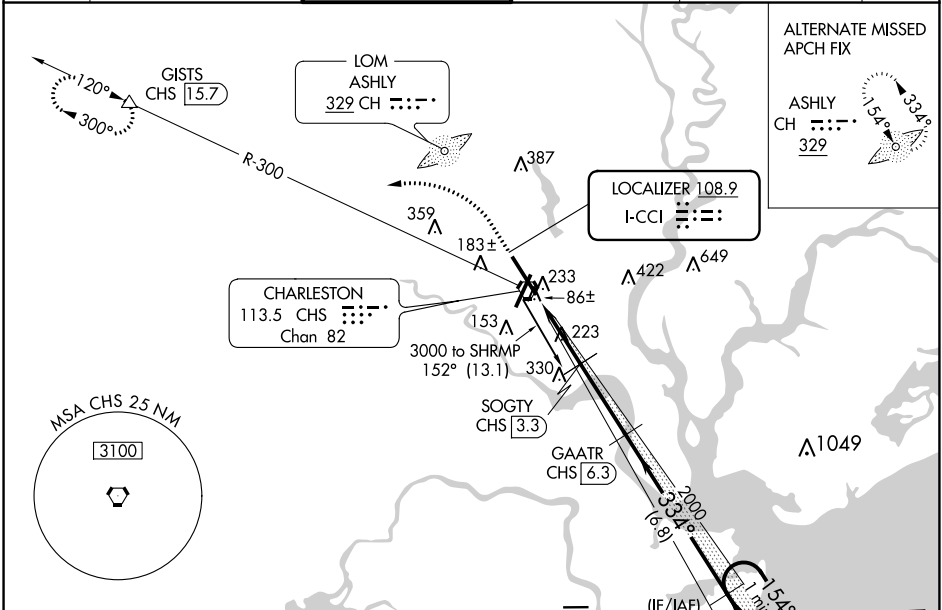
ILS or LOC RWY 33


CHARLESTON AFB/INTL (CHS)

⚠ DME from CHS VORTAC. Simultaneous reception of I-CCI and CHS DME required. DME required. For inop MALS/R, increase S-ILS 33 Cat E visibility to RVR 4000 and S-LOC 33 Cat E visibility to 1 3/8.
****** RVR 1800 authorized with use of FD or AP or HUD to DA.

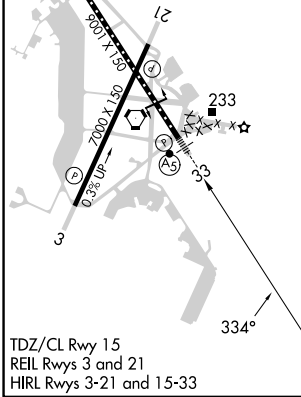
MALS/R

MISSED APPROACH: Climb to 500 then climbing left turn to 2100 on heading 280° and on CHS VORTAC R-300 to GISTS/15.7 DME and hold.

D-ATIS 124.75	CHARLESTON APP CON 120.7 306.925	CHARLESTON TOWER 126.0 239.0	GND CON 121.9 348.6	CLNC DEL 127.325 291.65	CPDLC
-------------------------	--	--	-------------------------------	-----------------------------------	-------



ALTERNATE MISSED APCH FIX
 ASHLY CH 329


ELEV 46	TDZE 45
---------	---------



500	2100	CHS R-300	GISTS	GAATR CHS [6.3]	SHRMP CHS [13.1] RADAR	One Minute Holding Pattern
↑	hdg 280°					GS 3.00° TCH 51
*LOC only.						
		*CHS [1.5]	SOGTY CHS [3.3]	2000	334°	154°
		CHS [0.3]		1040*	2000	3000
VGSi and ILS glidepath not coincident (VGSi Angle 3.00/TCH 59).						
1.2 NM		1.8 NM	3 NM	6.8 NM		
CATEGORY	A	B	C	D	E	
S-ILS 33 **	245/24			200 (200-1/2)		
S-LOC 33	480/24	435 (500-1/2)	480/45			435 (500-3/8)
CIRCLING	540-1	494 (500-1)	540-1 1/2	740-2 1/4	740-2 1/2	694 (700-2 1/4) 694 (700-2 1/2)

SE-2, 28 NOV 2024 to 26 DEC 2024

SE-2, 28 NOV 2024 to 26 DEC 2024