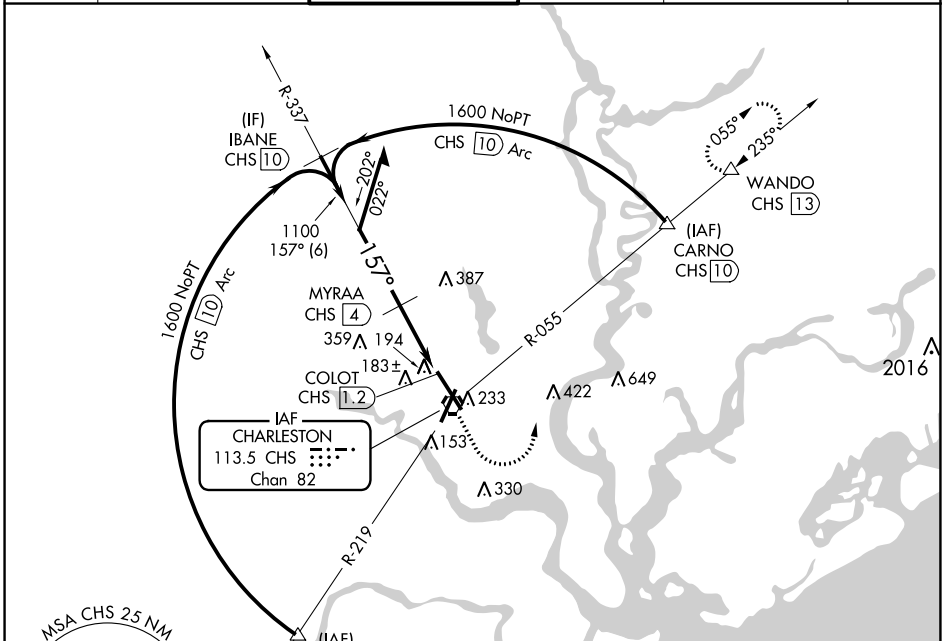


VORTAC CHS 113.5 Chan 82	APP CRS 157°	Rwy Idg 9001 TDZE 43 Apt Elev 46
--	------------------------	---

VOR Y or TACAN Y RWY 15

CHARLESTON AFB/INTL (CHS)

DME required.		ALSf-2	MISSED APPROACH: Climb to 500 then climbing left turn to 3500 on CHS VORTAC R-055 to WANDO/CHS 13 DME and hold, continue climb-in-hold to 3500.		
For inop ALS, increase S-15 Cat A/B visibility to RVR 5500 and Cat C/D visibility to RVR 6000.					
D-ATIS 124.75	CHARLESTON APP CON 120.7 306.925	CHARLESTON TOWER 126.0 239.0	GND CON 121.9 348.6	CLNC DEL 127.325 291.65	CPDLC



SE-2, 28 NOV 2024 to 26 DEC 2024

SE-2, 28 NOV 2024 to 26 DEC 2024

ELEV 46 TDZE 43	
Remain within 10 NM	CHS VORTAC 500 3500 WANDO CHS R-055
VGSi and descent angles not coincident (VGSi Angle 3.00°/TCH 50).	
CATEGORY	A B C D
S-15	460/24 417 (500-½) 460/40 417 (500-¾)
CIRCLING	540-1 494 (500-1) 540-1½ 740-2¼ 494 (500-1½) 694 (700-2¼)
TDZ/CL Rwy 15 REIL Rws 3 and 21 HIRL Rws 3-21 and 15-33	