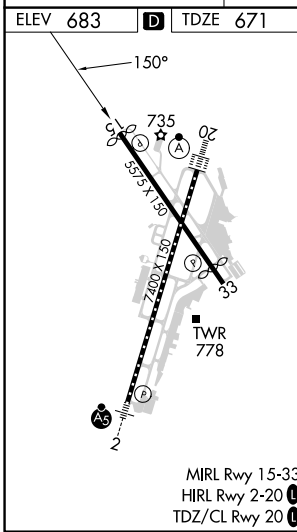
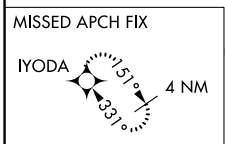
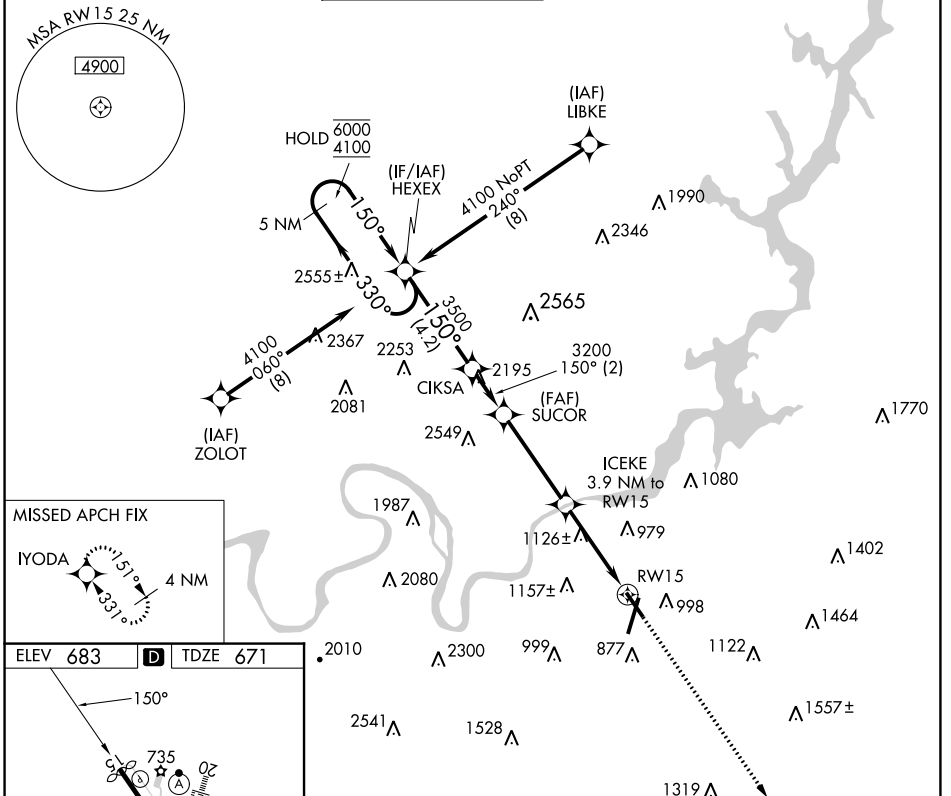


APP CRS	Rwy Idg	5469
150°	TDZE	671
	Apt Elev	683

RNAV (GPS) RWY 15

LOVELL FLD (CHA)

RNP APCH - GPS.		MISSED APPROACH: Climb to 3300 direct IYODA and hold.			
Straight-In Rwy 15 NA at night, Circling Rwy 15, 33 NA at night. Rwy 15 helicopter visibility reduction below 1 SM NA.		ATIS		CLNC DEL	UNICOM
119.85		CHATTANOOGA APP CON * 125.1 379.1		CHATTANOOGA TOWER * 118.3 (CTAF) 257.8	
		GND CON 121.7 348.6		120.95 348.6	
				122.95	



5 NM Holding Pattern	HEXEX	CIKSA	SUCOR	ICEKE	IYODA
6000 ← 330°	4100 → 150°	150°	3200	3.9 NM to RWY 15	3300
				3.00° TCH 45	1960
		4.2 NM	2 NM	3.9 NM	3.9 NM
CATEGORY	A	B	C	D	
LNAV MDA	1380-1	709 (700-1)	1380-2	709 (700-2)	
CIRCLING	1380-1	697 (700-1)	1480-2¼ 797 (800-2¼)	1580-3 897 (900-3)	

SE-1, 28 NOV 2024 to 26 DEC 2024

SE-1, 28 NOV 2024 to 26 DEC 2024