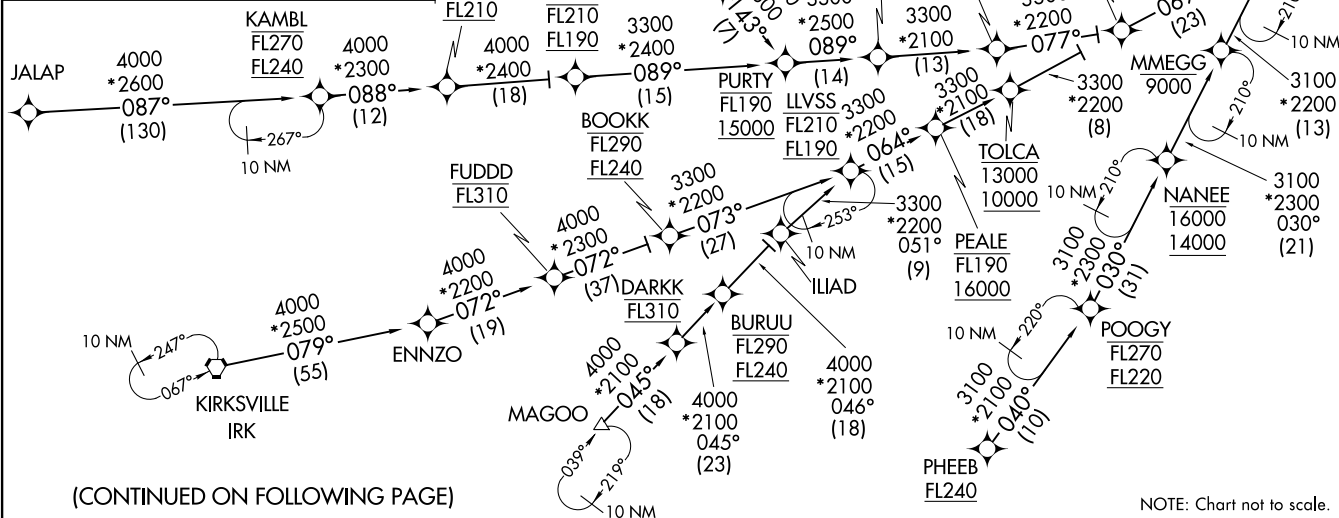


ENDEE SIX ARRIVAL (RNAV) Transition Routes
(ENDEE. ENDEE6) 31DEC20

- CHUMP TRANSITION (CHUMP.ENDEE6)
- DARKK TRANSITION (DARKK.ENDEE6)
- EDENS TRANSITION (EDENS.ENDEE6)
- FUDD TRANSITION (FUDD.ENDEE6)
- JALAP TRANSITION (JALAP.ENDEE6)
- KAMBL TRANSITION (KAMBL.ENDEE6)
- KIRKSVILLE TRANSITION (IRK.ENDEE6)
- LLVSS TRANSITION (LLVSS.ENDEE6)
- MAGOO TRANSITION (MAGOO.ENDEE6)
- NANEE TRANSITION (NANEE.ENDEE6)
- OHHMY TRANSITION (OHHMY.ENDEE6)
- PHEEB TRANSITION (PHEEB.ENDEE6)
- POOGY TRANSITION (POOGY.ENDEE6)
- UGGLY TRANSITION (UGGLY.ENDEE6)



(CONTINUED ON FOLLOWING PAGE)

NOTE: Chart not to scale.

NOTE: RADAR required.
 NOTE: RNAV 1.
 NOTE: DME/DME/IRU or GPS required.
 NOTE: DARKK, FUDD, NANEE, LLVSS, CHUMP, EDENS, and POOGY transitions: ATC assigned only.

D-ATIS
 132.75
 CHICAGO APP CON
 128.2 353.875

See following page for Arrival Routes.
ENDEE
 7000 250K
 6000

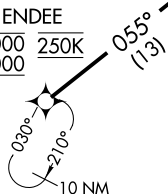
(ENDEE. ENDEE6) 20366
 ENDEE SIX ARRIVAL (RNAV) Transition Routes
 AL-81 (FAA)
 CHICAGO MIDWAY INTL (MDW)
 CHICAGO, ILLINOIS

CHICAGO, ILLINOIS
CHICAGO MIDWAY INTL (MDW)

ENDEE SIX ARRIVAL (RNAV) Arrival Routes
(ENDEE. ENDEE6) 31 DEC 20

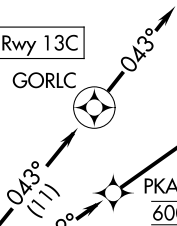
D-ATIS
132.75
CHICAGO APP CON
128.2 353.875

ENDEE
7000 250K
6000



KMDW ldg Rwy 13C

GORLC



PKACH
6000

ALQUE
6000

KMDW ldg Rwy 4R

WNNRS
(7)

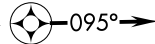
GAGGA

KMDW ldg Rwy 31C

TUURN

090°
(6)

WADLL KMDW ldg Rwy 22L



NOTE: RADAR required.
NOTE: RNAV 1.
NOTE: DME/DME/IRU or GPS required.



(ENDEE. ENDEE6) 20366
ENDEE SIX ARRIVAL (RNAV) Arrival Routes

AL-81 (FAA)

ARRIVAL ROUTE DESCRIPTION

From ENDEE on track 055° to cross STKNY at 6000.

LANDING RWY 4R: From STKNY on track 077° to cross ALQUE at 6000, then on track 047°.

Expect ILS or LOC RWY 4R approach or RADAR vectors to final approach course.

LANDING RWY 13C: From STKNY on track 043° to GORLC, then on track 043°.

Expect RADAR vectors to final approach course.

LANDING RWY 22L: From STKNY on track 062° to cross PKACH at 6000, then on track 062°

to TUURN, then on track 090° to WADLL, then on track 095°. Expect RADAR vectors to final approach course.

LANDING RWY 31C: From STKNY on track 087° to WNNRS, then on track 087° to GAGGA, then on track 091°.

Expect RADAR vectors to final approach course.

NOTE: Chart not to scale.

CHICAGO, ILLINOIS
CHICAGO MIDWAY INTL (MDW)