

LOC/DME I-HKH 111.5 Chan 52	APP CRS 047°	Rwy Idg TDZE 619 Apt Elev 620
---	------------------------	---

ILS or LOC RWY 4R

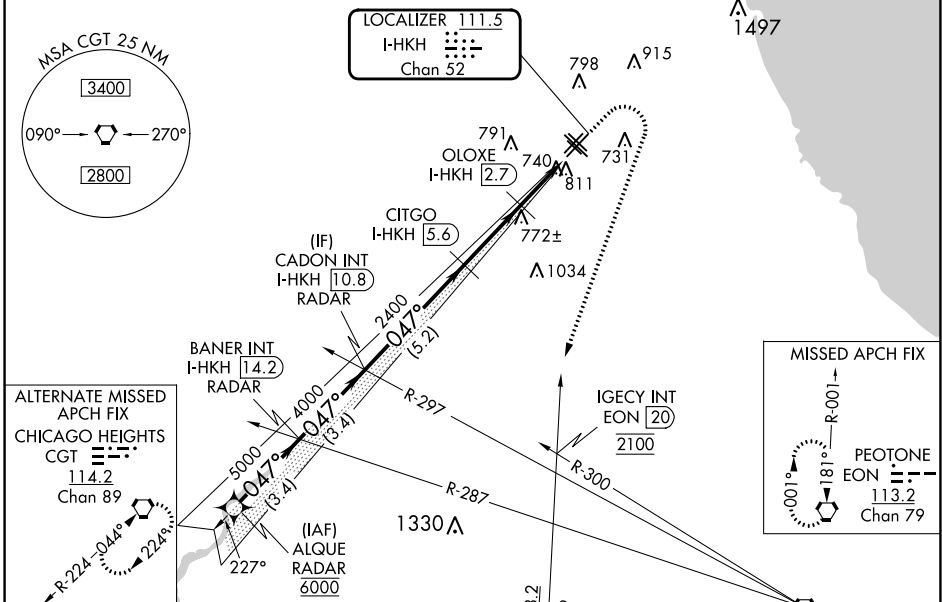
CHICAGO MIDWAY INTL (MDW)

RNAV 1-GPS or RADAR required for procedure entry. DME required for LOC only.

▼ Circling Rwy 31R NA at night.
▲ Rwy 4R helicopter visibility reduction below RVR 4000 NA.

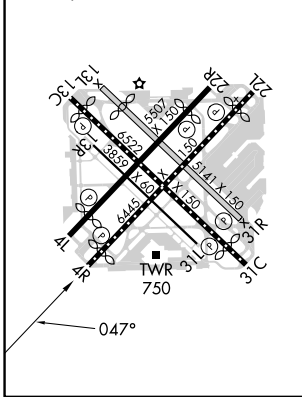
MISSED APPROACH: Climb to 1100 then climbing right turn to 2100 on heading 230° and on EON VORTAC R-001 until crossing IGEVY INT/EON 20 DME, then climb to 2600 to EON VORTAC and hold.

D-ATIS 132.75	CHICAGO APP CON 128.2 353.875	MIDWAY TOWER 135.2 269.125	GND CON 118.075	CLNC DEL 124.625	CPDLC
-------------------------	---	--------------------------------------	---------------------------	----------------------------	-------



ELEV 620	D	TDZE 619
----------	----------	----------

HIRL Rws 4R-22L and 13C-31C
 MIRL Rws 4L-22R, 13L-31R, and 13R-31L
 REIL Rws 4R, 22L, and 31C
 RLLS Rws 13C and 31C



VGSI and ILS glidepath not coincident (VGSI Angle 3.00/TCH 66).

ALQUE RADAR	BANER INT I-HKH [14.2] RADAR	CADON INT I-HKH [10.8] RADAR	CITGO I-HKH [5.6] OLOXE I-HKH [2.7]	1100	2100	2600	EON
				↑	hdg 230° EON R-001	↑	IGEY INT
6000	5000	4000	2400				*LOC only
GS 3.00° TCH 50			*1460				
	3.4 NM	3.4 NM	5.2 NM	2.9 NM	1.5 NM	1 NM	
CATEGORY	A	B	C	D			
S-ILS 4R	869/40	250 (300-¾)	869/50	250 (300-1)			
S-LOC 4R	1000/55	381 (400-1)	1000/60	381 (400-1¼)			
C CIRCLING	1120-1	500 (500-1)	1340-2 720 (800-2)	1340-2¼ 720 (800-2¼)			

EC-3, 28 NOV 2024 to 26 DEC 2024

EC-3, 28 NOV 2024 to 26 DEC 2024