

CHICAGO APP CON
128.2 353.875
GY Y ATIS
134.575
MDW D-ATIS
132.75

DAVENPORT
113.8 CVA
Chan 85

DIPSY
VERTICAL NAVIGATION
PLANNING INFORMATION
Jet expect 15000.
Turboprop expect 13000.

JOLIET
112.3 JOT
Chan 70
Ldg MDW and GYY

CHICAGO
MIDWAY INTL

GARY/CHICAGO INTL

BRADFORD
114.7 BDF
Chan 94

RENZO
VERTICAL NAVIGATION
PLANNING INFORMATION
Jet expect 15000.
Turboprop expect 13000.

MOTIF
VERTICAL NAVIGATION
PLANNING INFORMATION
Expect 10000.

MINOK
VERTICAL NAVIGATION
PLANNING INFORMATION
Expect 6000.

PEOTONE
113.2 EON
Chan 79

LAMONI
116.7 LMN
Chan 114

KORTT
VERTICAL NAVIGATION
PLANNING INFORMATION
Jet expect 17000.
Turboprop expect 13000.

5000
085°
(49)

PONTIAC
109.6 PNT
Chan 33

13000
072°
(192)

FL180
069°
(132)

PEORIA
115.2 PIA
Chan 99

5000
034°
(110)

YEAR
VERTICAL NAVIGATION
PLANNING INFORMATION
Jet expect 17000.
Turboprop expect 13000.

KIRKSVILLE
114.6 IRK
Chan 93

MAGOO

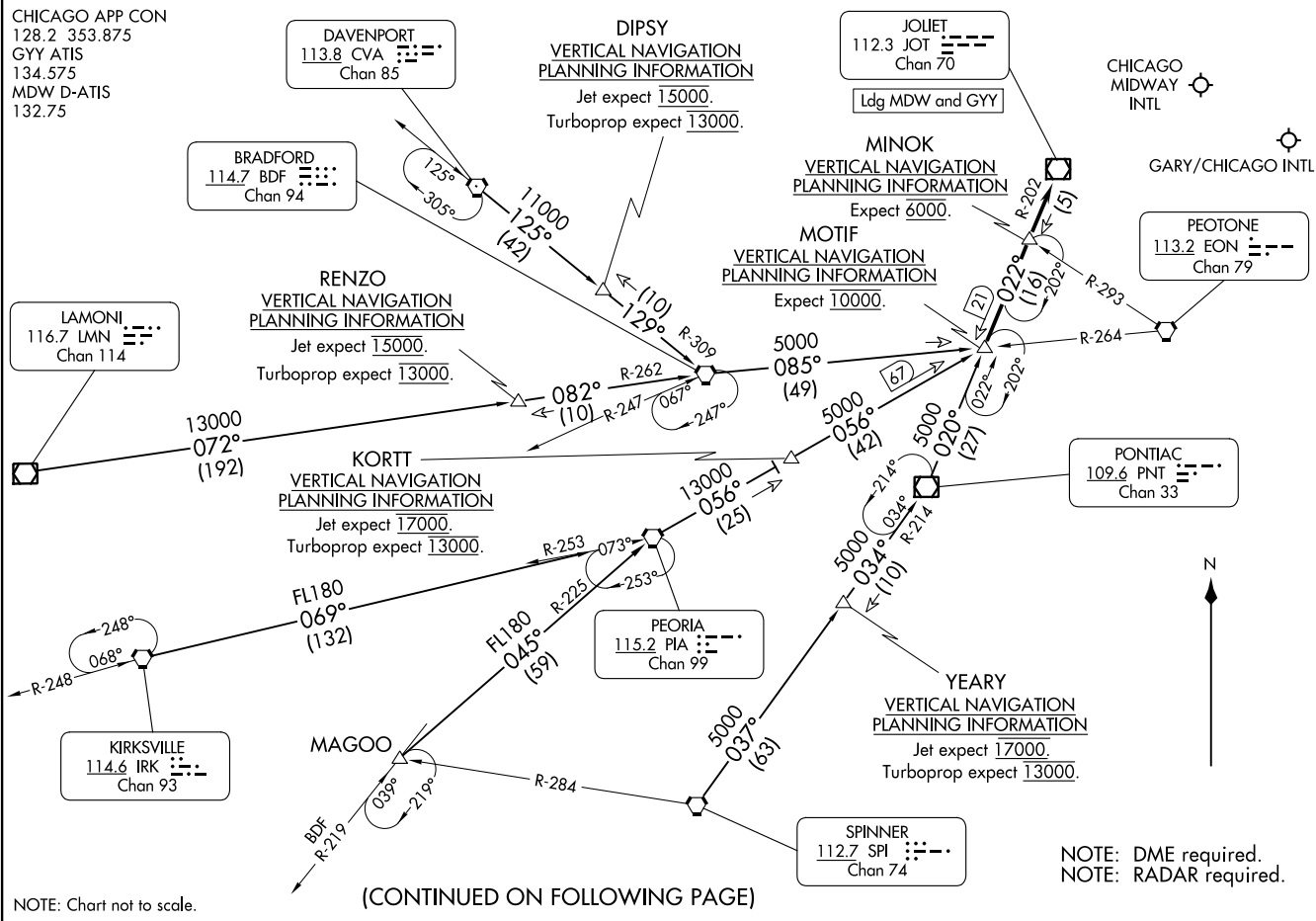
FL180
045°
(159)

SPINNER
112.7 SPI
Chan 74

NOTE: DME required.
NOTE: RADAR required.

NOTE: Chart not to scale.

(CONTINUED ON FOLLOWING PAGE)



ARRIVAL ROUTE DESCRIPTION

BRADFORD TRANSITION (BDF.MOTIF7): From over BDF VORTAC on BDF R-085 to MOTIF INT. Thence....

DAVENPORT TRANSITION (CVA.MOTIF7): From over CVA VORTAC on CVA R-125 and BDF R-309 to BDF VORTAC, then on BDF R-085 to MOTIF INT. Thence....

KIRKSVILLE TRANSITION (IRK.MOTIF7): From over IRK VORTAC on IRK R-069 and PIA R-253 to PIA VORTAC, then on PIA R-056 to MOTIF INT. Thence....

LAMONI TRANSITION (LMN.MOTIF7): From over LMN VOR/DME on LMN R-072 and BDF R-262 to BDF VORTAC, then on BDF R-085 to MOTIF INT. Thence....

MAGOO TRANSITION (MAGOO.MOTIF7): From over MAGOO INT on PIA R-225 to PIA VORTAC, then on PIA R-056 to MOTIF INT. Thence....

PEORIA TRANSITION (PIA.MOTIF7): From over PIA VORTAC on PIA R-056 to MOTIF INT. Thence....

PONTIAC TRANSITION (PNT.MOTIF7): From over PNT VOR/DME on PNT R-020 to MOTIF INT. Thence....

SPINNER TRANSITION (SPI.MOTIF7): From over SPI VORTAC on SPI R-037 and PNT R-214 to PNT VOR/DME, then on PNT R-020 to MOTIF INT. Thence....

....from over MOTIF INT on JOT R-202 to JOT VOR/DME. Expect vector to final approach course.

EC-3, 28 NOV 2024 to 26 DEC 2024

EC-3, 28 NOV 2024 to 26 DEC 2024