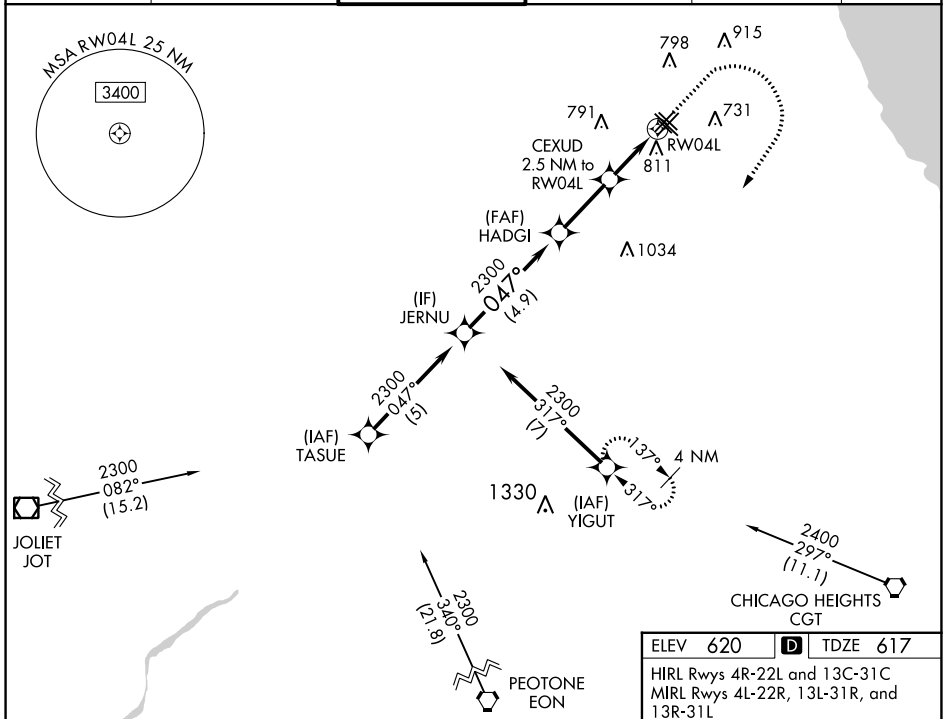


WAAS CH <b>97741</b> <b>W04B</b>	APP CRS <b>047°</b>	Rwy Idg <b>4749</b> TDZE <b>617</b> Apt Elev <b>620</b>
--	------------------------	---

# RNAV (GPS) RWY 4L

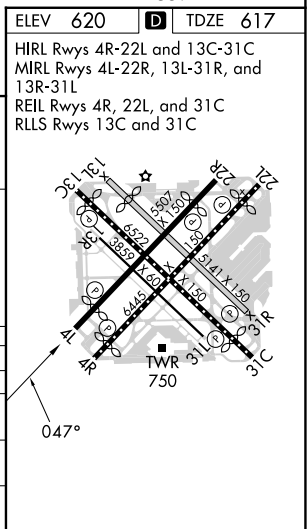
CHICAGO MIDWAY INTL (MDW)

RNP APCH.				MISSED APPROACH: Climb to 1100 then climbing right turn to 2400 direct YIGUT and hold.	
▼ Circling to Rwy 31R NA at night. ▲ For uncompensated Baro-VNAV systems, LNAV/VNAV NA below -19°C or above 54°C. Rwy 4L helicopter visibility reduction below 3/4 SM NA.	D-ATIS <b>132.75</b>	CHICAGO APP CON <b>128.2 388.0</b>	MIDWAY TOWER <b>135.2 269.125</b>	GND CON <b>118.075</b>	CLNC DEL <b>124.625</b>
					CPDLC



VGSI and RNAV glidepath not coincident (VGSI Angle 3.00/TCH 39).

JERNU	HADGI	CEXUD	YIGUT
2300	2300	2300	2400
GP 3.00° TCH 55	047°	1460	
4.9 NM	2.6 NM	1.2 NM	1.3 NM
*LNAV only.		*1.3 NM to RW04L	
CATEGORY	A	B	C
LPV DA		867-3/4	250 (300-3/4)
LNAV/VNAV DA		1021-1 1/8	404 (500-1 1/8)
LNAV MDA	1080-1	463 (500-1)	1080-1 3/8 463 (500-1 3/8)
CIRCLING	1120-1	500 (500-1)	1340-2 720 (800-2) 1340-2 1/4 720 (800-2 1/4)



EC-3, 28 NOV 2024 to 26 DEC 2024

EC-3, 28 NOV 2024 to 26 DEC 2024