

RNAV (GPS) RWY 3 CINCINNATI MUNI/LUNKEN FLD (LUK)

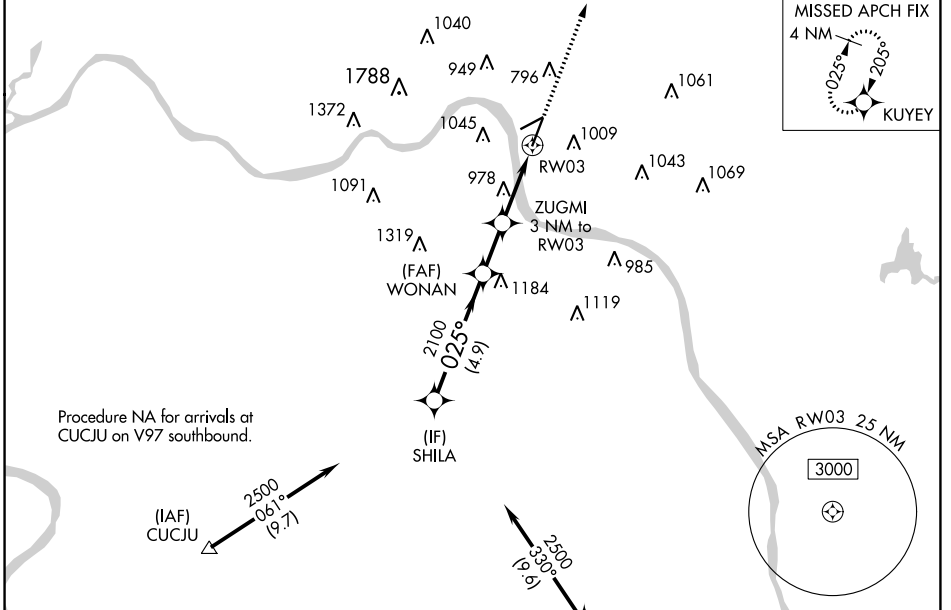
APP CRS	Rwy Idg	6101
025°	TDZE	481
	Apt Elev	482

RNP APCH-GPS.

▽
▲ Rwy 3 helicopter visibility reduction below $\frac{3}{4}$ SM NA.
Circling NA for Cat D north of Rwy 7-25. Circling Rwy 7 NA at night.

MISSED APPROACH: Climb to 2600 direct KUYEY and hold.

ATIS 123.6	CINCINNATI APP CON 121.0 254.25	LUNKEN TOWER ★ 118.7 (CTAF) 0 257.8	GND CON 121.9	CLNC DEL 121.9	CLNC DEL 124.9 (When twr closed)	UNICOM 122.95
----------------------	---	--	-------------------------	--------------------------	---	-------------------------



EC-2, 28 NOV 2024 to 26 DEC 2024

EC-2, 28 NOV 2024 to 26 DEC 2024

Procedure NA for arrivals at CUCJU on V97 southbound.

(IAF) CUCJU 2500 061° (9.7)

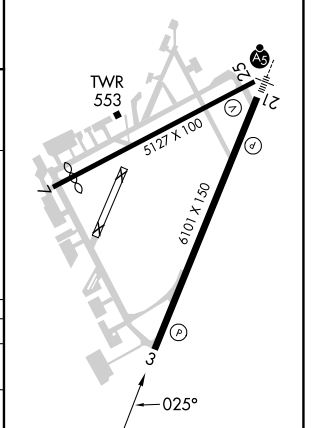
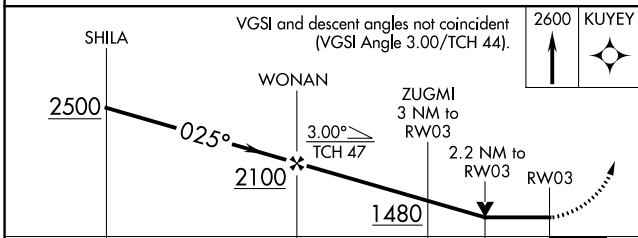
Procedure NA for arrivals at FLM VOR/DME on V517 southeast bound.

(IAF) LODL 2700 345° (10)

FALMOUTH FLM

ELEV 482	D TDZE 481
----------	-------------------

REIL Rwy 3
HIRL Rwy 3-21
MIRL Rwy 7-25



CATEGORY	A	B	C	D
LNVA MDA	1240-1 759 (800-1)	1240-1¼ 759 (800-1¼)	1240-2	759 (800-2)
CIRCLING	1260-1 778 (800-1)	1360-1¼ 878 (900-1¼)	1360-2½ 878 (900-2½)	1400-3 918 (1000-3)