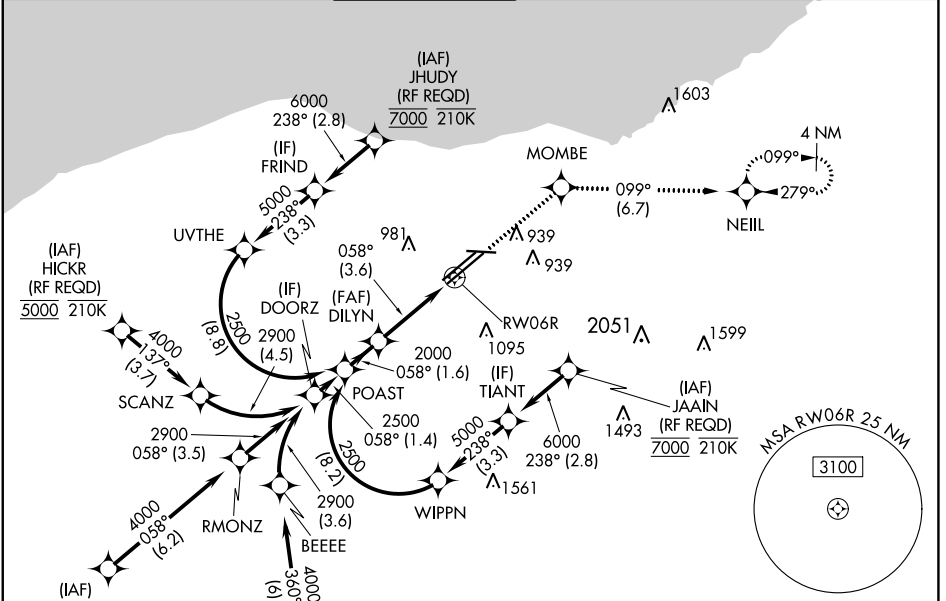


APP CRS	Rwy Idg	8029
058°	TDZE	777
	Apt Elev	799

RNAV (RNP) Z RWY 6R

CLEVELAND-HOPKINS INTL (CLE)

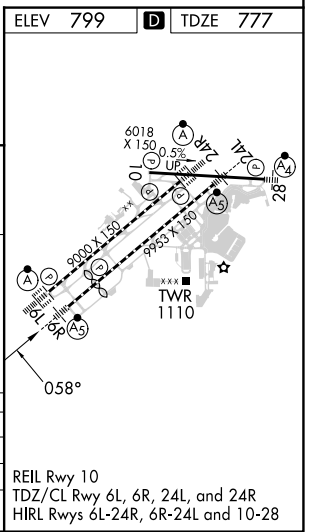
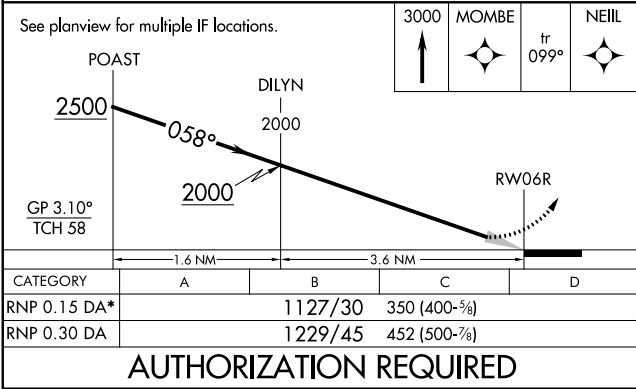
RNP AR APCH.			MALSR		MISSED APPROACH: Climb to 3000 direct MOMBE and on track 099° to NEILL and hold. *Missed approach requires minimum climb of 270 feet per NM to 1400.
For unconsented Baro-VNAV systems, procedure NA below -18°C (0°F) or above 46°C (114°F). For inop ALS, increase RNP 0.15 all Cots visibility to RVR 5500.					
D-ATIS	CLEVELAND APP CON	CLEVELAND TOWER	GND CON	CLNC DEL	CPDLC
ARR 127.85 DEP 132.375	126.55 346.325	124.5 273.45	121.7 273.45	125.05 273.45	



EC-2, 28 NOV 2024 to 26 DEC 2024

EC-2, 28 NOV 2024 to 26 DEC 2024

ELEV 799	D TDZE 777
----------	-------------------



AUTHORIZATION REQUIRED