

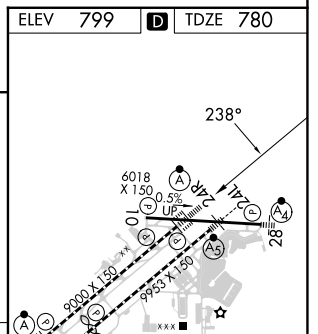
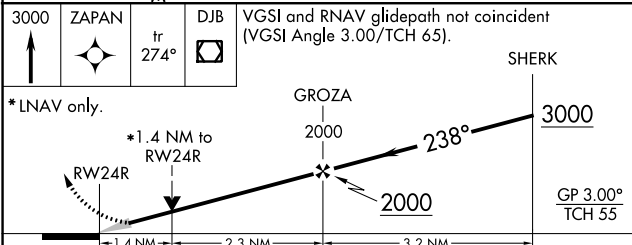
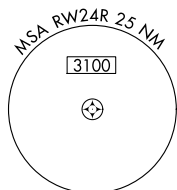
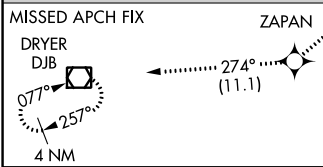
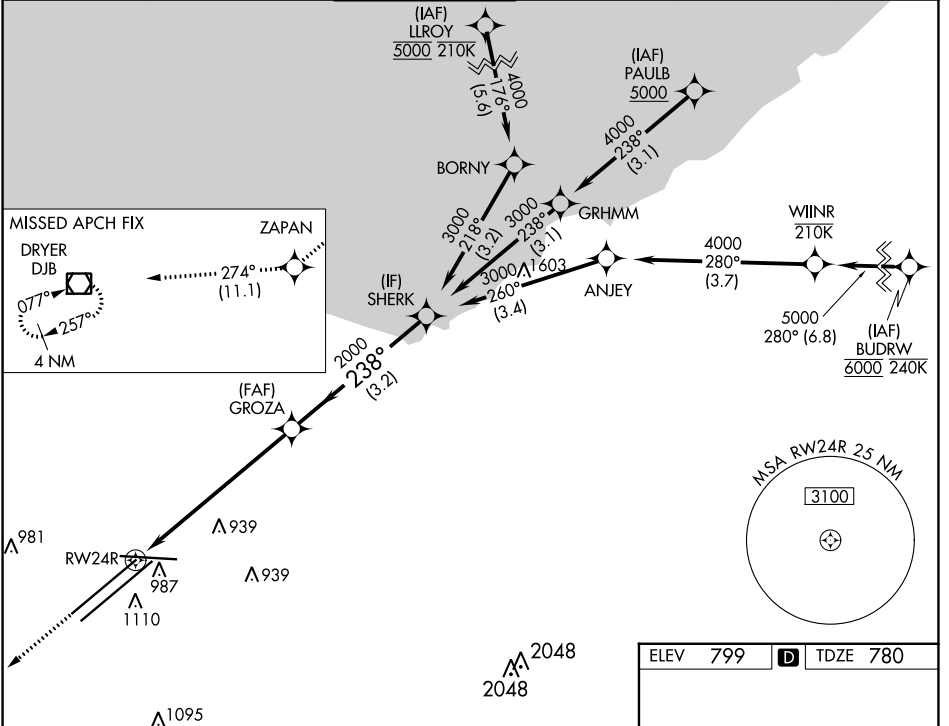
WAAS CH <b>60904</b> <b>W24A</b>	APP CRS <b>238°</b>	Rwy Idg TDZE <b>780</b> Apt Elev <b>799</b>	<b>9000</b> <b>780</b> <b>799</b>
--	------------------------	---	---

# RNAV (GPS) Y RWY 24R

CLEVELAND-HOPKINS INTL (CLE)

RNP APCH. ▼ Circling Rwy 10 NA at night. For uncompensated Baro-VNAV systems, LNAV/VNAV NA below -19°C or above 54°C.	ALSF-2 	MISSED APPROACH: Climb to 3000 direct ZAPAN and on track 274° to DJB VOR/DME and hold.
--	------------	--

D-ATIS ARR <b>127.85</b> DEP <b>132.375</b>	CLEVELAND APP CON <b>126.55 346.325</b>	CLEVELAND TOWER <b>124.5 273.45</b>	GND CON <b>121.7 273.45</b>	CLNC DEL <b>125.05 273.45</b>	CPDLC
---	--	--	--------------------------------	----------------------------------	-------



CATEGORY	A	B	C	D
LPV DA		980/18	200 (200-½)	
LNAV/VNAV DA		1168/35	388 (400-⅓)	
LNAV MDA	1240/24	460 (500-½)	1240/45	460 (500-⅓)
CIRCLING	1420-1	621 (700-1)	1420-1¾	621 (700-¾)

REIL Rwy 10  
TDZ/CL Rwy 6L, 6R, 24L and 24R  
HIRL Rwy 6R-24L, 6L-24R and 10-28

EC-2, 28 NOV 2024 to 26 DEC 2024

EC-2, 28 NOV 2024 to 26 DEC 2024