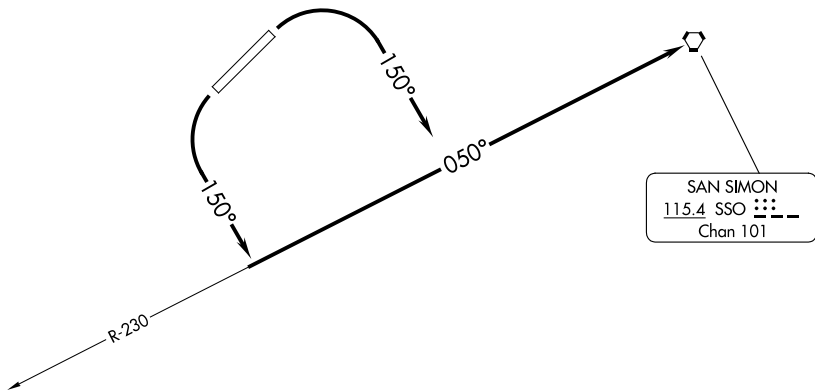


ALBUQUERQUE CENTER  
134.45 327.15



SW-4, 28 NOV 2024 to 26 DEC 2024

SW-4, 28 NOV 2024 to 26 DEC 2024

TAKEOFF MINIMUMS  
Rwys 3, 21: Standard.

TAKEOFF OBSTACLE NOTES

Rwy 3: Trees beginning 150' from DER, left and right of centerline, up to 31' AGL/4216' MSL.  
Rwy 21: Terrain beginning 64' from DER, left and right of centerline, up to 4190' MSL.

NOTE: Chart not to scale.

DEPARTURE ROUTE DESCRIPTION

TAKEOFF RUNWAY 3: Climbing right turn heading 150° to intercept SSO VORTAC R-230 to SSO VORTAC before proceeding on course.

TAKEOFF RUNWAY 21: Climbing left turn heading 150° to intercept SSO VORTAC R-230 to SSO VORTAC before proceeding on course.