

NDB RWY 35L

CITY OF COLORADO SPRINGS MUNI (COS)

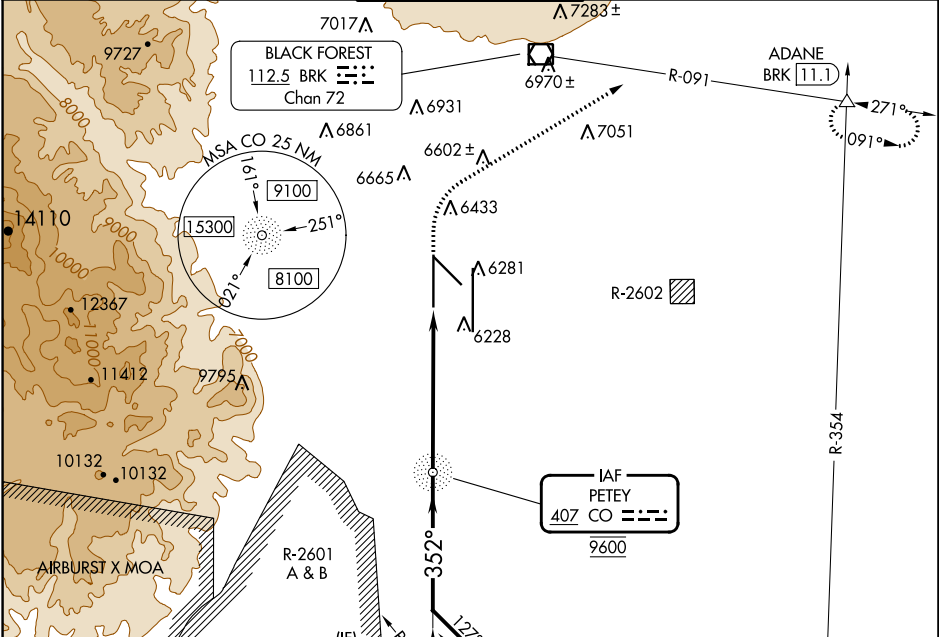
CO NDB 407	APP CRS 352°	Rwy Idg TDZE Apt Elev	11022 6075 6187
----------------------	------------------------	-----------------------------	--------------------------------------------

▼ RADAR monitoring required when R-2601 in use.
▲ For inop ALS, increase S-35L Cat A/B visibility RVR 5500, and Cat C/D to 1½ SM.

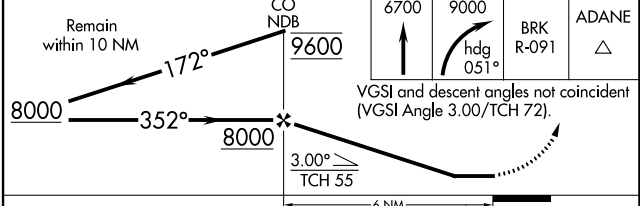
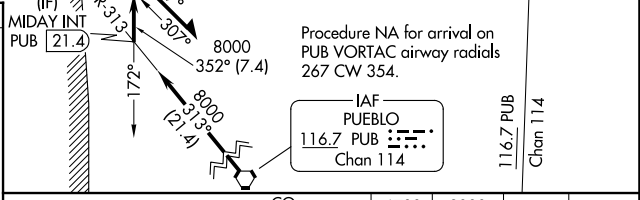
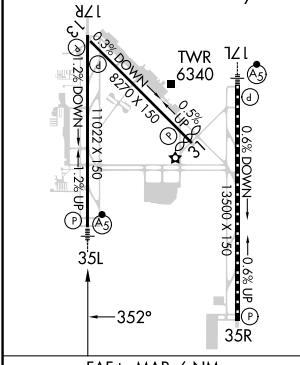


MISSED APPROACH: Climb to 6700 then climbing right turn to 9000 on heading 051° and on BRK VOR/DME R-091 to ADANE INT/BRK 11.1 DME and hold.

ATIS 125.0 254.3	SPRINGS APP CON 124.0 257.875	SPRINGS TOWER 119.9 360.6	GND CON 121.7 348.6	CLNC DEL 134.45 363.125
----------------------------	-----------------------------------------	-------------------------------------	-------------------------------	-----------------------------------



ELEV 6187 **D** TDZE 6075
 HIRL Rwy 17R-35L and 17L-35R
 REIL Rwy 13, 17R, 31 and 35R
 TDZ/CL Rwy 17L and 35R
 MIRL Rwy 13-31



CATEGORY	A	B	C	D
S-35L	6540/40	465 (400-¾)	6540/50	465 (400-1)
C CIRCLING	6740-1 553 (600-1)	6760-1 573 (600-1)	6980-2¼ 793 (800-2¼)	7240-3 1053 (1100-3)

SW-1, 28 NOV 2024 to 26 DEC 2024

SW-1, 28 NOV 2024 to 26 DEC 2024