

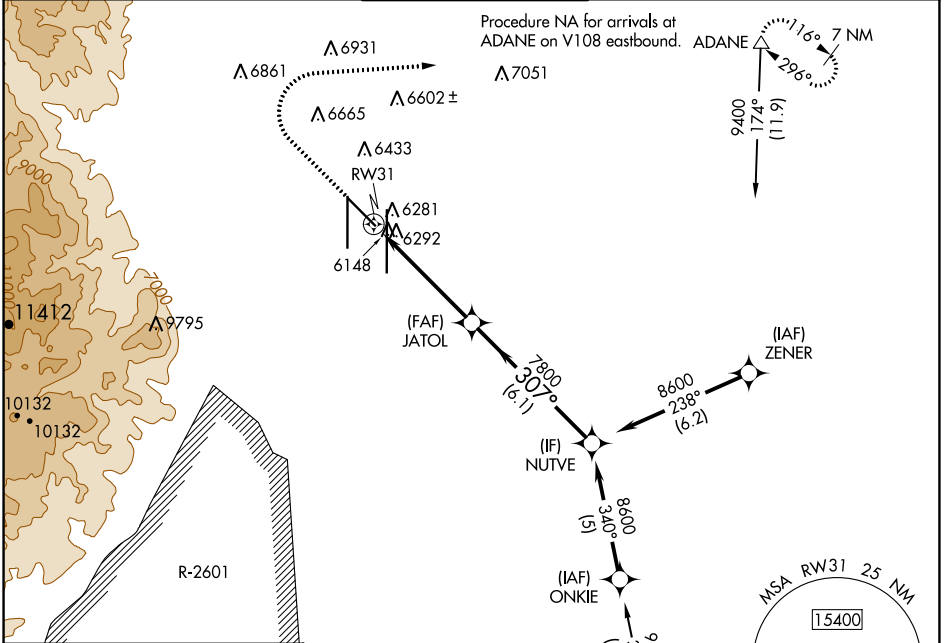
WAAS CH <b>40040</b> <b>W31A</b>	APP CRS <b>307°</b>	Rwy Idg TDZE Apt Elev	<b>7914</b> <b>6156</b> <b>6187</b>
--	------------------------	-----------------------------	---

# RNAV (GPS) RWY 31

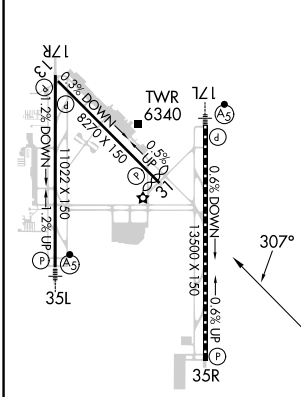
CITY OF COLORADO SPRINGS MUNI (COS)

DME/DME RNP-0.3 NA.		MISSED APPROACH: Climb to 6700 then climbing right turn to 9000 direct ADANE and hold.		
---------------------	--	--	--	--

ATIS <b>125.0 254.3</b>	SPRINGS APP CON <b>124.0 257.875</b>	SPRINGS TOWER <b>119.9 360.6</b>	GND CON <b>121.7 348.6</b>	CLNC DEL <b>134.45 363.125</b>
----------------------------	---	-------------------------------------	-------------------------------	-----------------------------------

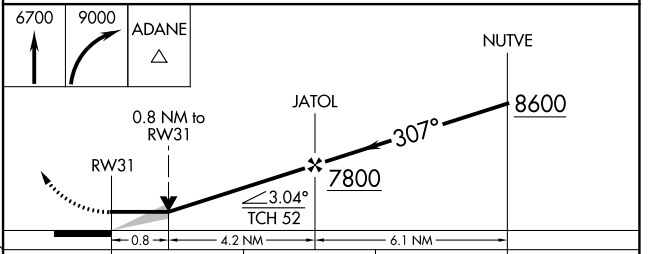


ELEV 6187	<b>D</b>	TDZE 6156
-----------	----------	-----------



MIRL Rwy 13-31  
HIRL Rwys 17R-35L and 17L-35R  
REIL Rwys 13, 17R, 31 and 35R  
TDZ/CL Rwys 17L and 35R

Procedure NA for arrivals on PUB VORTAC  
airway radials 267 CW 354.



CATEGORY	A	B	C	D
LP MDA	6440-1	284 (300-1)	6440-7/8	284 (300-7/8)
LNAV MDA	6560-1	404 (400-1)	6560-1 1/8	404 (400-1 1/8)
<b>C</b> CIRCLING	6740-1 553 (600-1)	6800-1 613 (700-1)	7040-2 1/2 853 (900-2 1/2)	7260-3 1073 (1100-3)

SW-1, 28 NOV 2024 to 26 DEC 2024

SW-1, 28 NOV 2024 to 26 DEC 2024