

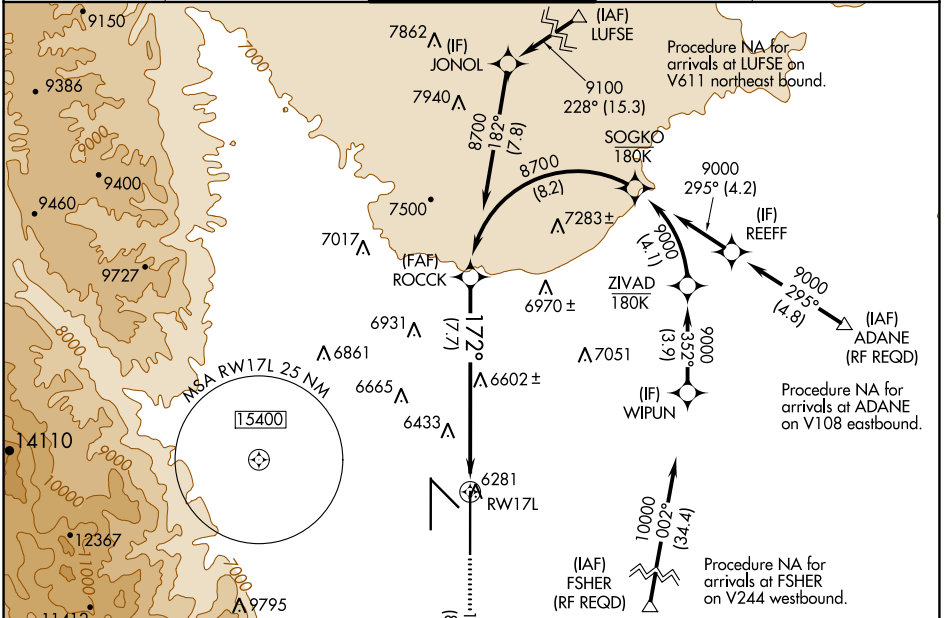
APP CRS 172°	Rwy Idg TDZE Apt Elev	13500 6187 6187
------------------------	-----------------------------	--------------------------------------------

RNAV (RNP) Z RWY 17L

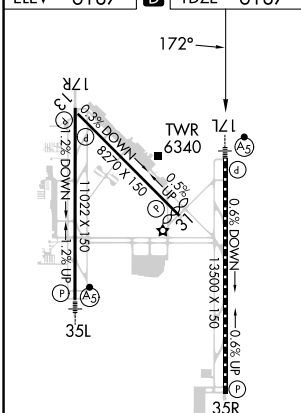
CITY OF COLORADO SPRINGS MUNI (COS)

RNP AR APCH - GPS.	MALSR	MISSED APPROACH: Climb to 9000 on track 172° to CEGIX and on track 130° to JEMKI and on track 084° to DRAKE and hold.
▼ For uncompensated Baro-VNAV systems, procedure NA below -21°C or above 44°C.		

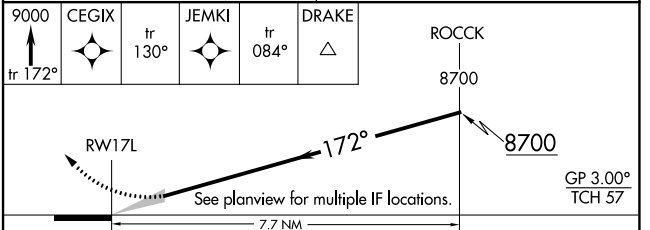
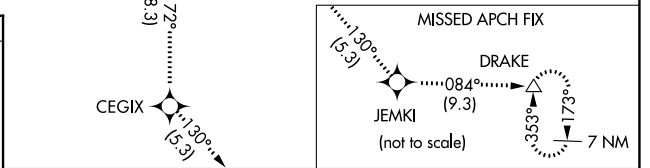
ATIS 125.0 254.3	SPRINGS APP CON 124.0 257.875	SPRINGS TOWER 119.9 360.6	GND CON 121.7 348.6	CLNC DEL 134.45 363.125
----------------------------	-----------------------------------------	-------------------------------------	-------------------------------	-----------------------------------



ELEV 6187	D	TDZE 6187
-----------	----------	-----------



MIRL Rwy 13-31
HIRL Rwys 17R-35L and 17L-35R
REIL Rwys 13, 17R, 31 and 35R
TDZ/CL Rwys 17L and 35R



CATEGORY	A	B	C	D
RNP 0.15 DA		6557/40	370 (400-3/4)	
RNP 0.25 DA		6644/50	457 (500-1)	
RNP 0.30 DA		6920-2	733 (800-2)	

AUTHORIZATION REQUIRED

SW-1, 28 NOV 2024 to 26 DEC 2024

SW-1, 28 NOV 2024 to 26 DEC 2024