

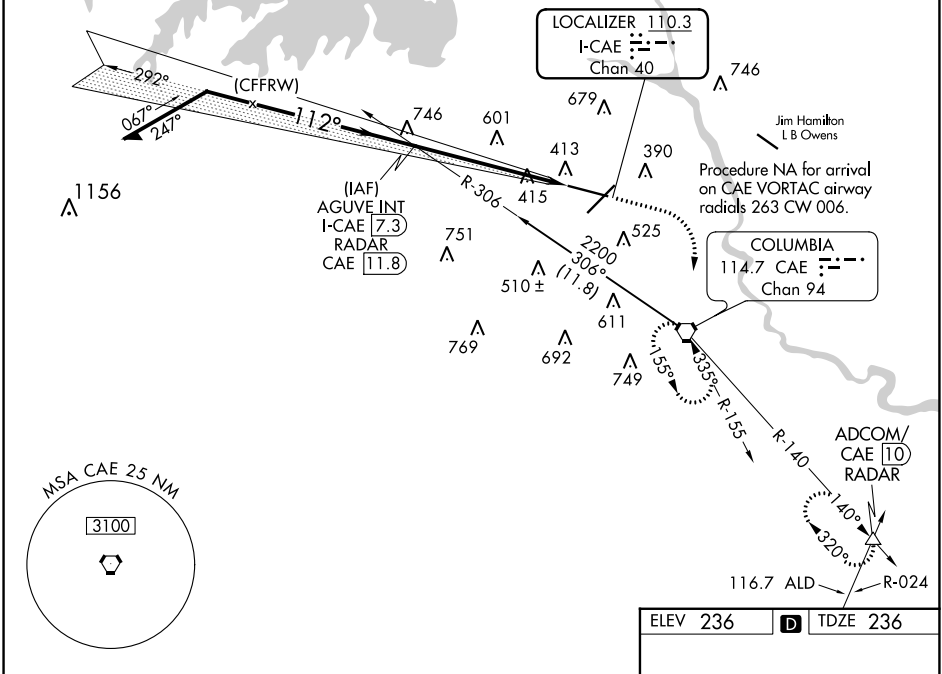
LOC/DME I-CAE 110.3 Chan 40	APP CRS 112°	Rwy Idg TDZE 236 Apt Elev 236	8601
--	------------------------	---	-------------

ILS RWY 11 (CAT II & III)

COLUMBIA METRO (CAE)

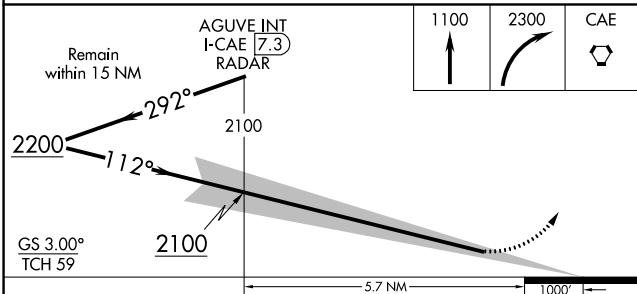
	MISSED APPROACH: Climb to 1100 then climbing right turn to 2300 direct CAE VORTAC and hold, continue climb-in-hold to 2300. (TACAN aircraft continue on CAE VORTAC R-140 to ADCOM INT/CAE VORTAC 10 DME and hold NW, right turn, 140° inbound)		

ATIS 120.15	COLUMBIA APP CON 133.4 285.6 (290°-109°) 124.15 338.2 (110°-289°)	COLUMBIA TOWER 119.5 257.8	GND CON 121.9 348.6	CLNC DEL 119.75
-----------------------	---	--------------------------------------	-------------------------------	---------------------------

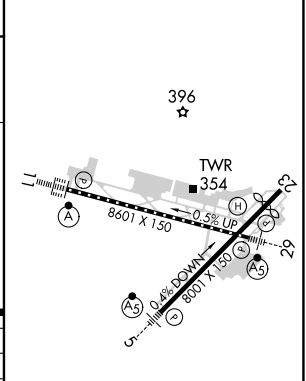


SE-2, 28 NOV 2024 to 26 DEC 2024

SE-2, 28 NOV 2024 to 26 DEC 2024



ELEV 236		TDZE 236
----------	--	----------



CATEGORY	A	B	C	D
S-ILS 11	CAT II RA 128/12 100 DA 336			
S-ILS 11	CAT III RVR 06			

CATEGORY II & III ILS-SPECIAL AIRCREW & AIRCRAFT CERTIFICATION REQUIRED

REIL Rwy 23
TDZ/CL Rwy 11
HIRL Rwy 5-23 and 11-29