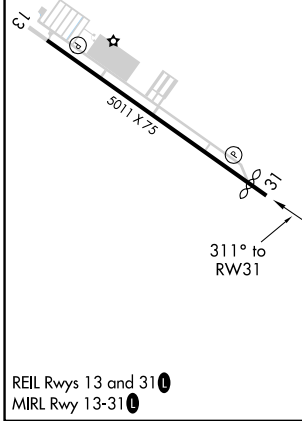
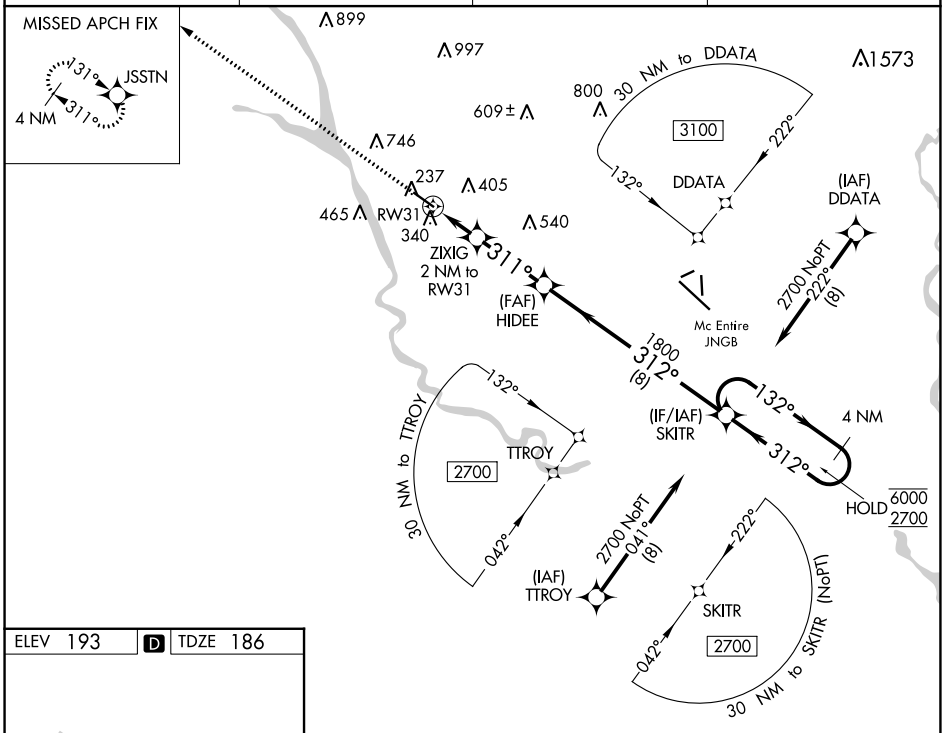


| | | | |
|--|------------------------|-----------------------------|---|
| WAAS CH 42742 W31A | APP CRS 311° | Rwy Idg TDZE Apt Elev | 4599 186 193 |
|--|------------------------|-----------------------------|---|

RNAV (GPS) RWY 31

JIM HAMILTON L B OWENS (CUB)

| | | | |
|---|--|---|-----------------------------------|
| RNP APCH. | | MISSED APPROACH: Climb to 2700 direct JSSTN and hold. | |
| ▼ Rwy 31 helicopter visibility reduction below ¾ SM NA. For uncompensated Baro-VNAV systems, LNAV/VNAV NA below -6°C or above 54°C. | | | |
| ASOS 118.675 | COLUMBIA APP CON 133.4 285.6 | CLNC DEL 124.4 | UNICOM 123.075 (CTAF) 0 |



| | | | |
|--------------|--|-------------|----------------------------|
| 2700 JSSTN | VGSi and RNAV glidepath not coincident (VGSi Angle 3.00/TCH 20). | | |
| *LNAV only. | ZIXIG 2 NM to RW31 | HIDEE 1800 | SKITR 4 NM Holding Pattern |
| RW31 | *1.4 NM to RW31 | 1800 | 6000/2700 |
| | 860* | 1800 | GP 3.00° TCH 40 |
| | 1.4 NM | 0.8 | 2.9 NM |
| | | | 8 NM |
| CATEGORY | A | B | C |
| LPV DA | 436-¾ | | 250 (300-¾) |
| LNAV/VNAV DA | 551-1 | | 365 (400-1) |
| LNAV MDA | 640-1 | 454 (500-1) | 640-1¾ 454 (500-1¾) |

SE-2, 28 NOV 2024 to 26 DEC 2024

SE-2, 28 NOV 2024 to 26 DEC 2024