

COLUMBUS, MISSISSIPPI

HI-ILS or LOC Z RWY 31C

LOC I-TBB
108.7

APCH CRS
315°

31C	31R
Rwy Ldg	12,004 8001
TDZE	213 218
Arprt Elev	218 218

AL-91 [USAF]

COLUMBUS AFB (KCBM)

▼ * When ALS inop, increase RVR to 40, vis to 3/4 mile.
 ** When ALS inop, increase vis to 1 1/4 mile.
 † When ALS inop, increase vis to 1 3/8 mile.



MISSED APPROACH: Climb heading 315° to intercept the VOR/TAC CBM R-315 outbound to KREEK (CBM R-315/20) and hold. Maintain 4000.

ATIS ★
115.2 273.5

APP CON ★
126.075 239.25 (N)
134.55 350.3 (SE)
135.6 323.275 (SW)

TOWER ★
126.65 379.925

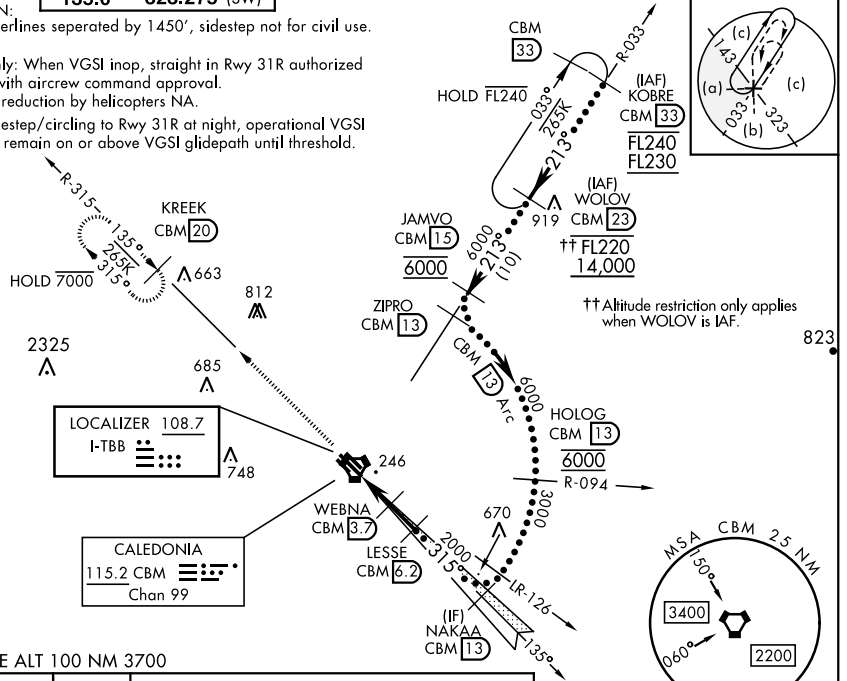
GND CON ★
121.9 275.8

CLNC DEL ★
269.55

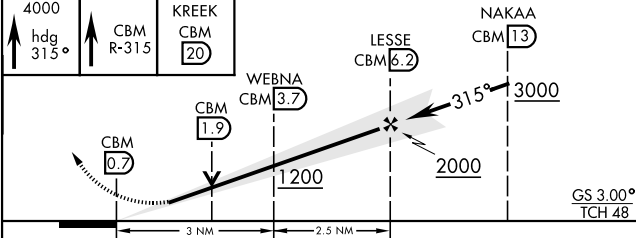
*** CAUTION:
Rwy centerlines separated by 1450', sidestep not for civil use.

USAF Only: When VGSI inop, straight in Rwy 31R authorized at night with aircrew command approval. Visibility reduction by helicopters NA.

When sidestep/circling to Rwy 31R at night, operational VGSI required, remain on or above VGSI glidepath until threshold.

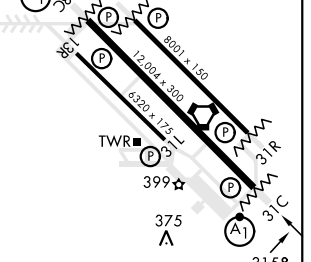


EMERG SAFE ALT 100 NM 3700



CATEGORY	C	D	E
S-ILS 31C*	413/24	200	(200-1/2)
S-LOC 31C**	640/40	427	(500-3/4)
SIDESTEP *** RWY 31R	640-1 1/4	422	(500-1/4)
CIRCLING	740-1 1/2 522 (600-1 1/2)	880-2 662 (700-2)	1240-3 1022 (1100-3)
LOCAL ALTIMETER, WITHOUT LAST STEPDOWN FIX			
S-LOC 31C †	720/55	507	(600-1)
SIDESTEP *** RWY 31R	760-1 1/8	542	(600-1/8)
CIRCLING	760-1 1/8 542 (600-1 1/8)	880-2 662 (700-2)	1240-3 1022 (1100-3)

ELEV	218	TDZE 31C	213
		TDZE 31R	218



MIRL Rwy 13R-31L					
MIRL Rwy 13C-31C, 13L-31R					
FAF to MAP 5.5 NM					
Knots	120	140	160	180	200
Min:Sec	2:45	2:21	2:04	1:50	1:39

COLUMBUS, MISSISSIPPI

33°39'N-88°27'W

COLUMBUS AFB (KCBM)

HI-ILS or LOC Z RWY 31C

SC-4, 28 NOV 2024 to 26 DEC 2024

SC-4, 28 NOV 2024 to 26 DEC 2024

Amdt 2 21APR22