

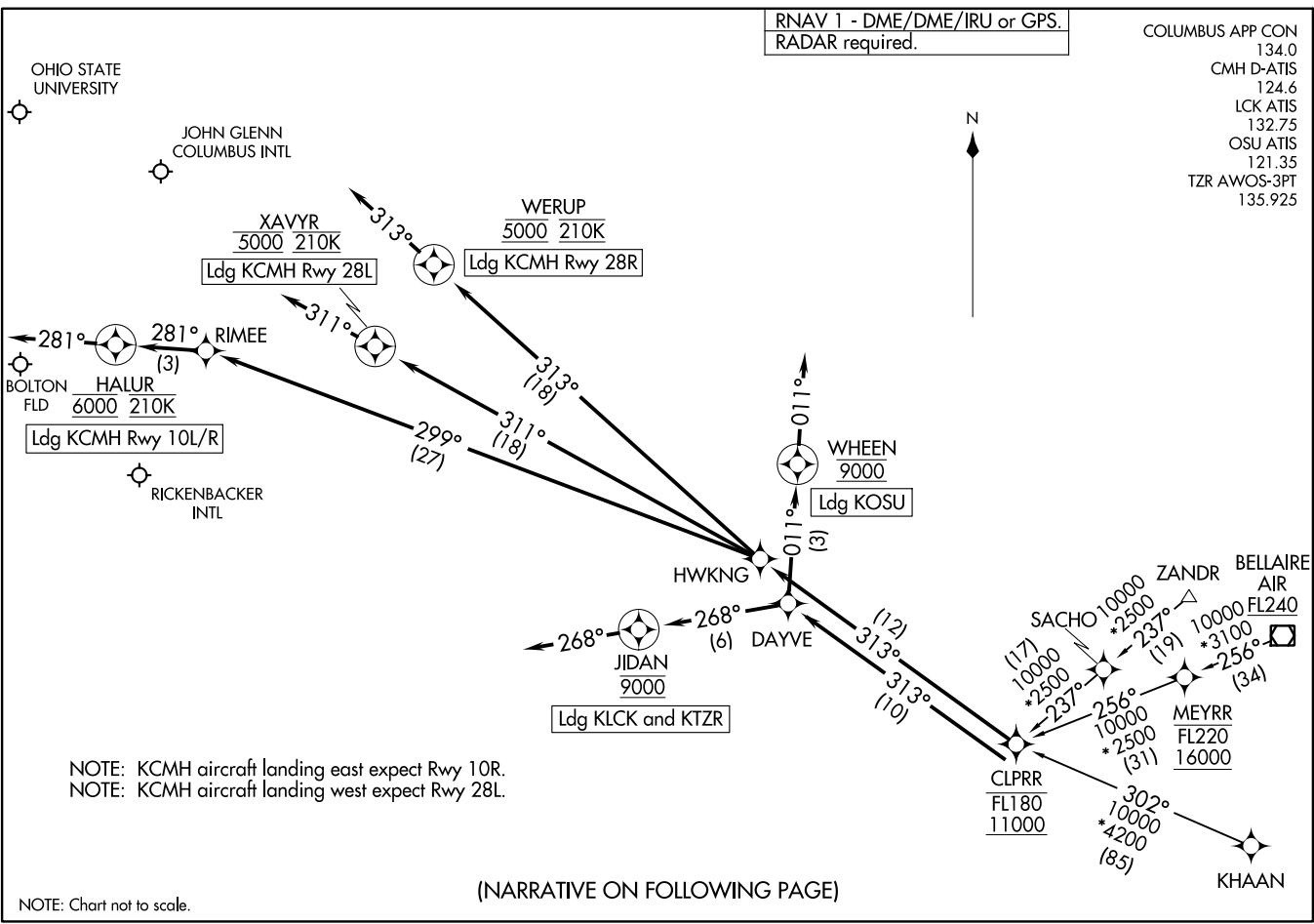
RNAV 1 - DME/DME/IRU or GPS.  
RADAR required.

- COLUMBUS APP CON 134.0
- CMH D-ATIS 124.6
- LCK ATIS 132.75
- OSU ATIS 121.35
- TZR AWOS-3PT 135.925

(CLPRR, CLPRR2) 231.66  
CLPRR TWO ARRIVAL (RNAV)

AL-94 (FAA)

COLUMBUS, OHIO



(NARRATIVE ON FOLLOWING PAGE)

NOTE: Chart not to scale.

CLPRR TWO ARRIVAL (RNAV)  
(CLPRR, CLPRR2) 231.66  
23FEB23

COLUMBUS, OHIO

ARRIVAL ROUTE DESCRIPTION

BELLAIRE TRANSITION (AIR.CLPRR2)

KHAAN TRANSITION (KHAAN.CLPRR2)

ZANDR TRANSITION (ZANDR.CLPRR2)

KCMH: From CLPRR on track 313° to HWKNG.

LANDING KCMH RUNWAY 10L/R: From HWKNG on track 299° to RIMEE, then on track 281° to cross HALUR at 6000 and at 210K, then on track 281°. Expect RADAR vectors to final approach course.

LANDING KCMH RUNWAY 28L: From HWKNG on track 311° to cross XAVYR at 5000 and at 210K, then on track 311°. Expect RADAR vectors to ILS or LOC Rwy 28L approach.

LANDING KCMH RUNWAY 28R: From HWKNG on track 313° to cross WERUP at 5000 and at 210K, then on track 313°. Expect RADAR vectors ILS or LOC Rwy 28R approach.

LANDING KTZR/KLCK: From CLPRR on track 313° to DAYVE, then on track 268° to cross JIDAN at 9000, then on track 268°. Expect RADAR vectors to final approach course.

LANDING KOSU: From CLPRR on track 313° to DAYVE, then on track 011° to cross WHEEN at 9000, then on track 011°. Expect RADAR vectors to final approach course.

EC-2, 28 NOV 2024 to 26 DEC 2024

EC-2, 28 NOV 2024 to 26 DEC 2024