

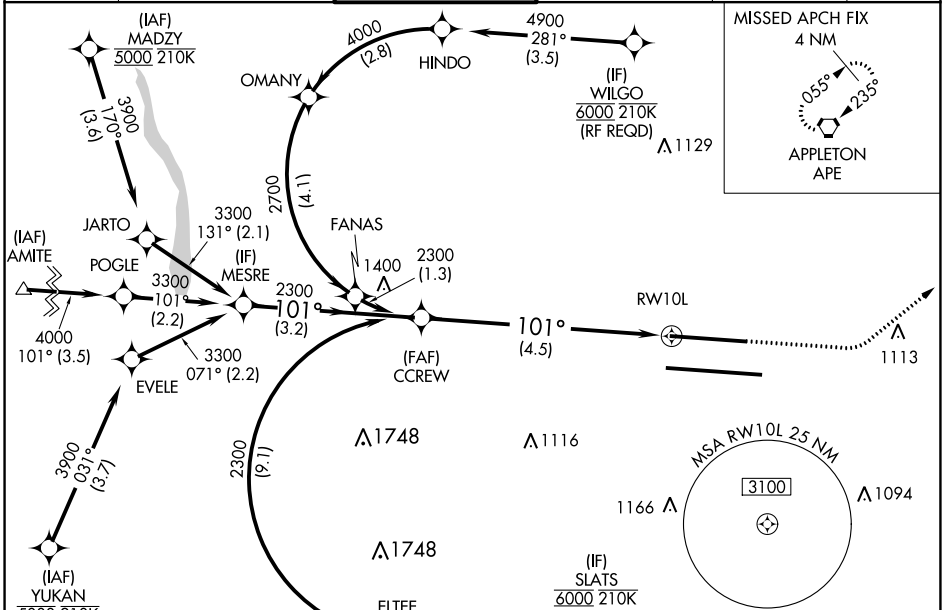
APP CRS	Rwy Idg	<b>8000</b>
<b>101°</b>	TDZE	<b>815</b>
	Apt Elev	<b>815</b>

# RNAV (RNP) Z RWY 10L

JOHN GLENN COLUMBUS INTL (CMH)

RNP AR APCH.	MALSR 	MISSED APPROACH: Climb to 1400 then climbing left turn to 3000 direct APE VORTAC and hold.
<p>Simultaneous approach authorized. For uncompensated Baro-VNAV systems, procedure NA below -19°C or above 54°C. For inop ALS, increase RNP 0.30 all Cats visibility to RVR 6000.</p>		

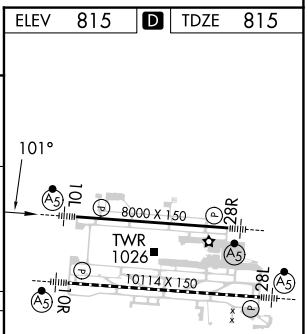
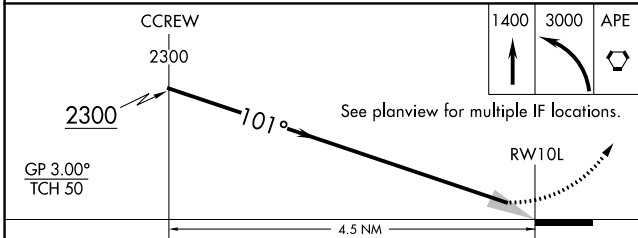
D-ATIS	COLUMBUS APP CON	COLUMBUS TOWER	GND CON	CLNC DEL	CPDLC
<b>124.6</b>	<b>125.95 371.975</b>	<b>132.7 257.8</b>	<b>121.9 348.6</b>	<b>126.3</b>	



EC-2, 28 NOV 2024 to 26 DEC 2024

EC-2, 28 NOV 2024 to 26 DEC 2024

ELEV	<b>815</b>	<b>D</b>	TDZE	<b>815</b>
------	------------	----------	------	------------



CATEGORY	A	B	C	D
RNP 0.13 DA		1148/26	333 (400- $\frac{5}{6}$ )	
RNP 0.26 DA		1198/35	383 (400- $\frac{3}{4}$ )	
RNP 0.30 DA		1216/40	401 (500- $\frac{3}{4}$ )	

## AUTHORIZATION REQUIRED

TDZ/CL Rwy 10R-28L  
HIRL Rwy 10R-28L and 10L-28R