

# RNAV (RNP) Z RWY 28L

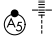
JOHN GLENN COLUMBUS INTL (CMH)

APP CRS	Rwy Idg	<b>10113</b>
<b>281°</b>	TDZE	<b>815</b>
	Apt Elev	<b>815</b>

**RNP AR APCH.**

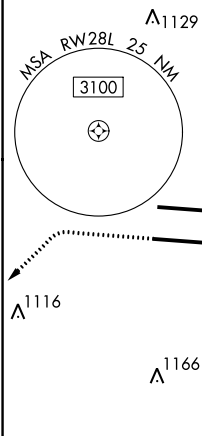
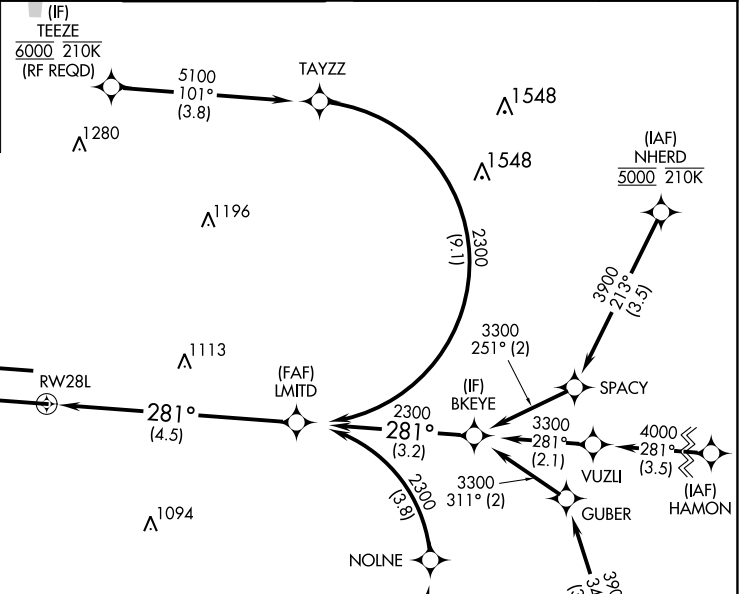
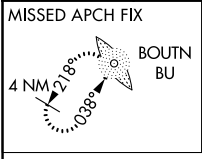
**▼** For uncompensated Baro-VNAV systems, procedure NA below -19°C or above 54°C. For inop ALS, increase RNP 0.30 all Cats visibility to 1 3/8 SM. Simultaneous approach authorized.

**MALSRR**

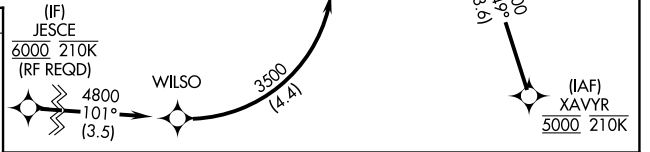
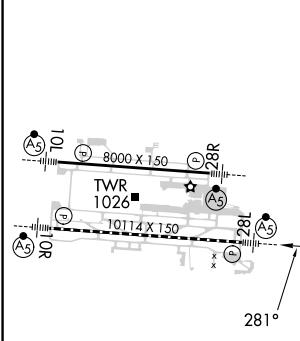


**MISSED APPROACH:**  
Climb to 1400 then climbing left turn to 3000 direct BOUTN LOM and hold.

D-ATIS	COLUMBUS APP CON	COLUMBUS TOWER	GND CON	CLNC DEL	CPDLC
<b>124.6</b>	<b>125.95 371.975</b>	<b>132.7 257.8</b>	<b>121.9 348.6</b>	<b>126.3</b>	

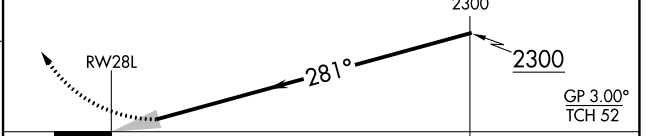


ELEV 815	<b>D</b>	TDZE 815
----------	----------	----------



VGSI and RNAV glidepath not coincident (VGSI Angle 3.00° / TCH 68).

LMITD See planview for multiple IF locations.



CATEGORY	A	B	C	D
RNP 0.17 DA		1147/26	332 (400-1/2)	
RNP 0.30 DA		1314/50	499 (500-1)	

TDZ/CL Rwy 10R-28L  
HIRL Rwy 10R-28L and 10L-28R

COLUMBUS, OHIO  
Amdt 2A 24MAR22

40°00'N-82°54'W

JOHN GLENN COLUMBUS INTL (CMH)  
**RNAV (RNP) Z RWY 28L**

**AUTHORIZATION REQUIRED**

EC-2, 28 NOV 2024 to 26 DEC 2024

EC-2, 28 NOV 2024 to 26 DEC 2024