

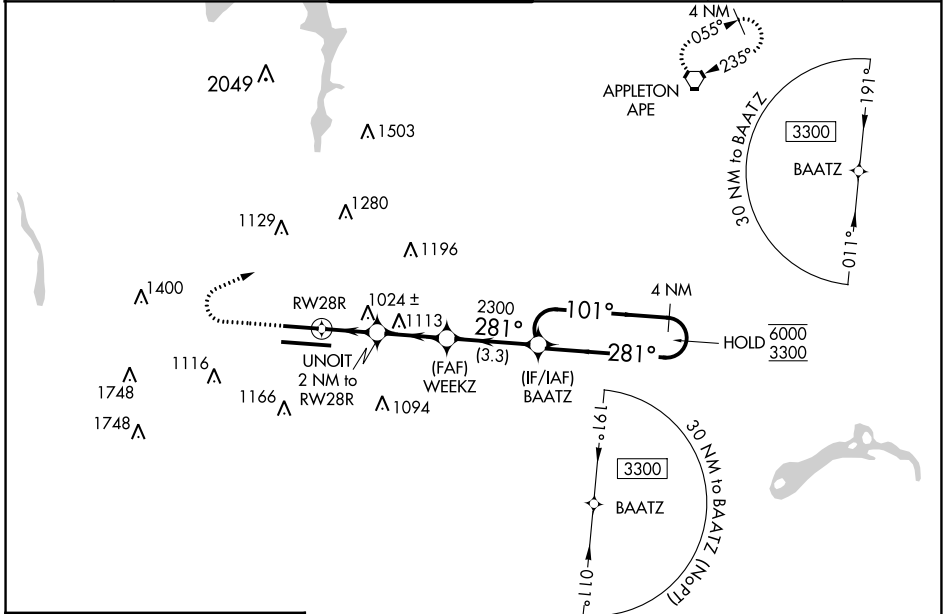
WAAS CH <b>86619</b> <b>W28B</b>	APP CRS <b>281°</b>	Rwy Idg TDZE Apt Elev	<b>8000</b> <b>813</b> <b>815</b>
--	------------------------	-----------------------------	---

# RNAV (GPS) Y RWY 28R

JOHN GLENN COLUMBUS INTL (CMH)

RNP APCH. ▼ Simultaneous approach authorized. For uncompensated Baro-VNAV systems, LNAV/VNAV NA below -19°C or above 54°C. LNAV procedure NA during simultaneous operations. ▲ Use of FD or AP providing RNAV track guidance required during simultaneous operations. For inop ALS, increase LNAV/VNAV all Cats visibility or RVR 4500; increase LNAV Cat C/D visibility to 1 3/8 SM. #RVR 1800 authorized with use of FD or AP or HUD to DA.	MALSR 	MISSED APPROACH: Climb to 1400 then climbing right turn to 3000 direct APE VORTAC and hold.
--	-----------	---

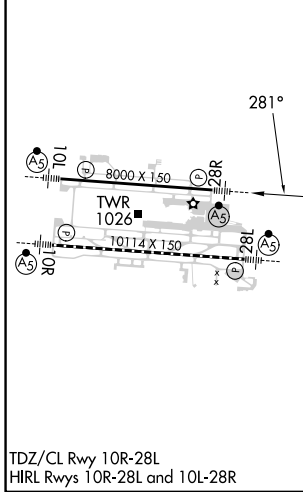
D-ATIS <b>124.6</b>	COLUMBUS APP CON <b>125.95 371.975</b>	COLUMBUS TOWER <b>132.7 257.8</b>	GND CON <b>121.9 348.6</b>	CLNC DEL <b>126.3</b>	CPDLC
------------------------	---	--------------------------------------	-------------------------------	--------------------------	-------



EC-2, 28 NOV 2024 to 26 DEC 2024

EC-2, 28 NOV 2024 to 26 DEC 2024

ELEV 815	<b>D</b>	TDZE 813
----------	----------	----------



1400	3000	APE	4 NM	BAATZ	Holding Pattern
*LNAV only.		UNOIT 2 NM to RW28R	WEEKZ 2300	101°	6000
RW28R		*1.3 NM to RW28R	281°	281°	3300
1480*		2300	281°	2300	GP 3.00°
1.3 NM		0.7 NM	2.5 NM	3.3 NM	TCH 50
CATEGORY	A	B	C	D	
LPV DA #	1013/24 200 (200-1/2)				
LNAV/VNAV DA	1096/24 283 (300-1/2)				
LNAV MDA	1280/24	467 (500-1/2)	1280/50	467 (500-1)	
<b>C</b> CIRCLING	1340-1	525 (600-1)	1520-2 705 (800-2)	1520-2 1/4 705 (800-2 1/4)	